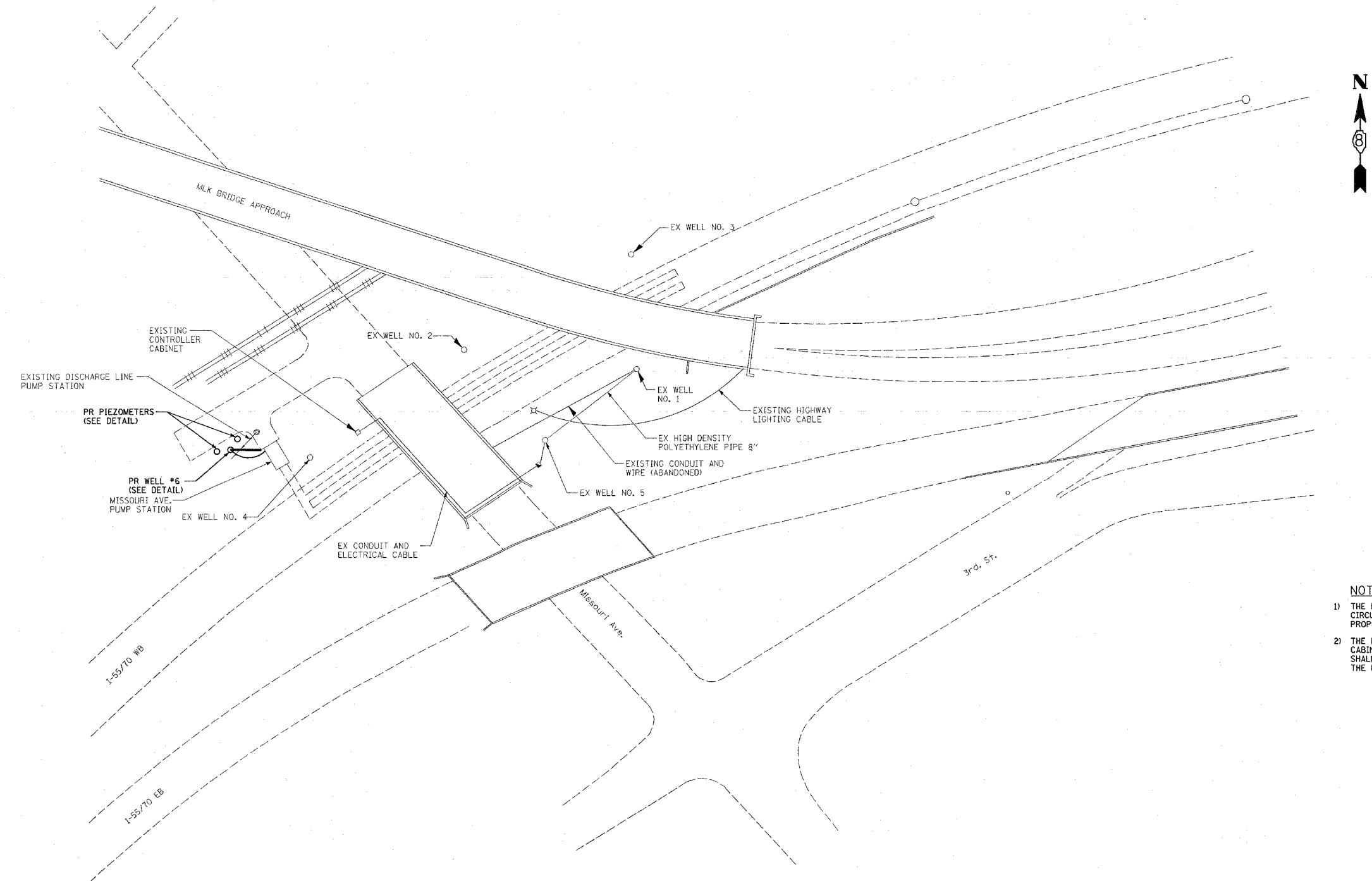


FAP ROUTE	SECTION	COUNTY	TOTAL SHEETS	SHEET NO
*	**	ST. CLAIR	8	4
STA. TO STA.				
CONTRACT NO.: 76889				

- * VARIOUS
- ** DIST 8 DEEP WELLS 2005-2

PLAN	DATE
SURVEYED	BY
ALIGNED	CHECKED
NOTE BOOK	NO.
CADD FILE NAME	



NOTES

- 1) THE ENGINEER SHALL IDENTIFY SOURCE OF EXISTING ELECTRICAL CIRCUIT FOR SHUT OFF PRIOR TO THE CONNECTION OF THE PROPOSED CIRCUIT.
- 2) THE PROPOSED CONNECTION THE EXISTING CONTROLLER CABINET AND PROPOSED STAINLESS STEEL WELL HEAD SHALL BE APPROVED BY THE ENGINEER AND INCLUDED IN THE PRICE OF ELECTRICAL CABLE IN CONDUIT.

REVISIONS	
NAME	DATE

ILLINOIS DEPARTMENT OF TRANSPORTATION
SITE PLAN
MISSOURI WELLS
 VARIOUS ROUTES
 SECTION DIST 8 DEEP WELLS 2005-2
 ST. CLAIR COUNTY

DRAWN BY:

PLOT DATE: 3/31/2005

#D:\IT\8
 3/31/2005
 c:\pro\p\cta\ed02705\plan\plan02705.dgn
 *REF-
 *REF-