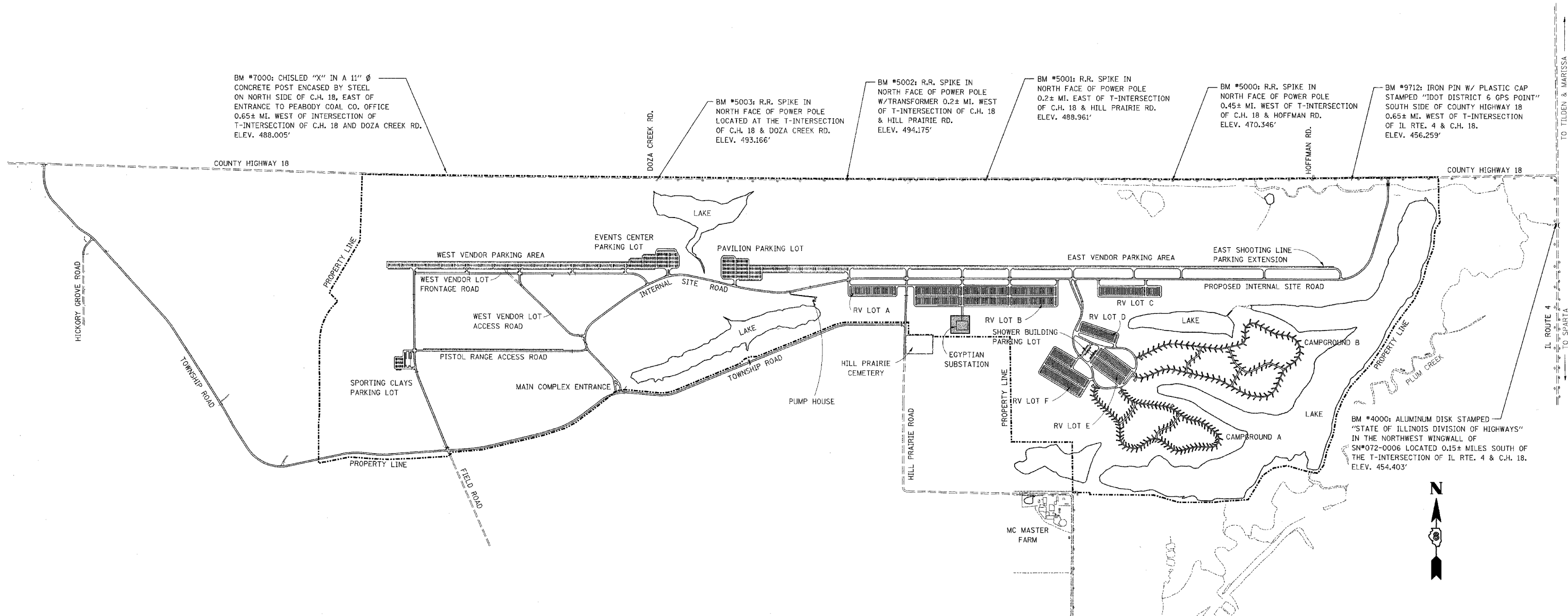


F&P RTE.	SECTION	COUNTY	TOTAL SITS	S&T NO.
PARK ROADS	DIST. 8 WSC 2006-1	RANDOLPH	45	3
STA.	TO STA.			

CONTRACT NO. 76972



BM #7000: CHISELED "X" IN A 11" Ø CONCRETE POST ENCASED BY STEEL ON NORTH SIDE OF C.H. 18, EAST OF ENTRANCE TO PEABODY COAL CO. OFFICE 0.65± MI. WEST OF INTERSECTION OF T-INTERSECTION OF C.H. 18 AND DOZA CREEK RD. ELEV. 488.005'

BM #5003: R.R. SPIKE IN NORTH FACE OF POWER POLE LOCATED AT THE T-INTERSECTION OF C.H. 18 & DOZA CREEK RD. ELEV. 493.166'

BM #5002: R.R. SPIKE IN NORTH FACE OF POWER POLE W/TRANSFORMER 0.2± MI. WEST OF T-INTERSECTION OF C.H. 18 & HILL PRAIRIE RD. ELEV. 494.175'

BM #5001: R.R. SPIKE IN NORTH FACE OF POWER POLE 0.2± MI. EAST OF T-INTERSECTION OF C.H. 18 & HILL PRAIRIE RD. ELEV. 488.961'

BM #5000: R.R. SPIKE IN NORTH FACE OF POWER POLE 0.45± MI. WEST OF T-INTERSECTION OF C.H. 18 & HOFFMAN RD. ELEV. 470.346'

BM #9712: IRON PIN W/ PLASTIC CAP STAMPED "IDOT DISTRICT 6 GPS POINT" SOUTH SIDE OF COUNTY HIGHWAY 18 0.65± MI. WEST OF T-INTERSECTION OF IL RTE. 4 & C.H. 18. ELEV. 456.259'

BM #4000: ALUMINUM DISK STAMPED "STATE OF ILLINOIS DIVISION OF HIGHWAYS" IN THE NORTHWEST WINGWALL OF SN#072-0006 LOCATED 0.15± MILES SOUTH OF THE T-INTERSECTION OF IL RTE. 4 & C.H. 18. ELEV. 454.403'



ILLINOIS DEPARTMENT OF TRANSPORTATION
**WORLD SHOOTING COMPLEX
 PHASE III - SITE LAYOUT
 AND BENCHMARKS**
 PARK ROADS
 SECTION DIST. 8 WSC 2006-1
 RANDOLPH COUNTY
 DRAWN BY: