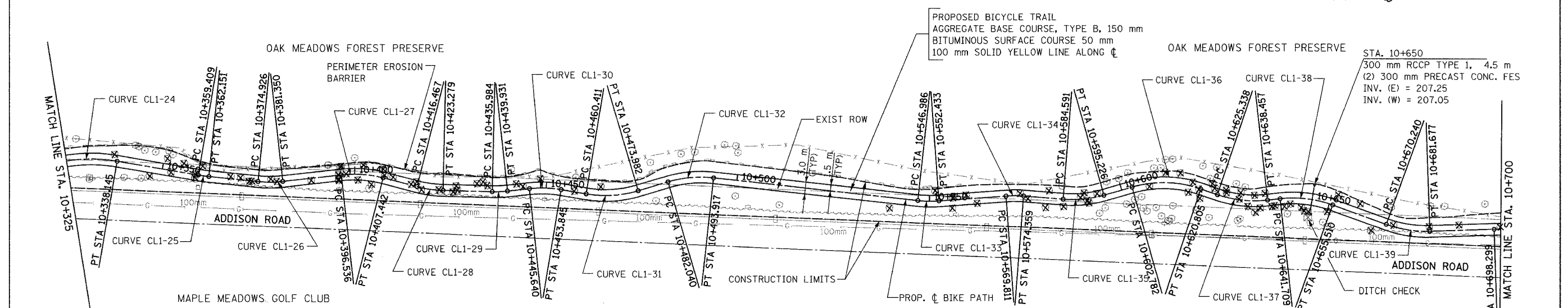
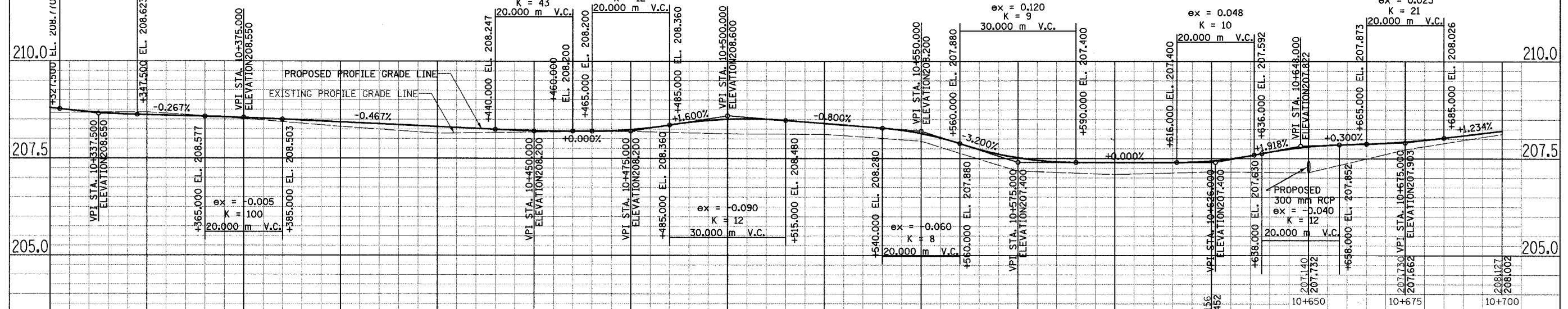


PROP. CURVE CL1-25 PI STA = 10+360.780 N = 50,479.119 E = 5,019.518 Δ = 3° 55' 40" (LT) R = 40.000 m T = 1.372 m L = 2.742 m E = 0.024 m	PROP. CURVE CL1-26 PI STA = 10+378.150 N = 50,461.838 E = 5,017.757 Δ = 12° 16' 07" (LT) R = 30.000 m T = 3.224 m L = 6.424 m E = 0.173 m	PROP. CURVE CL1-28 PI STA = 10+419.887 N = 50,420.668 E = 5,015.987 Δ = 13° 00' 35" (LT) R = 30.000 m T = 3.421 m L = 6.812 m E = 0.194 m	PROP. CURVE CL1-29 PI STA = 10+437.960 N = 50,402.571 E = 5,015.555 Δ = 7° 32' 13" (LT) R = 30.000 m T = 1.976 m L = 3.946 m E = 0.065 m	PROP. CURVE CL1-31 PI STA = 10+467.314 N = 50,373.470 E = 5,013.920 Δ = 25° 55' 11" (LT) R = 30.000 m T = 6.904 m L = 13.572 m E = 0.784 m	PROP. CURVE CL1-33 PI STA = 10+549.717 N = 50,291.897 E = 5,013.106 Δ = 10° 24' 09" (LT) R = 30.000 m T = 2.731 m L = 5.447 m E = 0.124 m	PROP. CURVE CL1-35 PI STA = 10+589.965 N = 50,251.741 E = 5,013.304 Δ = 20° 18' 39" (LT) R = 30.000 m T = 5.374 m L = 10.635 m E = 0.477 m	PROP. CURVE CL1-37 PI STA = 10+632.004 N = 50,210.939 E = 5,012.785 Δ = 25° 03' 14" (LT) R = 30.000 m T = 6.666 m L = 13.118 m E = 0.732 m	PROP. CURVE CL1-39 PI STA = 10+676.029 N = 50,168.213 E = 5,005.267 Δ = 21° 50' 34" (LT) R = 30.000 m T = 5.789 m L = 11.437 m E = 0.553 m
---	--	--	---	---	--	---	---	---

SECTION	COUNTY	TOTAL SHEETS	SHEET NO.
02-00090-00-BT	DUPAGE	117	17
STA. TO STA.			
IDOT PROJECT NO. M-8003(222)			
SALT CREEK GREENWAY TRAIL			
CONTRACT NO. 83713			



PROP. CURVE CL1-24 PI STA = 10+330.317 N = 50,509.352 E = 5,024.710 Δ = 22° 43' 46" (RT) R = 40.000 m T = 8.040 m L = 15.868 m E = 0.800 m	PROP. CURVE CL1-27 PI STA = 10+402.050 N = 50,438.065 E = 5,020.446 Δ = 20° 49' 42" (RT) R = 30.000 m T = 5.514 m L = 10.906 m E = 0.502 m	PROP. CURVE CL1-30 PI STA = 10+449.768 N = 50,390.826 E = 5,016.825 Δ = 15° 40' 12" (RT) R = 30.000 m T = 4.128 m L = 8.205 m E = 0.283 m	PROP. CURVE CL1-32 PI STA = 10+488.057 N = 50,353.346 E = 5,019.851 Δ = 22° 41' 02" (RT) R = 30.000 m T = 6.017 m L = 11.877 m E = 0.598 m	PROP. CURVE CL1-34 PI STA = 10+572.009 N = 50,269.569 E = 5,014.722 Δ = 8° 41' 11" (RT) R = 30.000 m T = 2.278 m L = 4.548 m E = 0.086 m	PROP. CURVE CL1-35 PI STA = 10+589.965 N = 50,251.741 E = 5,013.304 Δ = 20° 18' 39" (LT) R = 30.000 m T = 5.374 m L = 10.635 m E = 0.477 m	PROP. CURVE CL1-36 PI STA = 10+612.075 N = 50,230.354 E = 5,019.341 Δ = 34° 25' 21" (RT) R = 30.000 m T = 9.293 m L = 18.024 m E = 1.406 m	PROP. CURVE CL1-38 PI STA = 10+648.734 N = 50,194.102 E = 5,014.672 Δ = 26° 21' 32" (RT) R = 30.000 m T = 7.025 m L = 13.801 m E = 0.812 m
---	---	--	---	---	---	---	---



208.676 208.600	208.688 208.617	208.520 208.545	208.317 208.433	208.143 208.317	208.178 208.212	208.194 208.240	208.130 208.510	208.121 208.400	207.942 208.140	207.178 207.520	207.089 207.400
10+325	10+350	10+375	10+400	10+425	10+450	10+475	10+500	10+525	10+550	10+575	10+600

REVISIONS		
NO.	NAME	DATE

URS
1701 GOLF ROAD, SUITE 1000 TEL (847) 228-0707
ROLLING MEADOWS, IL 60008 FAX (847) 228-1115

VILLAGE OF ADDISON
**SALT CREEK GREENWAY TRAIL
PLAN & PROFILE
STA. 10+325 TO STA. 10+700**

DATE: 7/18/05
DESIGNED BY: MIA
DRAWN BY: MIA&VAP
CHECKED BY: DDL