

SECTION	COUNTY	TOTAL SHEETS	SHEET NO.
02-00090-00-BT	DUPAGE	117	18
STA. TO STA.			
IDOT PROJECT NO. M-8003(222)			
SALT CREEK GREENWAY TRAIL			
CONTRACT NO. 83713			

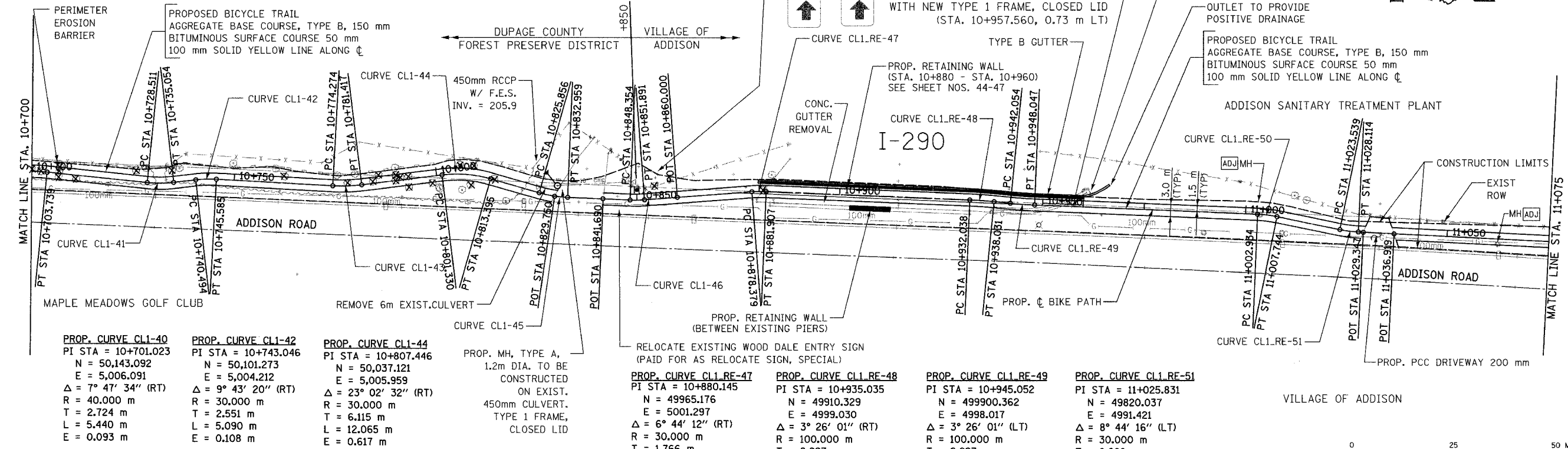
PROP. CURVE CL1-41
 PI STA = 10+731.796
 N = 50,112.475
 E = 5,002.919
 $\Delta = 12^\circ 29' 44''$ (LT)
 R = 30.000 m
 T = 3.284 m
 L = 6.543 m
 E = 0.179 m

PROP. CURVE CL1-43
 PI STA = 10+777.855
 N = 50,066.504
 E = 5,002.304
 $\Delta = 10^\circ 13' 55''$ (LT)
 R = 40.000 m
 T = 3.581 m
 L = 7.143 m
 E = 0.160 m

PROP. CURVE CL1-45
 PI STA = 10+829.424
 N = 50,015.830
 E = 4,999.874
 $\Delta = 13^\circ 33' 53''$ (LT)
 R = 30.000 m
 T = 3.568 m
 L = 7.102 m
 E = 0.211 m

PROP. CURVE CL1-46
 PI STA = 10+850.125
 N = 49,995.114
 E = 4,999.010
 $\Delta = 6^\circ 45' 20''$ (LT)
 R = 30.000 m
 T = 1.771 m
 L = 3.537 m
 E = 0.052 m

PROP. CURVE CL1.RE-50
 PI STA = 11+005.344
 N = 49840.119
 E = 4995.527
 $\Delta = 9^\circ 11' 09''$ (RT)
 R = 30.000 m
 T = 2.410 m
 L = 4.810 m
 E = 0.097 m



PROP. CURVE CL1-40
 PI STA = 10+701.023
 N = 50,143.092
 E = 5,006.091
 $\Delta = 7^\circ 47' 34''$ (RT)
 R = 40.000 m
 T = 2.724 m
 L = 5.440 m
 E = 0.093 m

PROP. CURVE CL1-42
 PI STA = 10+743.046
 N = 50,101.273
 E = 5,004.212
 $\Delta = 9^\circ 43' 20''$ (RT)
 R = 30.000 m
 T = 2.551 m
 L = 5.090 m
 E = 0.108 m

PROP. CURVE CL1-44
 PI STA = 10+807.446
 N = 50,037.121
 E = 5,005.959
 $\Delta = 23^\circ 02' 32''$ (RT)
 R = 30.000 m
 T = 6.115 m
 L = 12.065 m
 E = 0.617 m

PROP. MH, TYPE A,
 1.2m DIA. TO BE
 CONSTRUCTED
 ON EXIST.
 450mm CULVERT,
 TYPE 1 FRAME,
 CLOSED LID

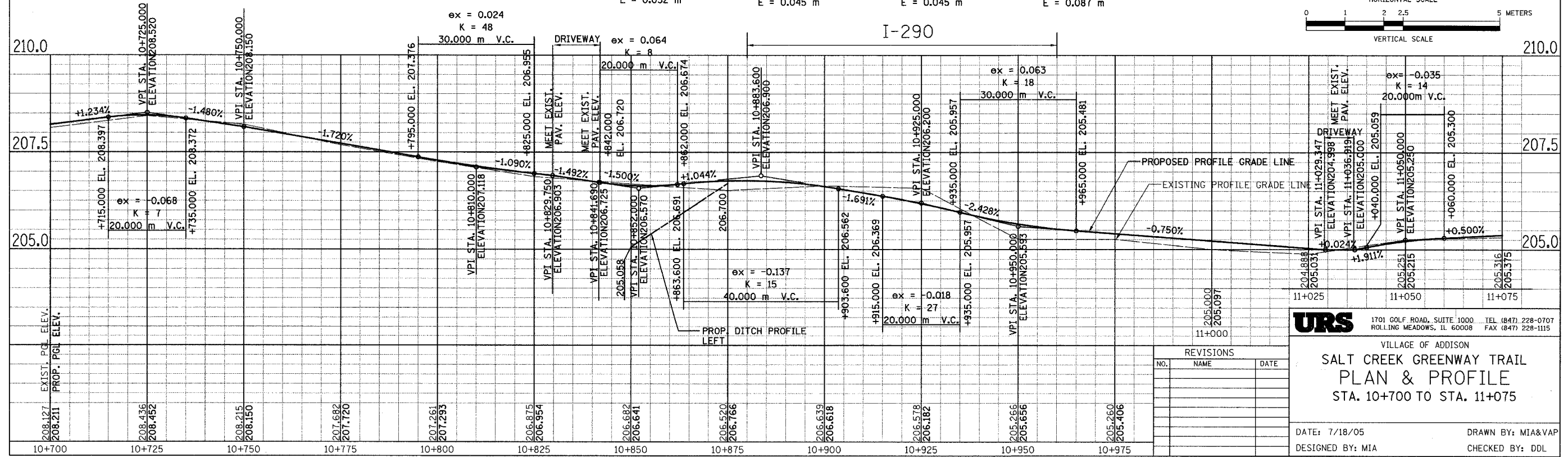
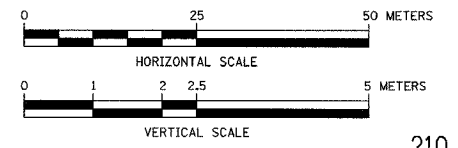
PROP. CURVE CL1.RE-47
 PI STA = 10+880.145
 N = 49965.176
 E = 5001.297
 $\Delta = 6^\circ 44' 12''$ (RT)
 R = 30.000 m
 T = 1.766 m
 L = 3.527 m
 E = 0.052 m

PROP. CURVE CL1.RE-48
 PI STA = 10+935.035
 N = 49910.329
 E = 4999.030
 $\Delta = 3^\circ 26' 01''$ (RT)
 R = 100.000 m
 T = 2.997 m
 L = 5.993 m
 E = 0.045 m

PROP. CURVE CL1.RE-49
 PI STA = 10+945.052
 N = 499900.362
 E = 4998.017
 $\Delta = 3^\circ 26' 01''$ (LT)
 R = 100.000 m
 T = 2.997 m
 L = 5.993 m
 E = 0.045 m

PROP. CURVE CL1.RE-51
 PI STA = 11+025.831
 N = 49820.037
 E = 4991.421
 $\Delta = 8^\circ 44' 16''$ (LT)
 R = 30.000 m
 T = 2.292 m
 L = 4.575 m
 E = 0.087 m

FOR LEGEND SEE SHEET NO. 14



URS
 1701 GOLF ROAD, SUITE 1000 TEL (847) 228-0707
 ROLLING MEADOWS, IL 60008 FAX (847) 228-1115

VILLAGE OF ADDISON
SALT CREEK GREENWAY TRAIL
PLAN & PROFILE
 STA. 10+700 TO STA. 11+075

REVISIONS	
NO.	DATE

DATE: 7/18/05
 DESIGNED BY: MIA
 DRAWN BY: MIA&VAP
 CHECKED BY: DDL