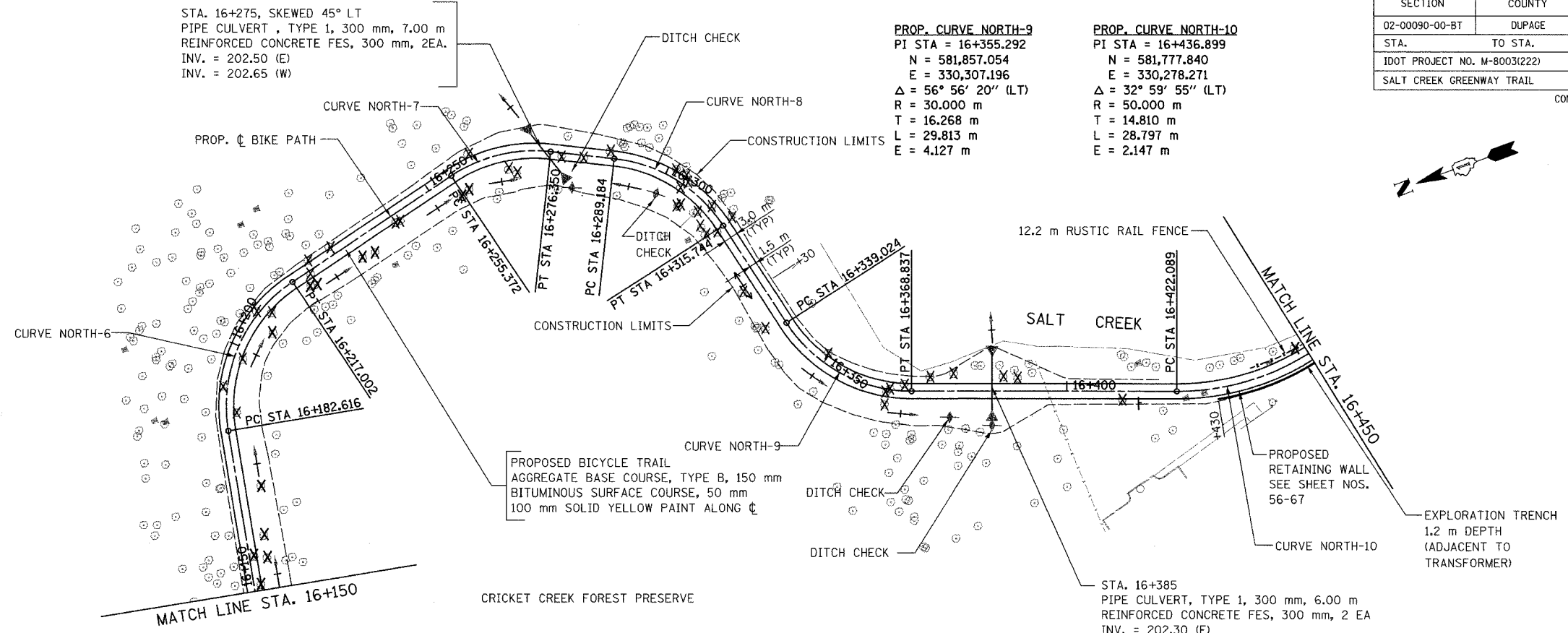


|                              |        |              |           |
|------------------------------|--------|--------------|-----------|
| SECTION                      | COUNTY | TOTAL SHEETS | SHEET NO. |
| 02-00090-00-BT               | DUPAGE | 117          | 31        |
| STA. TO STA.                 |        |              |           |
| IDOT PROJECT NO. M-8003(222) |        |              |           |
| SALT CREEK GREENWAY TRAIL    |        |              |           |
| CONTRACT NO. 83713           |        |              |           |



STA. 16+275, SKEWED 45° LT  
 PIPE CULVERT, TYPE 1, 300 mm, 7.00 m  
 REINFORCED CONCRETE FES, 300 mm, 2EA.  
 INV. = 202.50 (E)  
 INV. = 202.65 (W)

**PROP. CURVE NORTH-9**  
 PI STA = 16+355.292  
 N = 581,857.054  
 E = 330,307.196  
 $\Delta = 56^\circ 56' 20''$  (LT)  
 R = 30.000 m  
 T = 16.268 m  
 L = 29.813 m  
 E = 4.127 m

**PROP. CURVE NORTH-10**  
 PI STA = 16+436.899  
 N = 581,777.840  
 E = 330,278.271  
 $\Delta = 32^\circ 59' 55''$  (LT)  
 R = 50.000 m  
 T = 14.810 m  
 L = 28.797 m  
 E = 2.147 m

**PROPOSED BICYCLE TRAIL**  
 AGGREGATE BASE COURSE, TYPE B, 150 mm  
 BITUMINOUS SURFACE COURSE, 50 mm  
 100 mm SOLID YELLOW PAINT ALONG  $\phi$

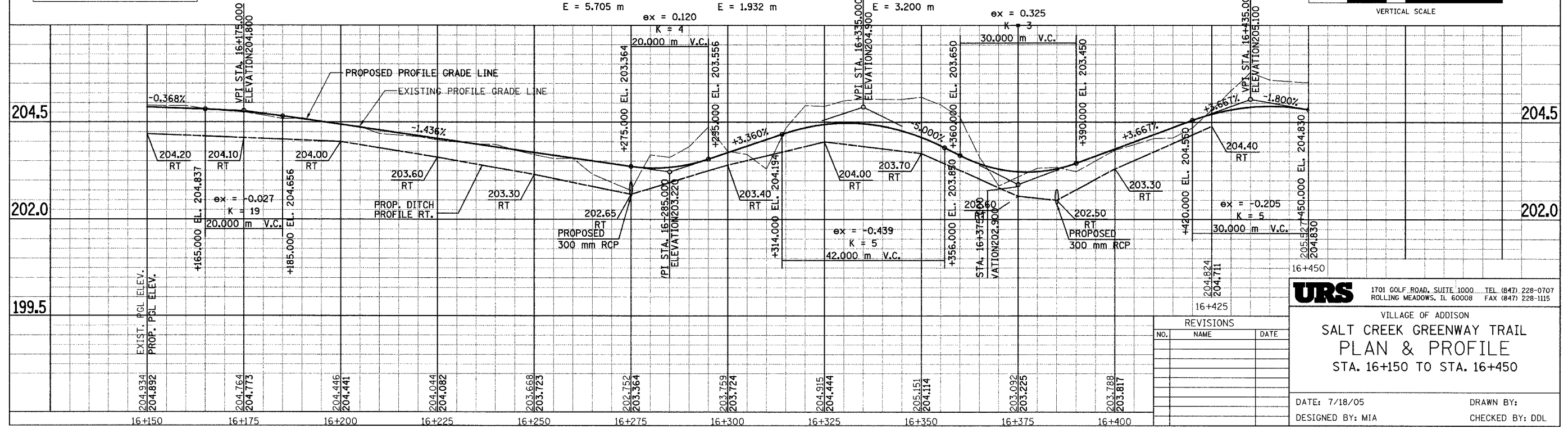
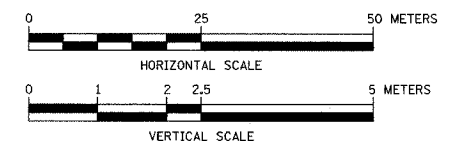
**PROP. CURVE NORTH-6**  
 PI STA = 16+201.977  
 N = 581,969.909  
 E = 330,360.030  
 $\Delta = 65^\circ 40' 22''$  (RT)  
 R = 30.000 m  
 T = 19.361 m  
 L = 34.386 m  
 E = 5.705 m

**PROP. CURVE NORTH-7**  
 PI STA = 16+266.310  
 N = 581,903.221  
 E = 330,376.403  
 $\Delta = 40^\circ 03' 58''$  (RT)  
 R = 30.000 m  
 T = 10.939 m  
 L = 20.979 m  
 E = 1.932 m

**PROP. CURVE NORTH-8**  
 PI STA = 16+303.405  
 N = 581,869.151  
 E = 330,359.586  
 $\Delta = 50^\circ 43' 35''$  (RT)  
 R = 30.000 m  
 T = 14.221 m  
 L = 26.560 m  
 E = 3.200 m

STA. 16+385  
 PIPE CULVERT, TYPE 1, 300 mm, 6.00 m  
 REINFORCED CONCRETE FES, 300 mm, 2 EA  
 INV. = 202.30 (E)  
 INV. = 202.50 (W)

FOR LEGEND SEE SHEET NO. 30



**URS** 1701 GOLF ROAD, SUITE 1000 TEL (847) 228-0707  
 ROLLING MEADOWS, IL 60008 FAX (847) 228-1115

VILLAGE OF ADDISON  
**SALT CREEK GREENWAY TRAIL**  
**PLAN & PROFILE**  
 STA. 16+150 TO STA. 16+450

DATE: 7/18/05  
 DESIGNED BY: MIA  
 DRAWN BY:  
 CHECKED BY: DDL

| REVISIONS |      |      |
|-----------|------|------|
| NO.       | NAME | DATE |
|           |      |      |
|           |      |      |
|           |      |      |
|           |      |      |