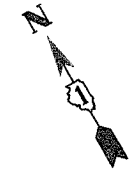


SECTION	COUNTY	TOTAL SHEETS	SHEET NO.
02-00090-00-BT	DUPAGE	117	35
STA. TO STA.			
IDOT PROJECT NO. M-8003(222)			
SALT CREEK GREENWAY TRAIL			

CONTRACT NO. 83713



SIGN PANELS TYPE 1 WITH ALUMINUM SIGN POST, SPECIAL (SEE DETAIL)



3 ACER X FREEMANII AUTUMN BLAZE (8 m O.C.)

12.2 m RUSTIC RAIL FENCE

PROPOSED BICYCLE TRAIL  
AGGREGATE BASE COURSE, TYPE B, 100 mm  
PCC SIDEWALK 150 mm  
100 mm SOLID YELLOW LINE ALONG  $\phi$

SIGN PANELS TYPE 1 WITH ALUMINUM SIGN POST, SPECIAL (SEE DETAIL)



3 ACER X FREEMANII AUTUMN BLAZE (8 m O.C.)

END BIT. PATH  
BEGIN P.C.C. PATH

SIGN PANELS TYPE 1 MOUNTED ON SIGNAL POST (SEE DETAIL)



EXISTING PAVER BRICKS

REMOVE EXISTING SHRUBS (INCIDENTAL TO CLEARING)  
EXISTING SIDEWALK TO BE REMOVED

WOOD DALE ROAD

SALT CREEK

PROPOSED PAVER BRICKS BETWEEN PROPOSED TRAIL AND EXISTING PAVER BRICKS (MATCH EXISTING PATTERN)

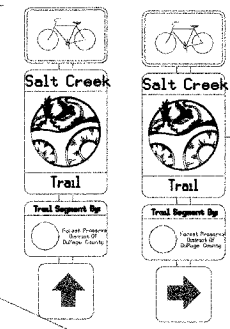
34 COTONEASTER APICULATIS (CRANBERRY COTONEASTER) AT 1 m O.C.

ROUTE TRAIL AROUND EXISTING LIGHT

12.2 m RUSTIC RAIL FENCE

3 QUERCUS MACROCARPA (8 m O.C.)

(2) SIGN PANELS TYPE 1 WITH (1) ALUMINUM SIGN POST, SPECIAL (SEE DETAIL)



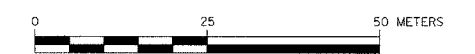
BEGIN P.C.C. PATH

SIGN PANELS TYPE 1 MOUNTED ON SIGNAL POST (SEE DETAIL)



LAKE STREET

VILLA AVENUE



**URS**  
HORIZONTAL SCALE  
1701 GOLF ROAD, SUITE 1000 TEL (847) 228-0707  
ROLLING MEADOWS, IL 60008 FAX (847) 228-1115

VILLAGE OF ADDISON  
SALT CREEK GREENWAY TRAIL

LANDSCAPE PLAN

DATE: 10/22/04  
DESIGNED BY: MIA  
DRAWN BY: MIA&VP  
CHECKED BY: DDL

REVISIONS		
NO.	NAME	DATE