

NOTES FOR TEMPORARY TRAFFIC SIGNALS

1. ALL CONTROL EQUIPMENT FOR THE TEMPORARY TRAFFIC SIGNAL(S) SHALL BE FURNISHED BY THE CONTRACTOR UNLESS OTHERWISE STATED IN THE PLANS. ON PROJECTS WITH MULTIPLE TEMPORARY TRAFFIC SIGNAL INSTALLATIONS, ALL CONTROLLERS SHALL BE THE SAME MANUFACTURER BRAND AND MODEL NUMBER WITH CURRENT SOFTWARE INSTALLED.
2. ALL CONTROLLERS USED FOR TEMPORARY TRAFFIC SIGNALS SHALL BE FULLY ACTUATED NEMA MICROPROCESSOR BASED INSTALLED IN CABINETS WITH 8 PHASE BACK PANELS, CAPABLE OF SUPPLYING 255 SECONDS OF CYCLE LENGTH AND INDIVIDUAL PHASE LENGTH AND INDIVIDUAL PHASE LENGTH SETTINGS UP TO 99 SECONDS. ON PROJECTS WITH ONE LANE OPEN AND TWO WAY TRAFFIC FLOW, SUCH AS BRIDGE DECK REPAIRS, THE TEMPORARY SIGNAL CONTROLLER SHALL BE CAPABLE OF PROVIDING ADJUSTABLE ALL RED CLEARANCE SETTINGS OF UP TO 30 SECONDS IN LENGTH.
3. ALL CONTROLLERS USED FOR TEMPORARY TRAFFIC SIGNALS SHALL MEET OR EXCEED THE REQUIREMENTS OF SECTION 857 OF THE "STANDARD SPECIFICATIONS FOR ROAD AND BRIDGE CONSTRUCTION" AND THE TRAFFIC SIGNAL SPECIAL PROVISIONS WITH REGARDS TO INTERNAL TIME BASE COORDINATION, PREEMPTION AND TESTING.
4. ALL TRAFFIC SIGNAL SECTIONS AND PEDESTRIAN SIGNAL SECTIONS SHALL BE OF THE 300mm (12") TYPE. THE TEMPORARY TRAFFIC SIGNAL HEADS SHALL BE PLACED AS INDICATED ON THE TEMPORARY TRAFFIC SIGNAL PLAN OR AS DIRECTED BY THE ENGINEER. THE CONTRACTOR SHALL FURNISH ENOUGH CABLE SLACK TO RELOCATE HEADS TO ANY POSITION ON THE SPAN WIRE OR AT LOCATIONS ILLUSTRATED ON THE PLANS FOR CONSTRUCTION STAGING. THE TEMPORARY TRAFFIC SIGNAL SHALL REMAIN IN OPERATION DURING ALL SIGNAL HEAD RELOCATIONS. EACH TEMPORARY TRAFFIC SIGNAL HEAD SHALL HAVE ITS OWN CABLE FROM THE CONTROLLER CABINET TO THE SIGNAL HEAD.

5. THE EXISTING TRAFFIC SIGNAL SYSTEM INTERCONNECTS SHALL BE MAINTAINED AS A PART OF THE TEMPORARY TRAFFIC SIGNAL INSTALLATION AS SHOWN ON THE PLANS OR DIRECTED BY THE ENGINEER.
6. ALL EXISTING STREET NAME AND INTERSECTION REGULATORY SIGNS SHALL BE REMOVED FROM EXISTING POLES, RELOCATED, AND SECURELY FASTENED TO THE SIGNAL SPAN WIRE.
7. MAINTAIN THE LEFT TURN PHASES DURING THE CONSTRUCTION.
8. TEMPORARY POLES SHALL BE PLACED OUT OF THE CONSTRUCTION AREA, SIDEWALKS, ETC.

STATION EQUATIONS  
 STA. 79+95.00 U.S. RTE. 14 =  
 STA. 60+00.00 AHEAD McHENRY AVE.  
 STA. 79+94.86 U.S. RTE. 14 =  
 STA. 50+00.00 BACK McHENRY AVE.  
 STA. 50+00 BACK McHENRY AVE. =  
 STA. 60+01.23 AHEAD McHENRY AVE.

1 EACH REMOVE EXISTING TRAFFIC SIGNAL EQUIPMENT

THE FOLLOWING EXISTING TRAFFIC SIGNAL EQUIPMENT SHALL BE REMOVED BY THE CONTRACTOR AND SHALL REMAIN THE PROPERTY OF THE AGENCY LISTED BELOW. THE CONTRACTOR SHALL SAFELY STORE AND ARRANGE FOR PICK UP OF ALL EQUIPMENT TO BE RETURNED TO THE LISTED AGENCY AS PER THE TRAFFIC SIGNAL SPECIFICATIONS.

AGENCY: CITY OF CRYSTAL LAKE

- 2 EACH 1-FACE, PEDESTRIAN SIGNAL HEADS
- 2 EACH PEDESTRIAN PUSH BUTTONS
- 2 EACH STEEL MAST ARM AND POLE ASSEMBLY
- 2 EACH 1-FACE, 3 - SECTION SIGNAL HEADS
- 2 EACH 1-FACE, 5 - SECTION SIGNAL HEADS

THE FOLLOWING ITEMS SHALL BE REMOVED BY THE CONTRACTOR AND SHALL BE DISPOSED OF BY THEM OUTSIDE THE RIGHT-OF-WAY AT THEIR EXPENSE. THE SALVAGE VALUE OF THE REMOVED EQUIPMENT SHALL BE REFLECTED IN THE CONTRACT BID PRICE.

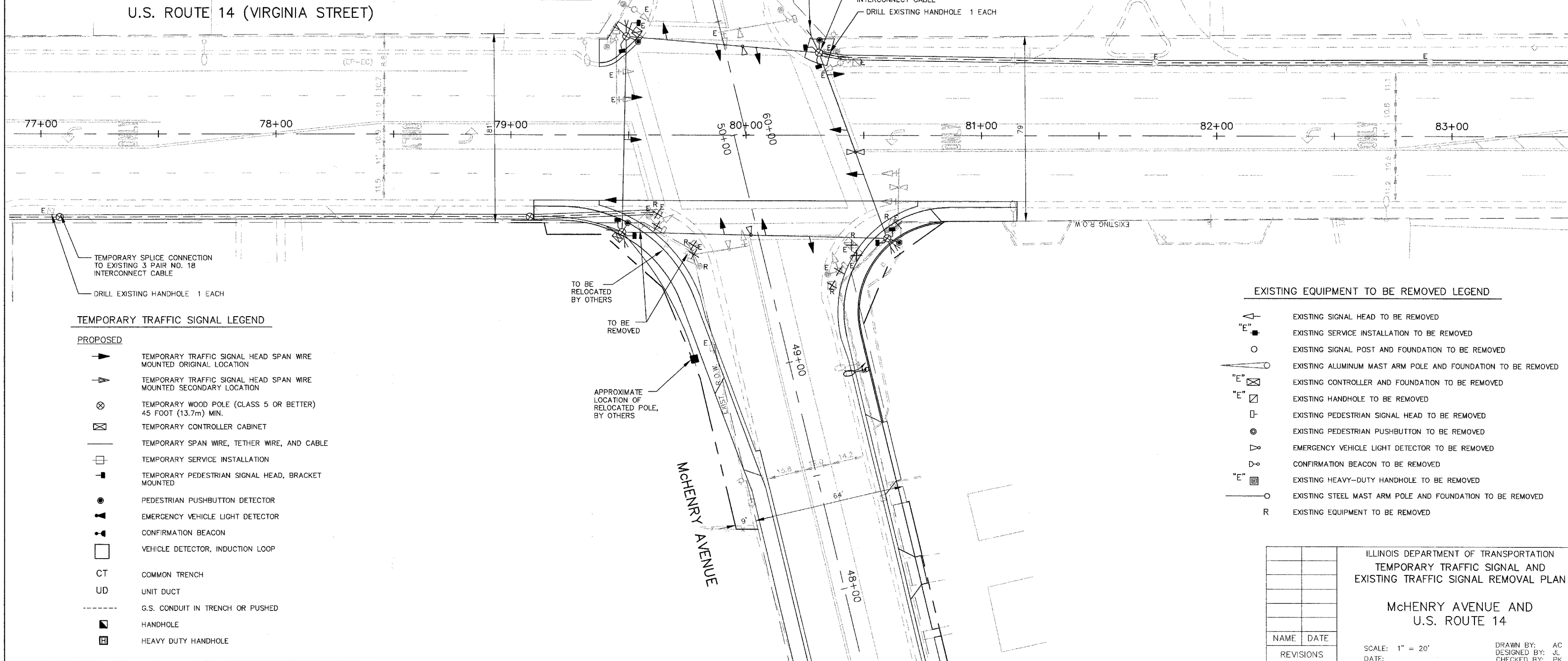
1 EACH SERVICE INSTALLATION

F.A.U. ROUTE	SECTION	COUNTY	TOTAL SHEETS
120	00-00097-00-CH	MCHENRY	28
TRAFFIC SIGNALS			NO. 12
F.H.W.A. REG. 5 ILLINOIS PROJECT NO. F-0305(02)			

83725

CONSTRUCTION NOTES

1. REMOVE THE EXISTING INTERCONNECT CABLE, THE APPROXIMATE LENGTH IS 2,345 FEET FROM THE McHENRY AVE. CONTROLLER TO THE DOLE AVE. CONTROLLER ALONG U.S. ROUTE 14. SEE SHEET NO. 13, 16 & 17 FOR DETAILS.
2. REMOVE THE EXISTING INTERCONNECT CABLE, THE APPROXIMATE LENGTH IS 2,268 FEET FROM THE McHENRY AVE. CONTROLLER TO THE KEITH AVE. CONTROLLER ALONG U.S. ROUTE 14. SEE SHEET NO. 13, 16 & 17 FOR DETAILS.
3. EXISTING TRAFFIC SIGNAL CABINET AND CONTROLLER TO BE RELOCATED.
4. RELOCATE EXISTING LIGHT DETECTOR
5. BAG ALL EXISTING SIGNAL HEADS THAT ARE TO REMAIN IN PLACE.



TEMPORARY TRAFFIC SIGNAL LEGEND

- PROPOSED
- ▶ TEMPORARY TRAFFIC SIGNAL HEAD SPAN WIRE MOUNTED ORIGINAL LOCATION
  - ◀ TEMPORARY TRAFFIC SIGNAL HEAD SPAN WIRE MOUNTED SECONDARY LOCATION
  - ⊗ TEMPORARY WOOD POLE (CLASS 5 OR BETTER) 45 FOOT (13.7m) MIN.
  - ⊠ TEMPORARY CONTROLLER CABINET
  - TEMPORARY SPAN WIRE, TETHER WIRE, AND CABLE
  - TEMPORARY SERVICE INSTALLATION
  - TEMPORARY PEDESTRIAN SIGNAL HEAD, BRACKET MOUNTED
  - PEDESTRIAN PUSHBUTTON DETECTOR
  - ▲ EMERGENCY VEHICLE LIGHT DETECTOR
  - CONFIRMATION BEACON
  - VEHICLE DETECTOR, INDUCTION LOOP
  - CT COMMON TRENCH
  - UD UNIT DUCT
  - G.S. CONDUIT IN TRENCH OR PUSHED
  - HANDHOLE
  - ⊠ HEAVY DUTY HANDHOLE

EXISTING EQUIPMENT TO BE REMOVED LEGEND

- ▲ EXISTING SIGNAL HEAD TO BE REMOVED
- "E" EXISTING SERVICE INSTALLATION TO BE REMOVED
- EXISTING SIGNAL POST AND FOUNDATION TO BE REMOVED
- EXISTING ALUMINUM MAST ARM POLE AND FOUNDATION TO BE REMOVED
- ⊠ "E" EXISTING CONTROLLER AND FOUNDATION TO BE REMOVED
- ⊠ "E" EXISTING HANDHOLE TO BE REMOVED
- EXISTING PEDESTRIAN SIGNAL HEAD TO BE REMOVED
- EXISTING PEDESTRIAN PUSHBUTTON TO BE REMOVED
- ▲ EXISTING EMERGENCY VEHICLE LIGHT DETECTOR TO BE REMOVED
- EXISTING CONFIRMATION BEACON TO BE REMOVED
- ⊠ "E" EXISTING HEAVY-DUTY HANDHOLE TO BE REMOVED
- EXISTING STEEL MAST ARM POLE AND FOUNDATION TO BE REMOVED
- R EXISTING EQUIPMENT TO BE REMOVED

ILLINOIS DEPARTMENT OF TRANSPORTATION	
TEMPORARY TRAFFIC SIGNAL AND EXISTING TRAFFIC SIGNAL REMOVAL PLAN	
McHENRY AVENUE AND U.S. ROUTE 14	
NAME	DATE
REVISIONS	
SCALE: 1" = 20'	
DATE:	
DRAWN BY: AC	
DESIGNED BY: JL	
CHECKED BY: PK	