

F.A.U.	SECTION	COUNTY	TOTAL SHEETS	SHEET NO.
2832	00-00218-00-PP	COOK	108	10
STA		TO STA		
FED. ROAD DIST. NO. 7		ILLINOIS		FED. AID PROJECT

CONTRACT NO. 83773

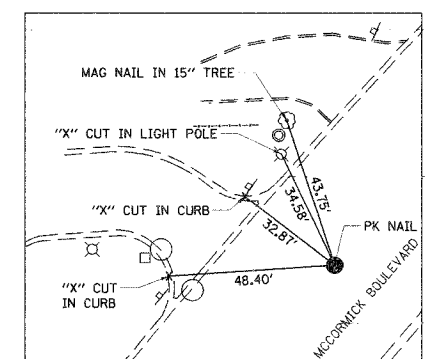
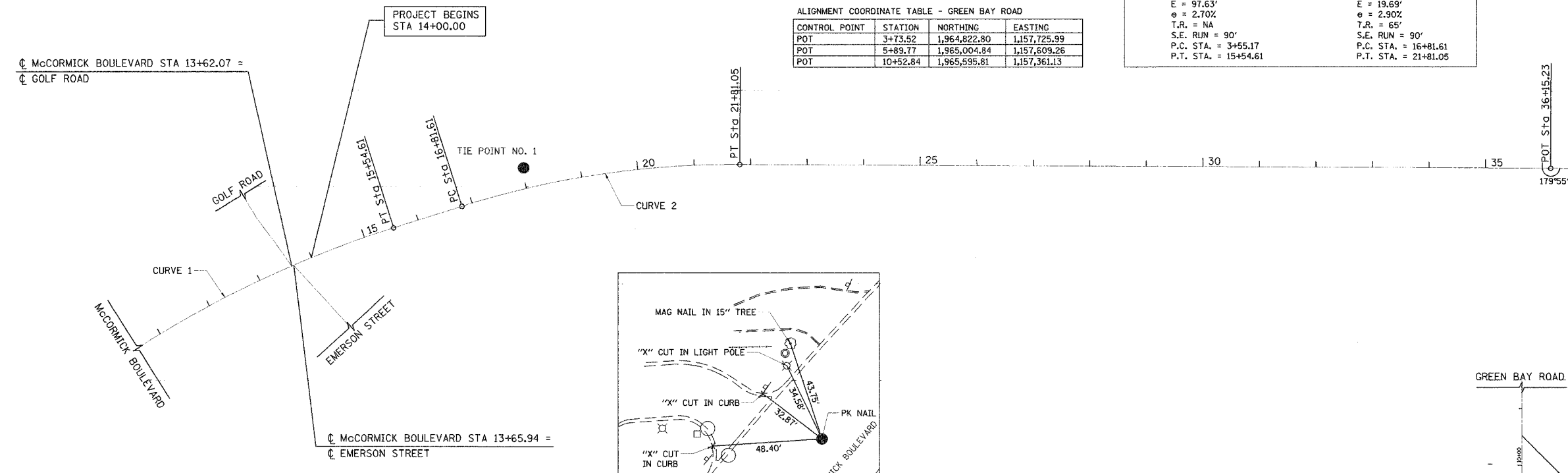
ALIGNMENT COORDINATE TABLE - McCORMICK BOULEVARD

CONTROL POINT	STATION	NORTHING	EASTING
POC	14+00.00	1,962,368.50	1,153,773.13
PT-1	15+54.61	1,962,490.73	1,153,867.73
PC-2	16+81.61	1,962,587.95	1,153,949.45
PT-2	21+81.05	1,962,914.36	1,154,324.79
POT	36+15.23	1,963,675.82	1,155,540.13
POT	43+15.66	1,964,046.87	1,156,134.21
POT	60+74.50	1,965,004.84	1,157,609.26

ALIGNMENT COORDINATE TABLE - GREEN BAY ROAD

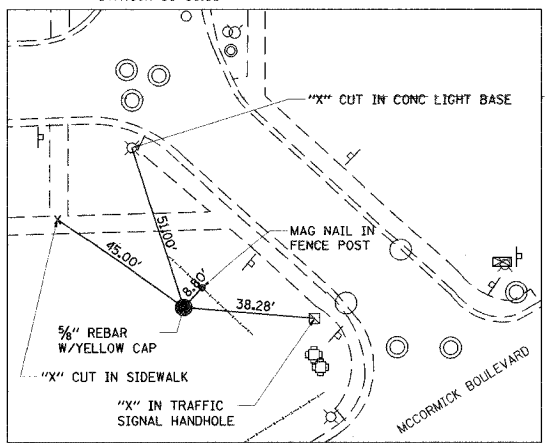
CONTROL POINT	STATION	NORTHING	EASTING
POT	3+73.52	1,964,822.80	1,157,725.99
POT	5+89.77	1,965,004.84	1,157,609.26
POT	10+52.84	1,965,595.81	1,157,361.13

PROPOSED CONSTRUCTION McCORMICK BOULEVARD CURVE 1	PROPOSED CONSTRUCTION McCORMICK BOULEVARD CURVE 2
PI STA. = 9+75.19	PI STA. = 19+33.38
$\Delta = 35^\circ 47' 35''$ (RT)	$\Delta = 17^\circ 53' 06''$ (RT)
D = 2° 59' 03"	D = 3° 34' 52"
R = 1,920.00'	R = 1,600.00'
T = 620.02'	T = 251.77'
L = 1,199.44'	L = 499.44'
E = 97.63'	E = 19.63'
$\theta = 2.70\%$	$\theta = 2.90\%$
T.R. = NA	T.R. = 65'
S.E. RUN = 90'	S.E. RUN = 90'
P.C. STA. = 3+55.17	P.C. STA. = 16+81.61
P.T. STA. = 15+54.61	P.T. STA. = 21+81.05



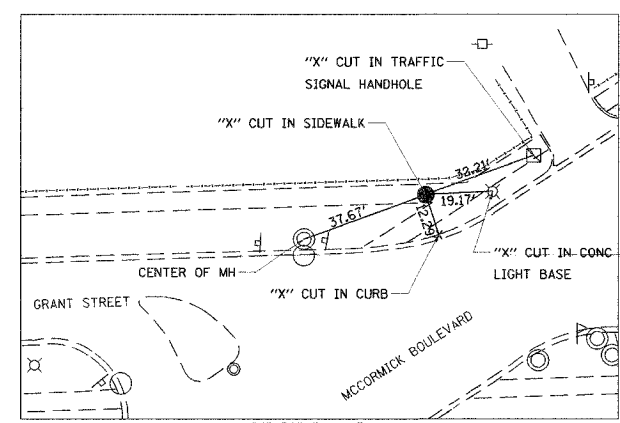
TIE POINT NO. 1  
NORTHING 1962564.98  
EASTING 1153927.74  
ELEVATION 600.20  
STATION 16+50.06

TIE POINT NO. 2  
NORTHING 1963873.48  
EASTING 1155716.99  
ELEVATION 598.45  
STATION 38+69.35



BENCHMARKS					
NAME	STATION	OFFSET	NORTHING	EASTING	ELEVATION
BM1			1962294.24	1153786.14	600.80
BM2			1964933.52	1157607.96	600.94
CP1			1961371.46	1153423.33	598.99
CP2			1961901.11	1153528.12	599.34
CP3	13+35.28	43.60' RT	1962291.08	1153772.86	600.32
CP10	21+88.41	34.93' RT	1962888.66	1154349.57	601.56
CP11	25+10.82	29.14' RT	1963064.76	1154619.71	600.45
CP12	29+42.23	23.34' RT	1963298.72	1154982.21	599.46
CP13	34+61.89	29.96' LT	1963619.79	1155394.28	599.01
CP15	38+96.57	156.61' LT	1963957.68	1155695.79	599.51
CP16			1963994.04	1156004.59	600.07
CP17			1963548.29	1156067.29	600.64
CP18			1964104.82	1156825.34	599.64
CP19	48+27.32	23.89' LT	1964345.58	1156550.29	598.48
CP20	51+24.22	23.41' LT	1964467.62	1156825.05	599.17
CP21	54+71.84	44.14' RT	1964639.57	1157127.87	601.09
CP23			1964925.79	1157624.42	601.25
CP27			1964455.99	1157922.81	598.87

MCCORMICK BLVD DATUM (USGS) = 579.90 FEET ABOVE EVANSTON DATUM



TIE POINT NO. 3  
NORTHING 1964877.10  
EASTING 1157347.55  
ELEVATION 599.08  
STATION 57+85.43

PROJECT ENDS  
STA 60+32.05  
END RECONSTRUCTION

REVISIONS	
NAME	DATE

ILLINOIS DEPARTMENT OF TRANSPORTATION  
**ALIGNMENT, TIES, AND BENCH MARKS**  
McCORMICK BOULEVARD  
DATE 9/03/04  
DRAWN BY GEW  
CHECKED BY PAS  
SCALE: 1"=100'