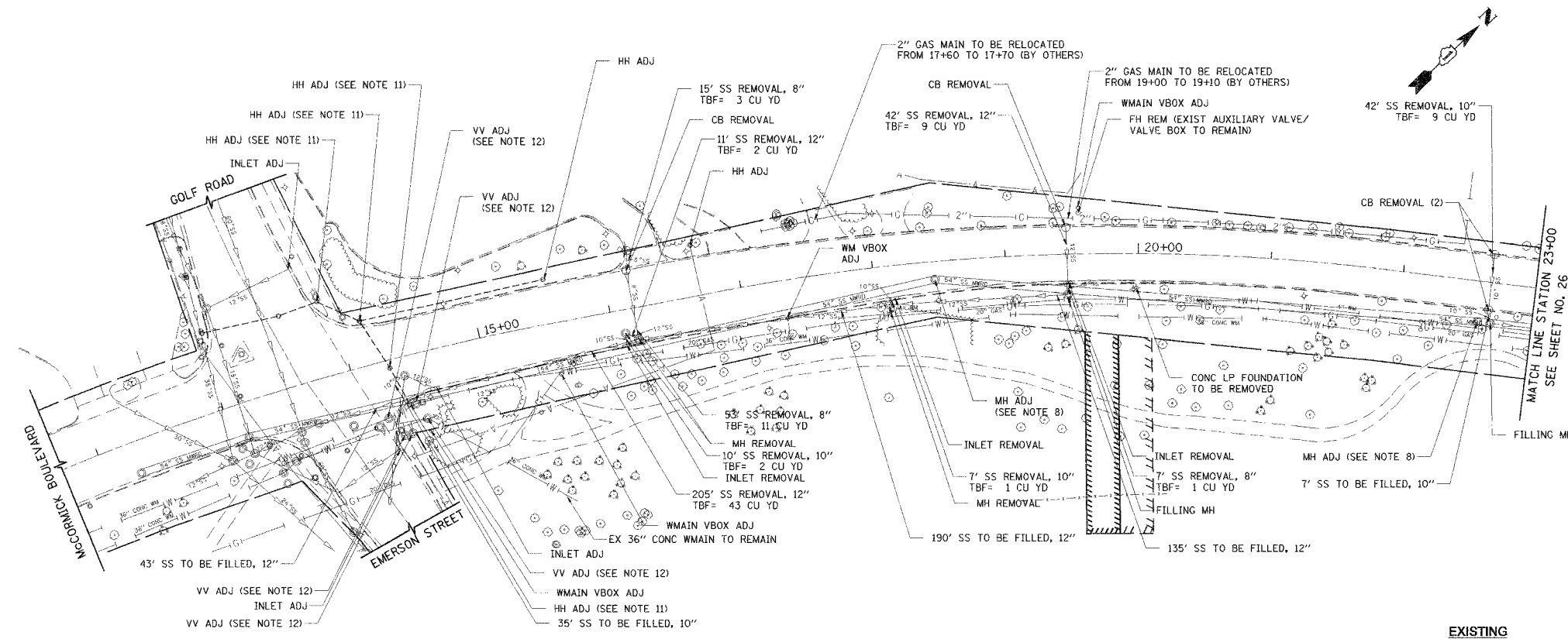
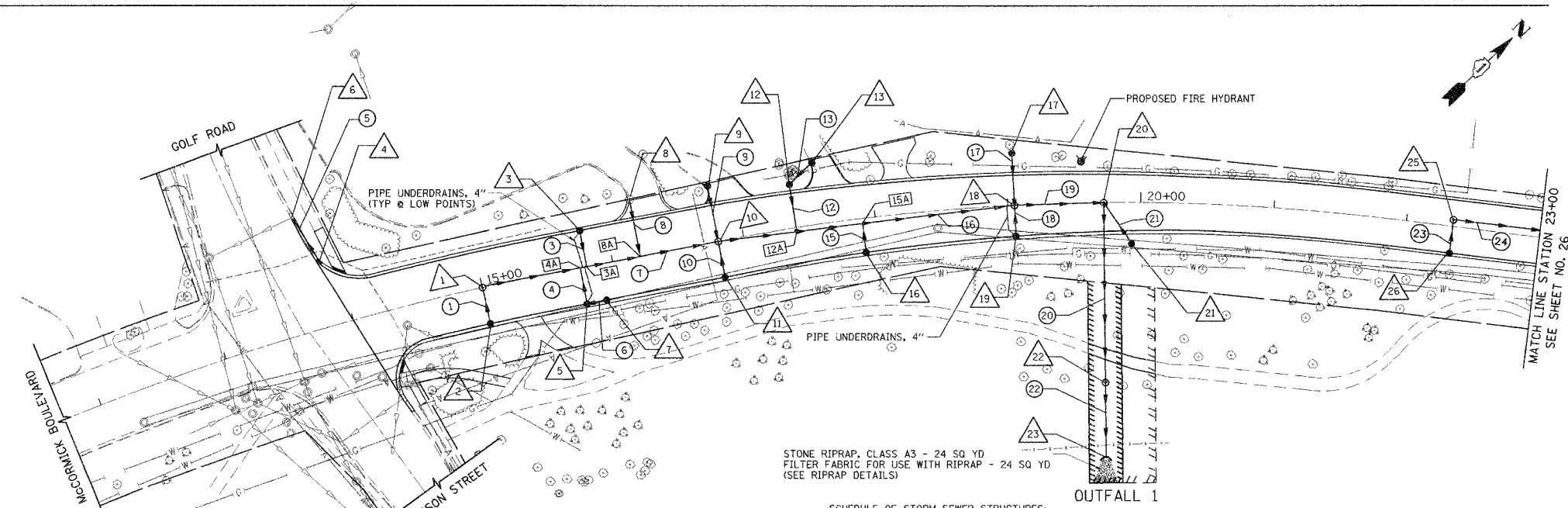


F.A.U.	SECTION	COUNTY	TOTAL SHEETS	SHEET NO.
2832	00-00218-00-FP	COOK	108	25
STA 14+00	TO STA 23+00			
FED. ROAD DIST. NO. 7 ILLINOIS FED. AID PROJECT				

CONTRACT NO. 83773



- NOTES
- THE COST OF CONNECTING EXISTING STORM SEWERS TO THE PROPOSED DRAINAGE SYSTEM AND CONNECTING PROPOSED STORM SEWER TO EXISTING STRUCTURES SHALL BE INCLUDED IN THE COST OF THE CONTRACT. HOWEVER, THE NECESSARY PIPE USED WILL BE PAID FOR AT THE CONTRACT UNIT PRICE FOR "STORM SEWER" OF THE SIZE REQUIRED.
 - OFFSETS AND TOP OF FRAME OR LID ELEVATIONS FOR STRUCTURES WHICH ARE LOCATED IN THE GUTTER ARE GIVEN AT THE EDGE OF PAVEMENT WITH RELATION TO THE PROPOSED CENTERLINE.
 - OFFSETS AND TOP OF FRAME OR LID ELEVATIONS FOR STRUCTURES NOT LOCATED IN THE GUTTER ARE GIVEN TO THE CENTER OF THE STRUCTURE WITH RELATION TO THE PROPOSED CENTERLINE.
 - CENTER OF RIM FOR STRUCTURES ON MAINLINE THAT ARE LOCATED IN PAVEMENT SHOULD BE PLACED AT SAME OFFSET AS STRUCTURE IS PLACED.
 - THE REMOVAL OF EXISTING FLARED END SECTIONS SHALL BE PAID FOR AT THE CONTRACT UNIT PRICE FOR "STORM SEWER REMOVAL" OF THE SIZE AND LENGTH SPECIFIED.
 - STORM SEWER (WATER MAIN REQUIREMENTS) IS TO BE USED AT LOCATIONS WHERE LATERAL SEPARATION BETWEEN THE SEWER AND WATER MAIN IS LESS THAN 10 FEET AND THE WATER MAIN INVERT IS LESS THAN 18 INCHES ABOVE THE STORM SEWER CROWN.
 - STORM SEWER (WATER MAIN REQUIREMENTS) IS TO BE USED AT LOCATIONS WHERE THE STORM SEWER CROSSES ABOVE THE WATERMAIN.
 - ALL MWRDGC MANHOLES SHALL BE ADJUSTED IN ACCORDANCE WITH MWRDGC STANDARD NO. 8-121 (SEE SHEET 60)
 - ALL WATER MAIN TO BE CLASS 52 DUCTILE IRON WITH POLYETHYLENE ENCASUREMENT. INSTALLATION IN ACCORDANCE TO STANDARD SPECIFICATIONS FOR WATER & SEWER MAIN CONSTRUCTION IN ILLINOIS AND EVANSTON STANDARD SPECIFICATIONS. FIRE HYDRANT, VALVE BOX AND VALVE INSTALLATION SHALL BE IN ACCORDANCE WITH CITY OF EVANSTON STANDARDS.
 - MEG-A-LUG JOINT RESTRAINTS ARE REQUIRED AT ALL VALVES, CAPS, FITTINGS AND PIPE WITHIN 20' OF A FITTING. CONTRACTOR TO PROVIDE ALL NECESSARY TAPS FOR REQUIRED PRESSURE TEST, FLUSHING, AND DISINFECTION OF MAIN. COST OF THESE ITEMS ARE INCLUDED IN THE COST OF THE WATERMAIN INSTALLED.
 - THE CONTRACTOR SHALL USE EXTREME CAUTION WHILE EXCAVATING ALONG THE NORTH APPROACH OF THE GOLF ROAD INTERSECTION TO ENSURE THAT THE EXISTING TRAFFIC SIGNAL CONDUIT IS MAINTAINED AT ALL TIMES. IF THE CONTRACTOR'S OPERATIONS DAMAGE THE CONDUIT OR DISRUPT SIGNAL OPERATIONS, THE CONTRACTOR SHALL BE REQUIRED TO MAKE NECESSARY REPAIRS IN ORDER TO RESTORE SIGNAL OPERATIONS AT HIS/HER OWN EXPENSE.
 - THE CONTRACTOR SHALL EXERCISE EXTREME CAUTION WHEN ADJUSTING THE VENTURI METER PITS LOCATED IN THE NORTHEAST CORNER OF EMERSON STREET AND MCCORMICK BOULEVARD. ANY DAMAGE TO THE METERS OR SENSING EQUIPMENT (1/4-INCH COPPER LINES) WILL BE REPAIRED AT THE CONTRACTOR'S OWN EXPENSE.
 - TO ADJUST THE FIRE HYDRANT THE CONTRACTOR SHALL REMOVE THE EXISTING 6-INCH EXTENSION AND REPLACE IT WITH A 12-INCH EXTENSION. THE 6-INCH EXTENSION SHALL REMAIN THE PROPERTY OF THE CITY.
 - THE REMOVAL OF THE EXTENSION FROM THE MAINLINE TO THE FIRE HYDRANT SHALL BE INCLUDED IN THE COST OF FIRE HYDRANTS TO BE REMOVED. THE REMOVAL OF THE EXISTING TEE ON THE WATER MAIN SHALL BE INCLUDED IN THE COST OF THE WATER MAIN 8" WHICH WILL BE INSTALLED WHERE THE TEE WAS REMOVED.
 - ANY PROPOSED MANHOLES, CATCH BASINS, AND VALVE VAULTS WHICH WILL BE OWNED BY THE CITY OF EVANSTON SHALL NOT HAVE CAST IRON STEPS IN THEM.
 - THE CONTRACTOR SHALL ROTATE THE EXISTING TEE TO FACE WEST WHICH SHALL BE INCLUDED IN THE COST OF FIRE HYDRANTS TO BE MOVED.



SCHEDULE OF STORM SEWER TEES AT BLIND CONNECTS:

TEE NO.	TYPE OF TEE	LARGER PIPE INV
3A	RCP, 15" PIPE WITH 12" RISER	594.47
4A	RCP, 15" PIPE WITH 12" RISER	594.49
9A	RCP, 15" PIPE WITH 12" RISER	594.35
12A	RCP, 21" PIPE WITH 12" RISER	593.75
15A	RCP, 21" PIPE WITH 12" RISER	593.64

SCHEDULE OF STORM SEWER STRUCTURES:

PIPE NO.	ITEM	CLASS	TYPE	SIZE	LENGTH	SLOPE	TBF (CU YD)
1	SS	A	1	12"	23.5	1.00%	5
2	SS	A	2	12"	24.9	1.00%	12
3	SS	A	2	12"	24.9	1.00%	9
4	SS	A	1	12"	36.9	1.00%	3
5	SS	A	1	12"	12.0	1.00%	3
6	SS	A	2	15"	176.1	0.32%	87
7	SS	A	2	12"	40.8	1.00%	19
8	SS	A	1	12"	38.4	1.00%	6
9	SS	A	1	12"	23.5	1.00%	5
10	SS	A	1	12"	33.2	1.00%	19
11	SS	A	2	12"	19.5	1.00%	14
12	SS	A	2	12"	22.5	1.00%	14
13	SS	A	2	21"	219.4	0.21%	166
14	SS	A	2	12"	34.5	1.00%	10
15	SS	A	1	12"	18.5	1.00%	4
16	SS	A	2	24"	62.0	0.17%	64
17	SS	WM REOMTS	3	24"	130.0	0.23%	55
18	SS	A	1	12"	32.9	1.00%	12
19	SS	A	1	12"	35.2	0.17%	0
20	SS	A	1	12"	21.0	1.00%	4
21	SS	A	2	12"	201.0	0.44%	65

SCHEDULE OF STORM SEWER STRUCTURES:

STR. NO.	STATION	OFFSET (FT)	TYPE	FRAME & GRATE	RIM ELEV.	NE	NW	SE	SW	EAST	WEST
1	15+00.0	0.0	LT	MH YA 4 DIA	T21F&G	600.00	594.73				
2	15+00.0	27.5	RT	CB YA 4 DIA	T21F&G	600.26		596.01			
3	15+80.0	27.5	LT	CB YA 4 DIA	T3F&G	600.55			594.84		
4	13+87.6	49.4	LT	INLETS TA	T3F&G	600.08					597.27
5	15+75.0	27.5	RT	CB YA 4 DIA	T21F&G	599.07	594.97	594.87			
6	13+77.5	86.9	LT	EX INLET	ADJ EX F&G	600.00				596.85	596.90
7	15+90.0	27.5	RT	CB YA 4 DIA	T21F&G	599.08				595.09	
8	16+21.0	43.4	LT	EX CB	ADJ EX F&G	600.19				594.88	
9	16+80.6	42.4	LT	CB YA 4 DIA	T1F OL	600.25				597.00	
10	16+80.6	0.0	LT	MH YA 4 DIA	T1F CL	600.15	593.86	596.62	595.87	594.16	
11	16+80.6	27.5	RT	CB YA 4 DIA	T21F&G	599.35				596.10	
12	17+40.0	35.0	LT	CB YA 4 DIA	T8G	600.39				594.55	
13	17+58.7	46.6	LT	CB YA 4 DIA	T1F OL	600.31				594.75	
14	NOT USED										
15	NOT USED										
16	17+90.0	25.4	RT	CB YA 4 DIA	T21F&G	599.96				594.24	
17	19+05.0	35.0	LT	CB YA 4 DIA	T8G	598.68				595.43	
18	19+05.0	0.0	LT	MH YA 5 DIA	T1F OL	601.27	593.11	595.09	597.17	593.41	
19	19+05.0	23.0	RT	CB YA 4 DIA	T21F&G	600.60				597.35	
20	19+72.0	0.0	LT	MH YA 5 DIA	T1F CL	601.61	597.23			587.90	
21	19+93.2	30.9	RT	CB YA 4 DIA	T8G	600.81				593.00	
22	19+72.0	135.0	RT	MH YA 5 DIA	T1F CL	601.06				587.60	585.79
23	19+72.0	191.0	RT	END SECTION 24	NONE					585.70	
24	NOT USED										
25	22+35.0	5.0	LT	MH YA 4 DIA	T1F CL	601.23	596.58			597.45	
26	22+35.0	20.0	RT	CB YA 4 DIA	T3F&G	600.91				597.66	

TRANS SYSTEMS CORPORATION

REVISIONS

NAME	DATE
CEC/PAS	5/23/05
CEC/PAS	9/06/05

ILLINOIS DEPARTMENT OF TRANSPORTATION
DRAINAGE AND UTILITIES PLAN
 MCCORMICK BOULEVARD
 STATION 14+00 TO STATION 23+00

DATE 9/03/04
 DRAWN BY GEW
 CHECKED BY PAS

