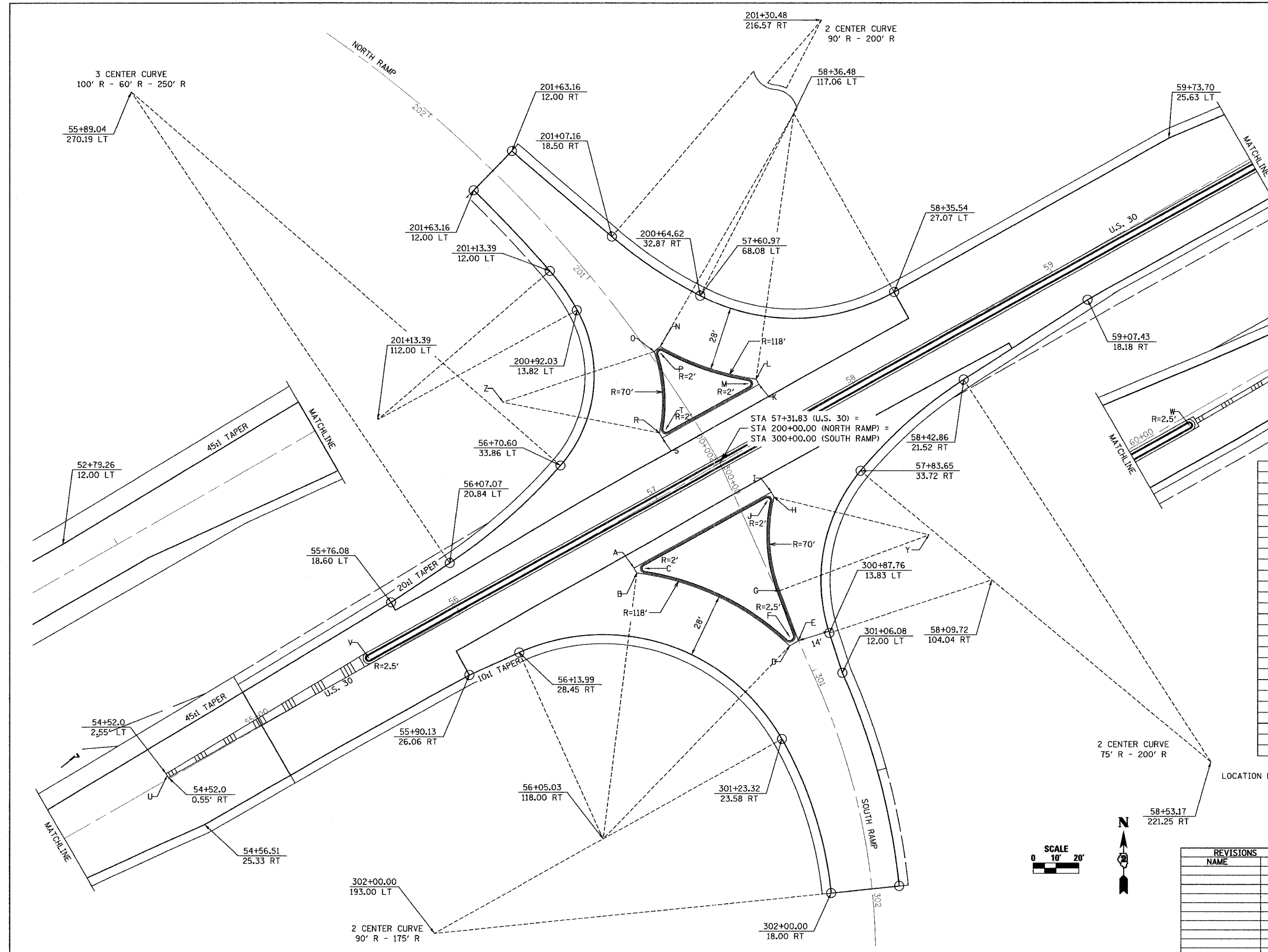
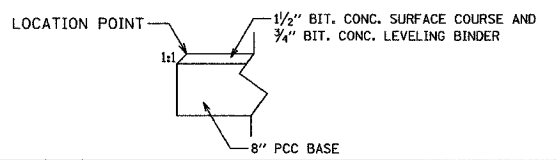


F.A.P. RTE.	SECTION	COUNTY	TOTAL SHEETS	SHEET NO.
309	TVBR-1&7HR	WHITESIDE	146	28
STA.		TO STA.		
FED. ROAD DIST. NO.		ILLINOIS FED. AID PROJECT		
CONTRACT #84883				



INTERSECTION STATION - OFFSET		
POINT	STATION	OFFSET
A	56+76.14	21.31 RT
B	56+76.11	23.81 RT
C	56+80.26	23.87 RT
D	300+85.94	4.45 RT
E	300+85.36	0.00 RT
F	300+82.09	2.82 RT
G	300+61.94	1.33 RT
H	57+45.03	24.76 RT
I	57+45.07	22.26 RT
J	57+41.67	24.71 RT
K	57+63.91	21.49 LT
L	57+63.94	23.99 LT
M	57+59.88	24.04 LT
N	200+57.02	5.58 RT
O	200+56.80	2.17 RT
P	200+54.43	4.05 RT
R	57+15.43	24.66 LT
S	57+15.39	22.16 LT
T	57+18.66	24.61 LT
U	54+52.00	1.55 LT
V	55+55.50	2.35 LT
W	60+28.50	4.15 RT
X	61+32.00	3.15 RT
Y	57+95.68	73.08 RT
Z	56+62.61	70.60 LT



REVISIONS	
NAME	DATE

ILLINOIS DEPARTMENT OF TRANSPORTATION
INTERSECTION GEOMETRICS
 SCALE: VERT. 1" = 10'
 HORIZ. 1" = 40'
 DATE 08/25/2005
 DRAWN BY SWEET
 CHECKED BY ZELINSKAS