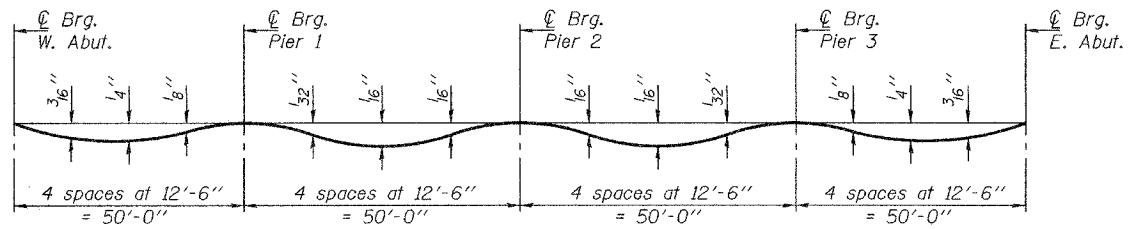


STATE OF ILLINOIS
DEPARTMENT OF TRANSPORTATION

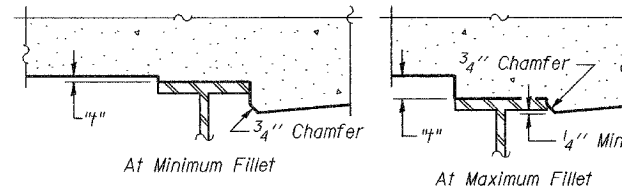
ROUTE NO.	SECTION	COUNTY	SHEET	SHEET NO.
F.A.P. 309	7HBR-1	WHITESIDE	146	40
FED. ROAD DIST. NO. 7		ILLINOIS	FED. AID PROJECT	
Contract #84883				



DEAD LOAD DEFLECTION DIAGRAM

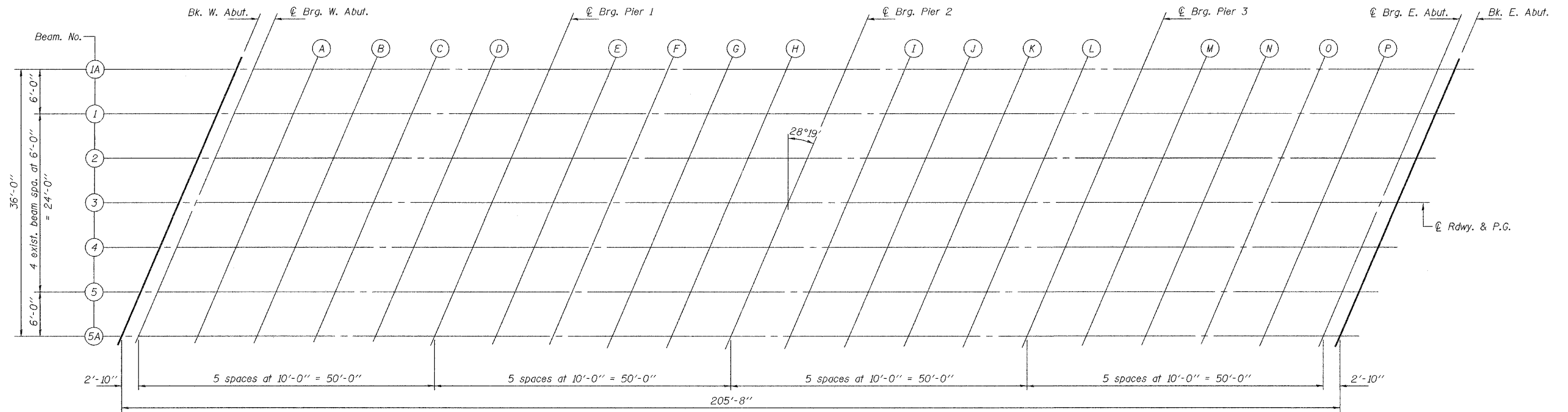
(Includes weight of concrete only.)

Note: The above deflections are not to be used in the field if the Engineer is working from the grade elevations adjusted for dead load deflections as shown on sheet 4 of 23.



To determine "t": After all structural steel has been erected, elevations of the top flanges of the beams shall be taken at intervals shown below. These elevations subtracted from the "Theoretical Grade Elevations Adjusted for Dead Load Deflection" shown on sheet 4 of 23, minus slab thickness, equals the fillet heights "t" above top flange of beams.

FILLET HEIGHTS



PLAN

DESIGNED	CCC
CHECKED	DPN
DRAWN	h.t. duong
CHECKED	CCC/DPN

Oct. 11, 2005
 EXAMINED *Thomas J. Demagala*
 ENGINEER OF BRIDGE DESIGN
 PASSED *Ralph E. Anderson*
 ENGINEER OF BRIDGES AND STRUCTURES

TOP OF SLAB ELEVATIONS
F.A.P. RTE. 309 - SEC. 7HBR-1
WHITESIDE COUNTY
STATION 51+17.83
STRUCTURE NO. 098-6000