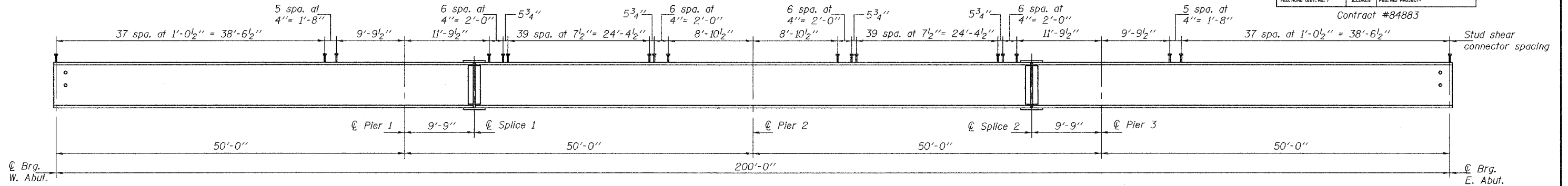


STATE OF ILLINOIS
DEPARTMENT OF TRANSPORTATION

ROUTE NO.	SECTION	COUNTY	TOTAL SHEETS	SHEET NO.
F.A.P. 309	7HBR-1	WHITESIDE	146	47
FED. ROAD DIST. NO. 7		ILLINOIS	FED. AID PROJECT-	

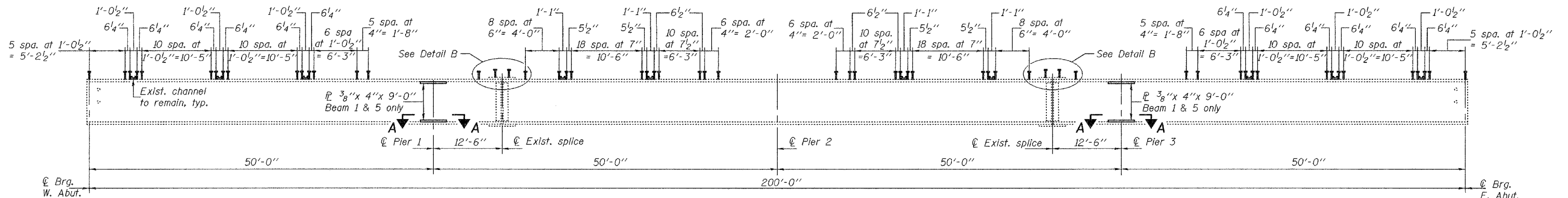
Contract #84883

SHEET NO. 10
23 SHEETS



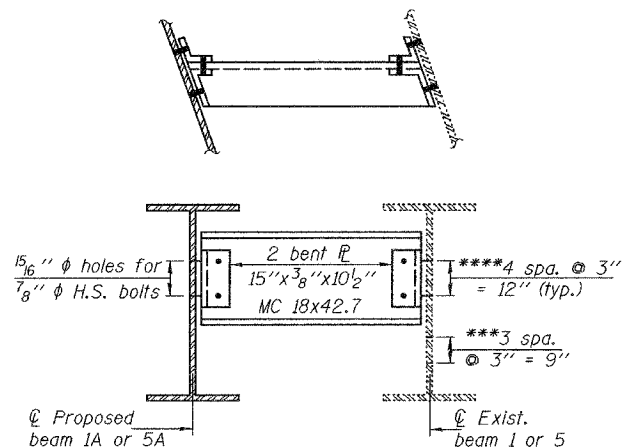
ELEVATION

Beams 1A & 5A W33x130 (NTR) and splice plates.



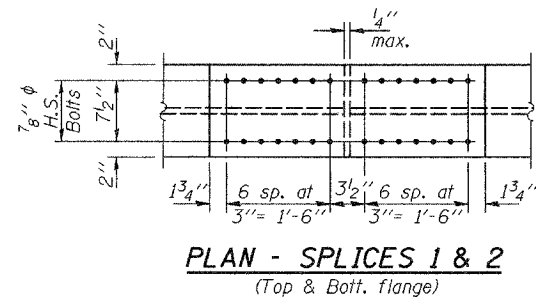
ELEVATION

Existing Beams 1 thru 5.

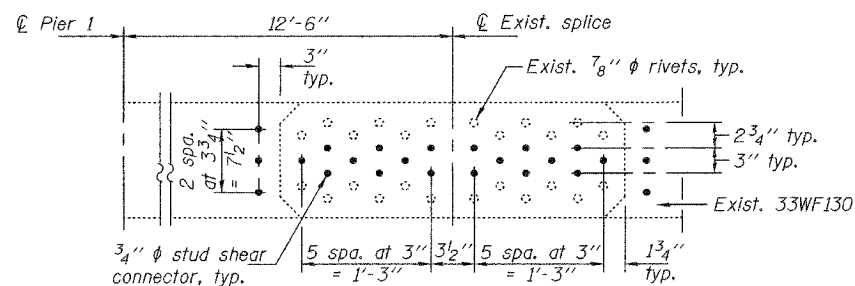


DIAPHRAGM D1
(4 Required)

*** Existing holes in existing beam 1 & 5 shall be filled with 7/8" ϕ H.S. bolts. Cost included with Furnishing and Erecting Structural Steel.
 *** Use holes in web of existing W33x130 as template to drill 15/16" ϕ holes in bent PL. Cost included with Furnishing and Erecting Structural Steel.

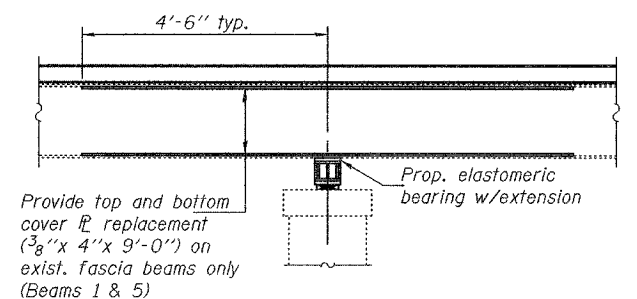


PLAN - SPLICES 1 & 2
(Top & Bott. flange)

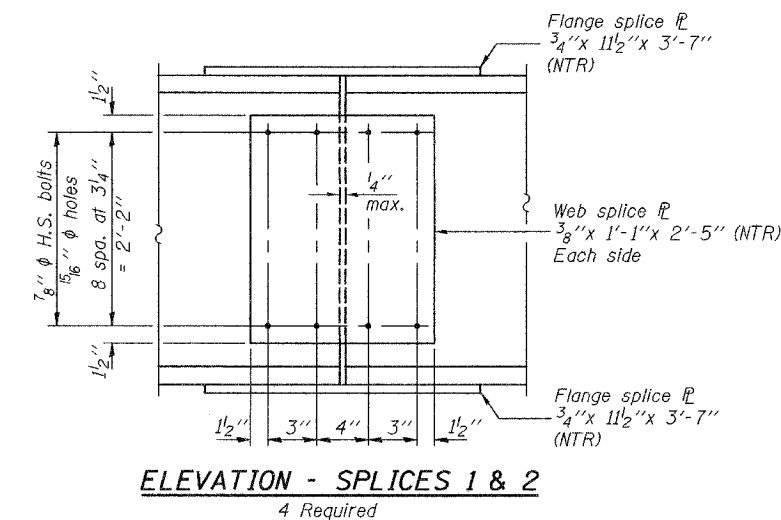


DETAIL B

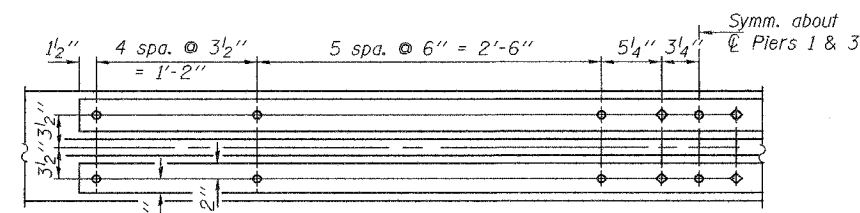
(Exist. splice in span 2 shown; exist. splice in span 3 similar)



SECTION AT PIERS 1 & 3



ELEVATION - SPLICES 1 & 2
4 Required



VIEW A-A

(No. Required = 16 PL 3/8" x 4" x 9'-0")

Note 1: The Contractor shall remove the existing rivets and existing PL 3/8" x 4" x 9'-0" after the deck is removed. The Contractor shall then attach a new PL 3/8" x 4" x 9'-0" using HS bolts of the same diameter. See View A. Cost is included in Structural Steel Repair, Pound. See Special Provisions.

Notes: Beams 1A & 5A (W33x130) and all splice plates shall be AASHTO M270, Grade 36.
 "NTR" denotes members to which Notch Toughness Requirements are applicable.
 For cover plate details, see sheet 8 of 23.
 For locations and dimensions of holes in beam ends, see End of Beam Elevation on sheet 9 of 23.

DESIGNED	CCC
CHECKED	DPN
DRAWN	h.t. duong
CHECKED	CCC/DPN

EXAMINED *Thomas J. Donagabadi*
 PASSED *Ronald E. Anderson*
 Oct. 11, 2005
 ENGINEER OF BRIDGE DESIGN
 ENGINEER OF BRIDGES AND STRUCTURES

STRUCTURAL STEEL DETAILS
F.A.P. RTE. 309 - SEC. 7HBR-1
WHITESIDE COUNTY
STATION 51+17.83
STRUCTURE NO. 098-6000