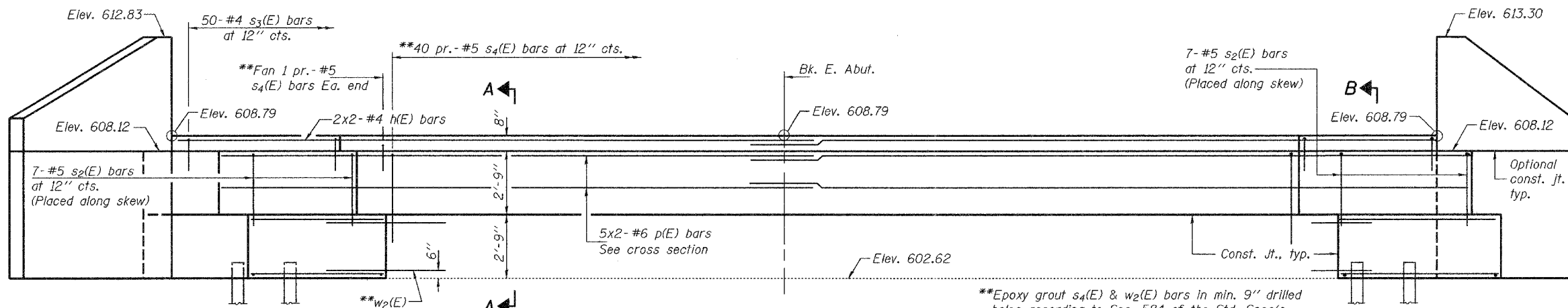


STATE OF ILLINOIS
DEPARTMENT OF TRANSPORTATION

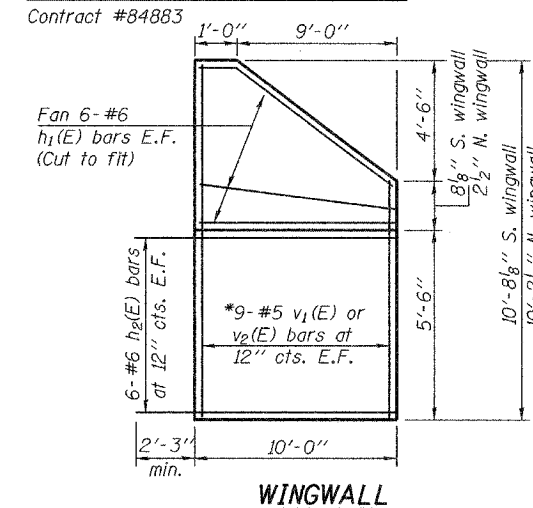
| | | | | |
|-----------------------|---------|-----------|------------------|-----------|
| ROUTE NO. | SECTION | COUNTY | TOTAL SHEETS | SHEET NO. |
| F.A.P. 309 | 7HBR-1 | WHITESIDE | 146 | 54 |
| FED. ROAD DIST. NO. 7 | | ILLINOIS | FED. AID PROJECT | |

SHEET NO. 17
23 SHEETS

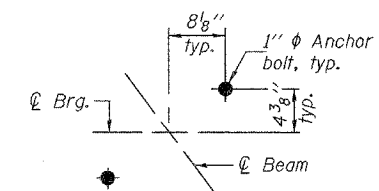


ELEVATION

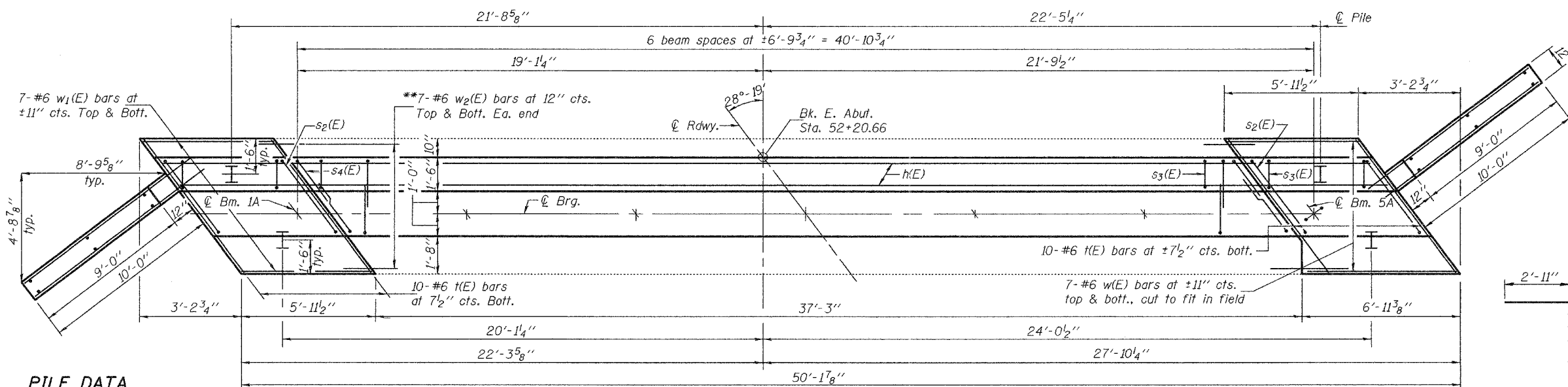
**Epoxy grout s4(E) & w2(E) bars in min. 9" drilled holes according to Sec. 584 of the Std. Spec's. Cost of hole drilling and epoxy grout included with Reinforcement Bars, Epoxy Coated.



WINGWALL



ANCHOR BOLT OFFSET



PLAN

BAR s4(E)

PILE DATA

Type: Steel HP12x53
Capacity: 45 Tons Driven to 67.5 Ton
Est. Length: 56'
No. Req'd.: 4

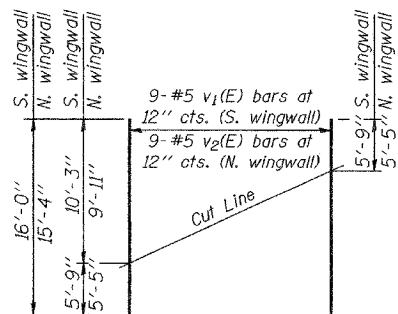
MIN. BAR LAPS

- #4 bar = 1'-8"
- #5 bar = 2'-2"
- #6 bar = 2'-7"

Notes: Space reinforcement in cap to miss anchor bolts.
All edges shall have standard 3/4" chamfers except as noted.
Pour steps monolithically with cap.
For anchor bolt installation details see sheet 14 of 23.
Bars indicate thus 3x2-#5 etc. indicates 3 lines of bars with 2 lengths per line.

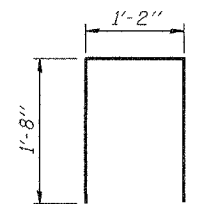
| | |
|----------|------------|
| DESIGNED | CCC |
| CHECKED | DPN |
| DRAWN | h.t. duong |
| CHECKED | CCC/DPN |

Oct. 11, 2005
EXAMINED *Thomas J. Demagala*
ENGINEER OF BRIDGE DESIGN
PASSED *Ralph E. Anderson*
ENGINEER OF BRIDGES AND STRUCTURES

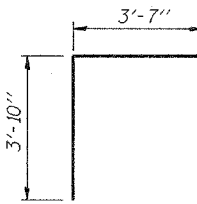


FIELD CUTTING DIAGRAM

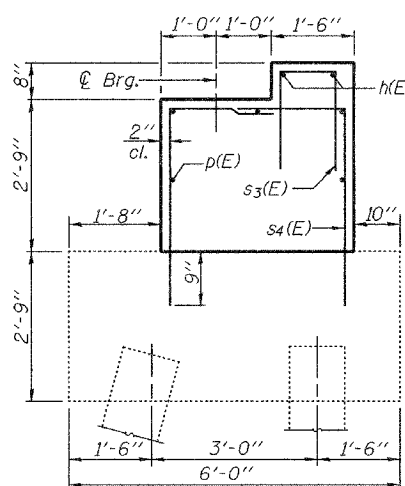
*Order v1(E) & v2(E) full length. Cut as shown and use remainder of bars in opposite face.



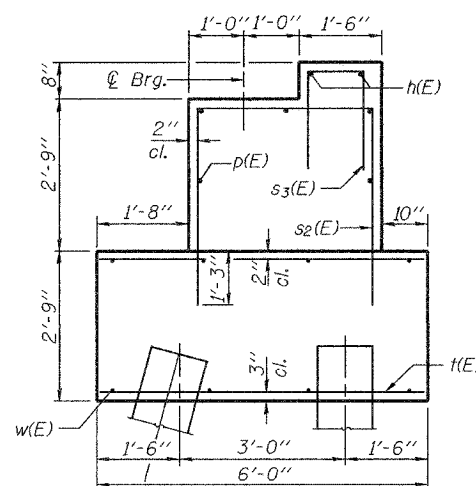
BAR s3(E)



BAR s2(E)



SECTION A-A



SECTION B-B

BILL OF MATERIAL

| Bar | No. | Size | Length | Shape |
|----------------------------------|-----|----------|--------|-------|
| h(E) | 4 | #4 | 25'-9" | — |
| h1(E) | 24 | #6 | 10'-9" | — |
| h2(E) | 24 | #6 | 12'-3" | — |
| p(E) | 10 | #6 | 26'-4" | — |
| s2(E) | 14 | #5 | 11'-3" | □ |
| s3(E) | 50 | #4 | 4'-6" | □ |
| s4(E) | 80 | #5 | 6'-5" | — |
| t(E) | 20 | #6 | 6'-5" | — |
| v1(E) | 9 | #5 | 16'-0" | — |
| v2(E) | 9 | #5 | 15'-4" | — |
| w(E) | 14 | #6 | 6'-9" | — |
| w1(E) | 14 | #6 | 5'-9" | — |
| w2(E) | 28 | #6 | 3'-6" | — |
| Reinforcement Bars, Epoxy Coated | | Pound | 3040 | |
| Concrete Structures | | Cu. Yds. | 33.5 | |
| Structure Excavation | | Cu. Yds. | 189 | |
| Furnishing Steel Pile HP12x53 | | Foot | 224.0 | |

Reinforcement bars designated (E) shall be epoxy coated.

EAST ABUTMENT
F.A.P. RTE. 309 - SEC. 7HBR-1
WHITESIDE COUNTY
STATION 51+17.83
STRUCTURE NO. 098-6000