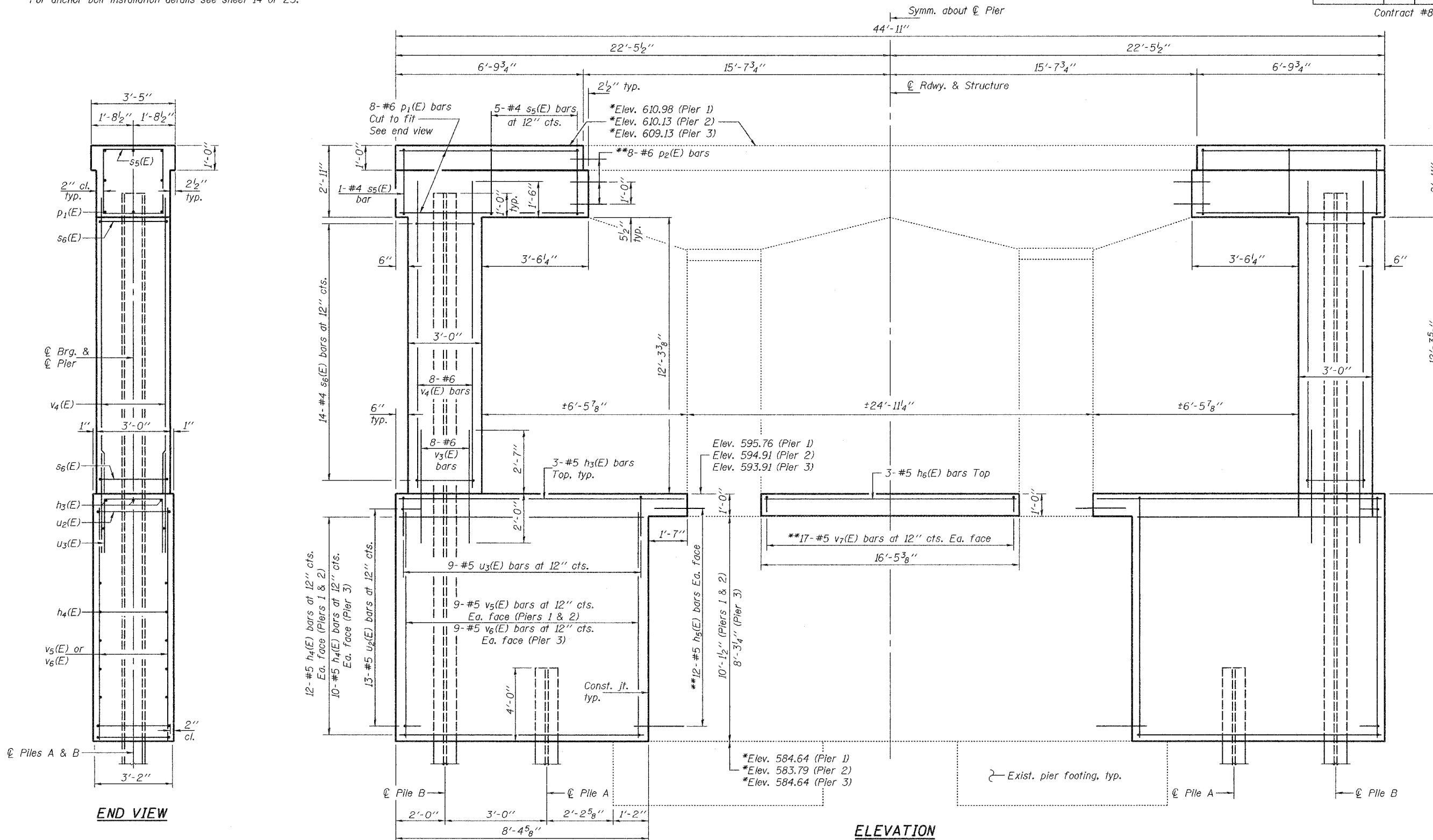


Notes: Space reinforcement in cap to miss anchor bolts.
 All edges shall have standard 3/4" chamfers except as noted.
 For anchor bolt installation details see sheet 14 of 23.

STATE OF ILLINOIS
 DEPARTMENT OF TRANSPORTATION

ROUTE NO.	SECTION	COUNTY	TOTAL SHEETS	SHEET NO.	SHEET NO. 18
F.A.P. 309	7HBR-1	WHITESIDE	146	55	23 SHEETS
FED. ROAD DIST. NO. 7	ALIGNMENT	FED. AID PROJECT-			

Contract #84883



DESIGNED	CCC
CHECKED	DPN
DRAWN	h.t. duong
CHECKED	CCC/DPN

Oct. 11, 2005
 EXAMINED *Thomas J. Donagallo*
 ENGINEER OF BRIDGE DESIGN
 PASSED *Ralph E. Anderson*
 ENGINEER OF BRIDGES AND STRUCTURES

*These elevations are based on current survey.
 **Epoxy grout h5(E), p2(E) & v7(E) bars in min. 9" drilled holes according to Sec. 584 of the Std. Spec's. Cost of hole drilling and epoxy grout included with Reinforcement Bars, Epoxy Coated.

PILE DATA

Type: Steel HPI2x53
 Capacity: 55 Tons Driven to 82.5 Ton
 No. Req'd. 12
 Est. Length:

Location	Pile A	Pile B
Pier 1	53	74
Pier 2	80	101
Pier 3	58	77

(ft.)

PIERS
 F.A.P. RTE. 309 - SEC. 7HBR-1
 WHITESIDE COUNTY
 STATION 51+17.83
 STRUCTURE NO. 098-6000