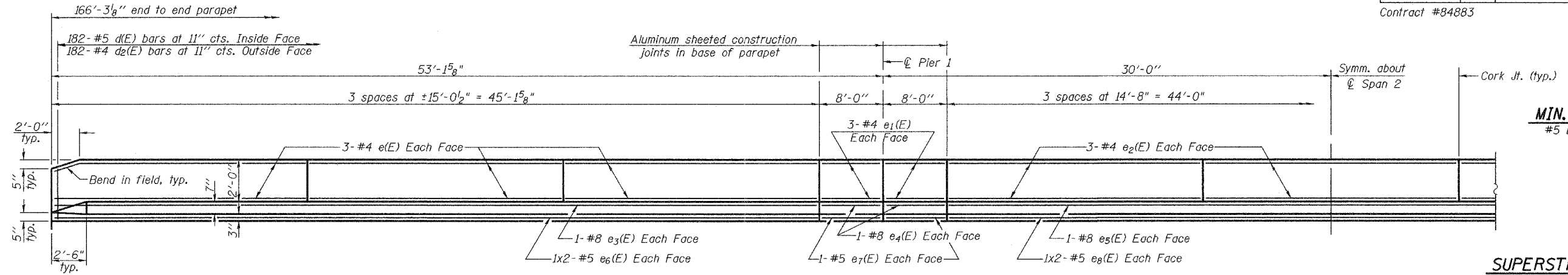


**STATE OF ILLINOIS  
DEPARTMENT OF TRANSPORTATION**

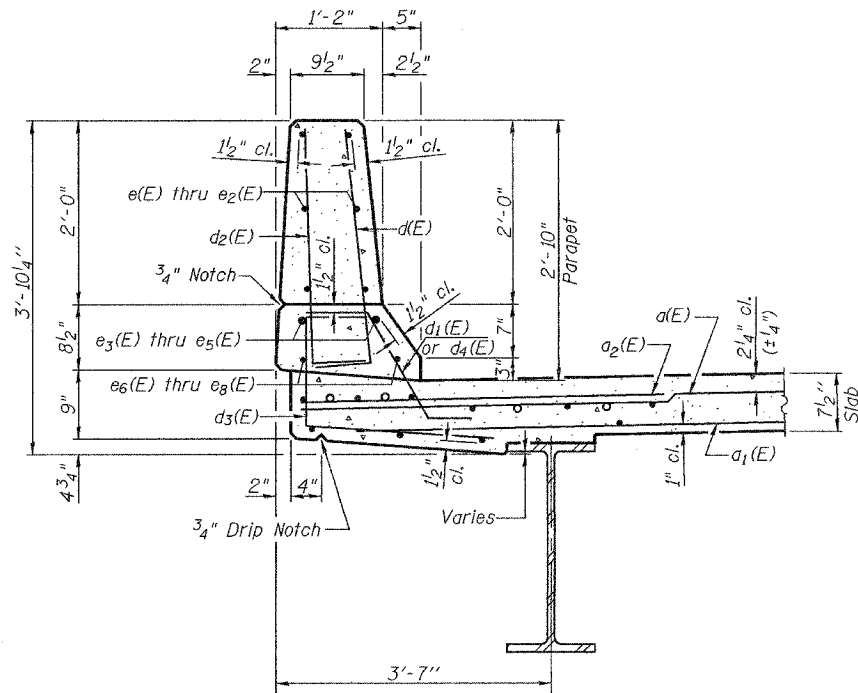
ROUTE NO.	SECTION	COUNTY	SHEETS	SHEET	SHEET NO. 6 22 SHEETS
F.A.P. 309	7VBR	WHITESIDE	146	66	
FED. ROAD DIST. NO. 7	ILLINOIS	FED. AID PROJECT			

Contract #84883

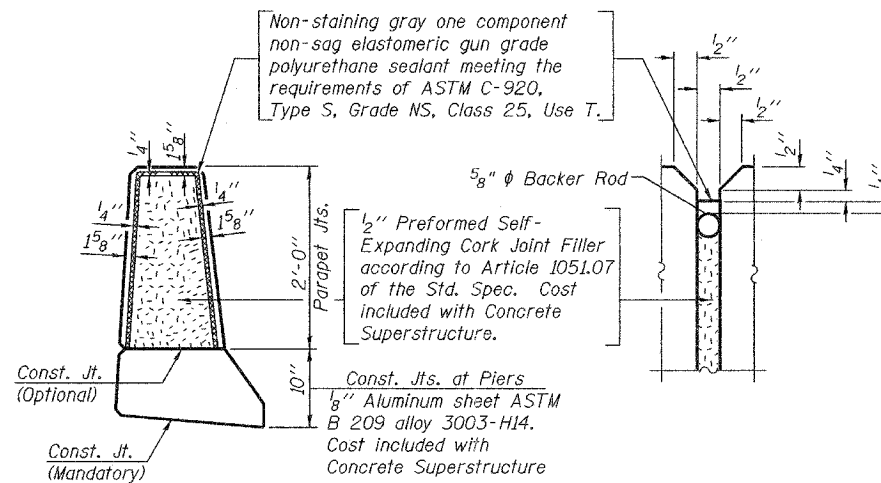


**MIN. BAR LAP**  
#5 bar = 2'-2"

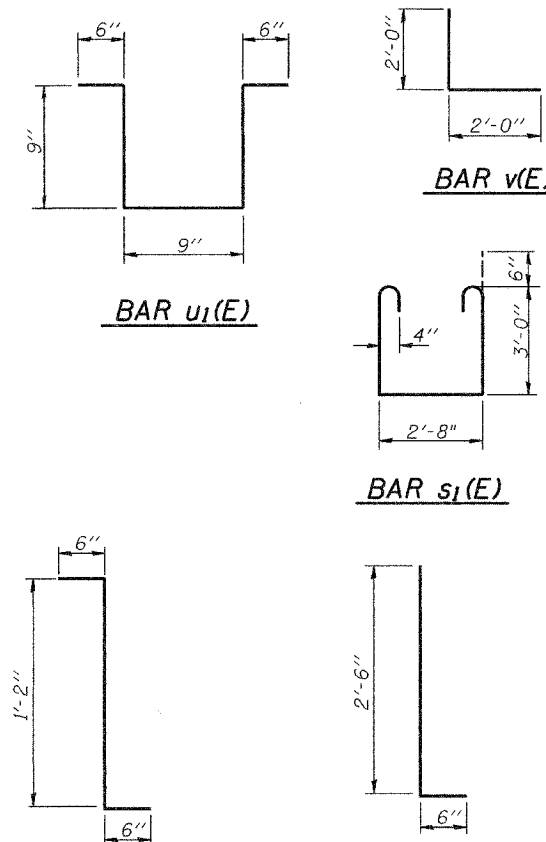
**INSIDE ELEVATION OF PARAPET**  
(Looking North)



**SECTION THRU PARAPET**



**PARAPET JOINT DETAILS**



**BAR d4(E)**

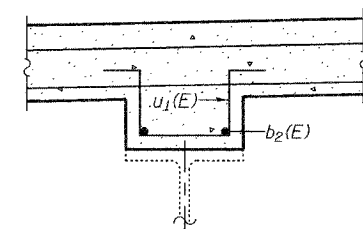
**BARS d(E) & d2(E)**

**SUPERSTRUCTURE  
BILL OF MATERIAL**

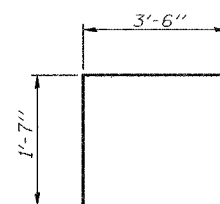
Bar	No.	Size	Length	Shape
a(E)	265	#5	42'-8"	—
a1(E)	199	#5	41'-4"	—
a2(E)	266	#6	4'-6"	—
a3(E)	8	#5	27'-3"	—
b(E)	184	#5	35'-0"	—
b1(E)	86	#6	31'-9"	—
b2(E)	260	#5	28'-4"	—
d(E)	364	#5	3'-0"	—
d1(E)	352	#5	2'-5"	┘
d2(E)	364	#4	3'-0"	┘
d3(E)	364	#4	4'-4"	┘
d4(E)	12	#5	2'-2"	┘
e(E)	72	#4	14'-9"	—
e1(E)	48	#4	7'-9"	—
e2(E)	36	#4	14'-5"	—
e3(E)	8	#8	44'-9"	—
e4(E)	16	#8	7'-9"	—
e5(E)	4	#8	43'-9"	—
e6(E)	16	#5	23'-6"	—
e7(E)	16	#5	7'-9"	—
e8(E)	8	#5	23'-0"	—
m(E)	32	#6	28'-2"	—
m1(E)	24	#6	7'-2"	—
m2(E)	8	#6	4'-1"	—
m3(E)	28	#6	8'-4"	—
s(E)	84	#5	8'-7"	—
s1(E)	84	#4	9'-8"	┘
u(E)	106	#4	5'-6"	┘
u1(E)	830	#4	3'-3"	┘
v(E)	86	#5	4'-0"	┘
Reinforcement Bars, Epoxy Coated		Pound		54370
Concrete Superstructure		Cu. Yds.		270.2

Reinforcement bars designated (E) shall be epoxy coated.  
Bars indicated thus 1 x 2-#5 etc. indicates 1 line of bars with 2 lengths per line.

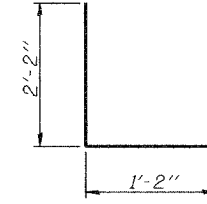
**SUPERSTRUCTURE DETAILS**  
F.A.P. RT. 309 SEC. 7VBR  
WHITESIDE COUNTY  
STATION 47+18.53  
STRUCTURE No. 098-6001



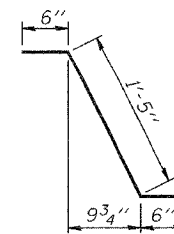
**FILLET FOR BEAMS 1 THRU 5**



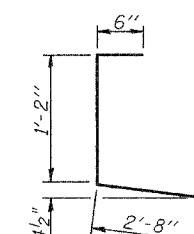
**BAR s(E)**



**BAR u(E)**



**BAR d1(E)**



**BAR d3(E)**

DESIGNED Patrick M. Petrone  
CHECKED Stephen M. Ryan  
DRAWN R. Sommer  
CHECKED P.M.P./S.M.R.

October 11 2005  
EXAMINED Thomas J. Demagalki  
PASSED Ralph E. Anderson