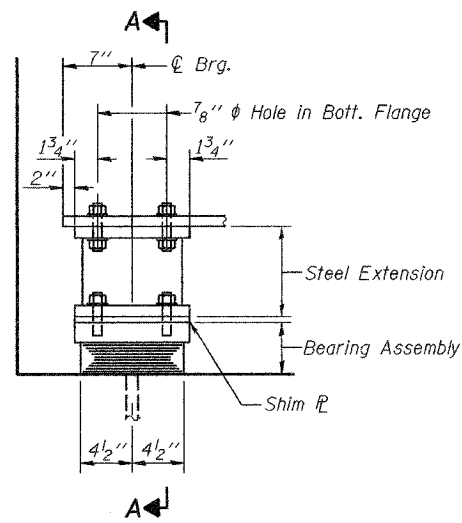


STATE OF ILLINOIS
DEPARTMENT OF TRANSPORTATION

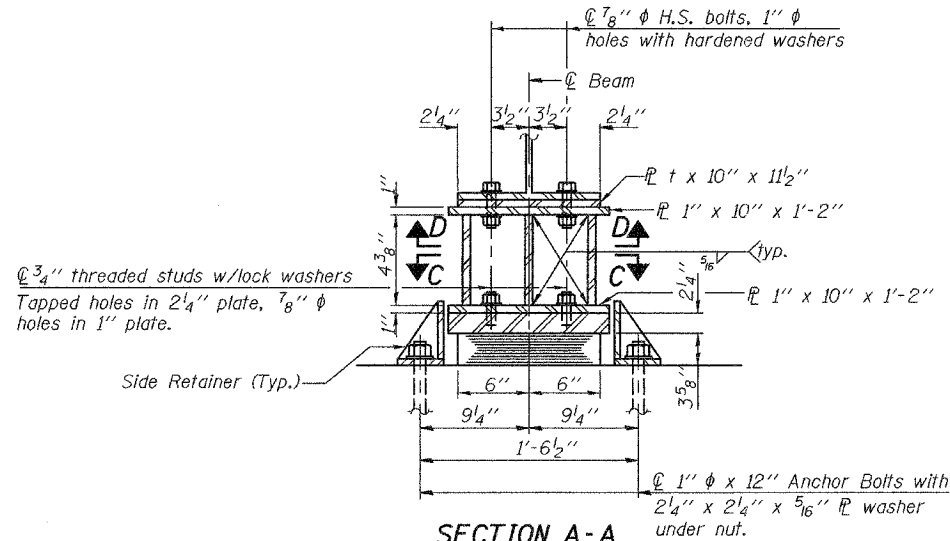
| | | | | | |
|-----------------------|------------|------------------|--------------|-----------|--------------|
| ROUTE NO. | SECTION | COUNTY | TOTAL SHEETS | SHEET NO. | SHEET NO. 10 |
| F.A.P. 309 | 7VBR | WHITESIDE | 14 | 70 | 22 SHEETS |
| FED. ROAD DIST. NO. 7 | ALL SHEETS | FED. AID PROJECT | | | |

Contract #84883



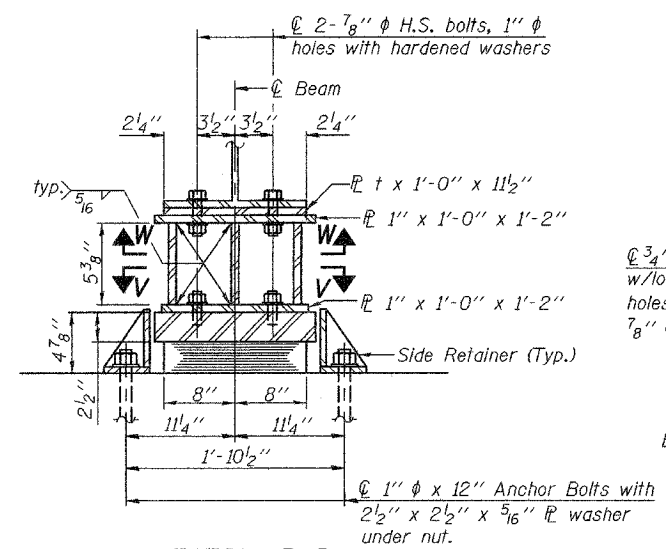
ELEVATION AT ABUTMENT

TYPE I ELASTOMERIC EXP. BRG.



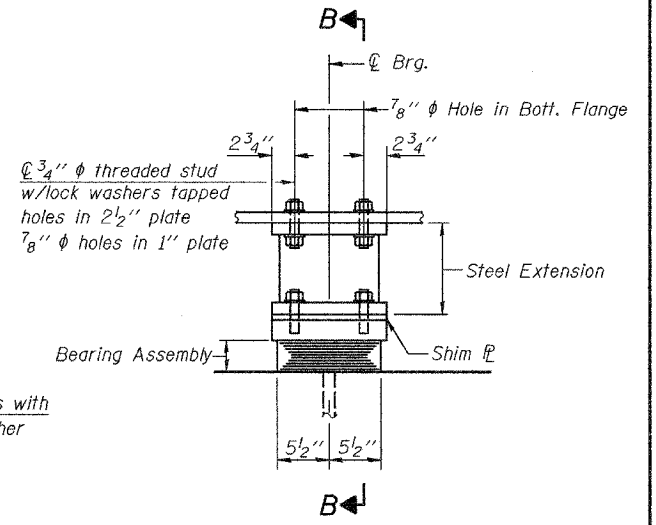
SECTION A-A

(No. Req'd. 14)



SECTION B-B

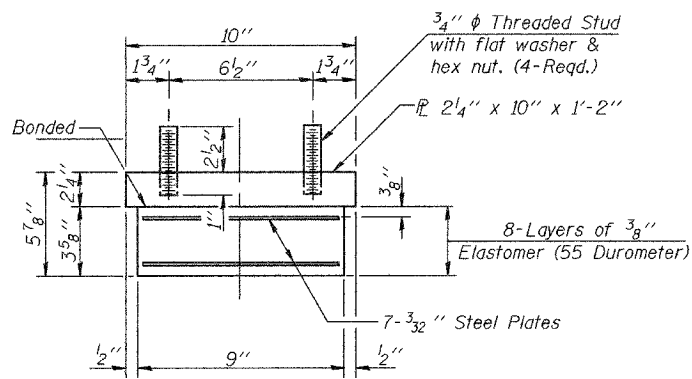
(No. Req'd. 7)



ELEVATION AT PIER 1

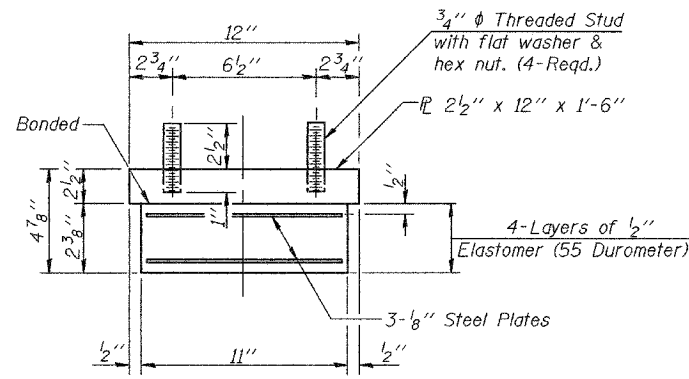
(No. Req'd. 7)

Notes: Anchor bolts at fixed bearings may be built into the masonry.
See sheet 18 of 22 for Anchor Bolt Installation.



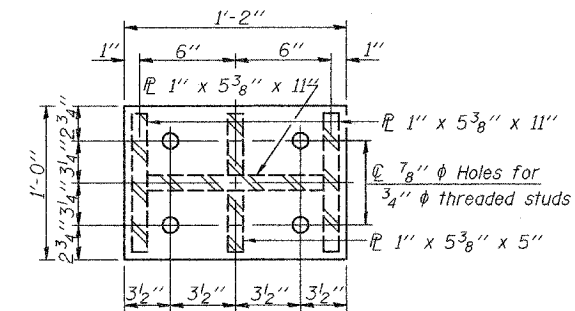
BEARING ASSEMBLY (ABUTMENTS)

Note: Shim plates shall not be placed under Bearing Assembly.

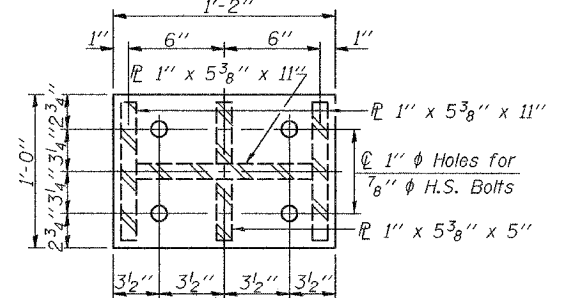


BEARING ASSEMBLY (PIER 1)

Note: Shim plates shall not be placed under Bearing Assembly.



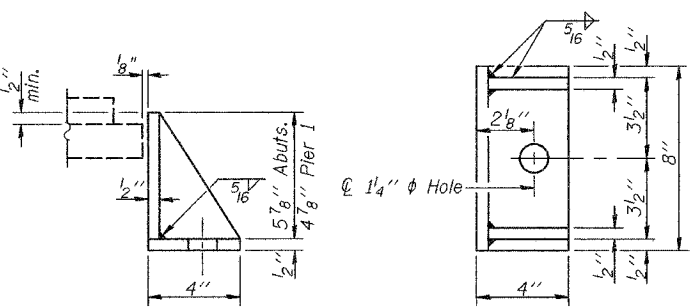
SECTION V-V



SECTION W-W

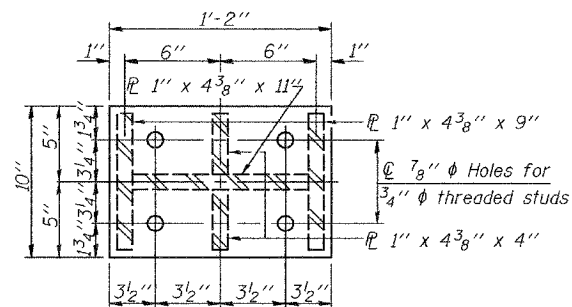
TABLE SHIM t thickness t

| Loc. Bm. # | 1A | 1 | 2 | 3 | 4 | 5 | 5A |
|------------|----|---|--------|--------|--------|--------|--------|
| W. Abut. | 0 | 0 | 3/4" | 3/4" | 7/8" | 1" | 1" |
| Pier 1 | 0 | 0 | 7/8" | 1 1/8" | 1 1/2" | 1 3/4" | 1 3/4" |
| E. Abut. | 0 | 0 | 1 1/8" | 1 5/8" | 1 3/4" | 1 3/4" | 1 3/4" |

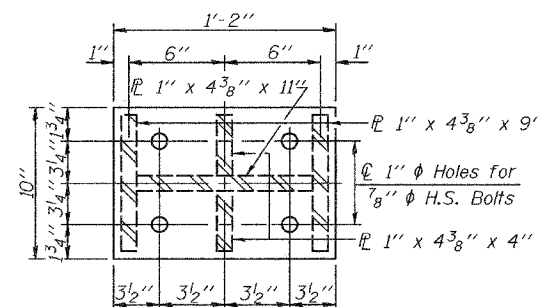


SIDE RETAINER

Equivalent rolled angle with stiffeners will be allowed in lieu of welded plates. Weight included with Furnishing and Erecting Structural Steel.



SECTION C-C



SECTION D-D

BILL OF MATERIAL

| Item | Unit | Total |
|-------------------------------------|------|-------|
| Elastomeric Bearing Assembly Type I | Each | 21 |
| Jack & Remove Existing Bearings | Each | 15 |

BEARING DETAILS
F.A.P. RT. 309 SEC. 7VBR
WHITESIDE COUNTY
STATION 47+18.53
STRUCTURE No. 098-6001

DESIGNED Patrick M. Petrone
CHECKED Stephen M. Ryan
DRAWN R. Sommer
CHECKED P.M.P./S.M.R.

October 11, 2005
EXAMINED Thomas J. Domagalaki
PASSED Ralph E. Anderson