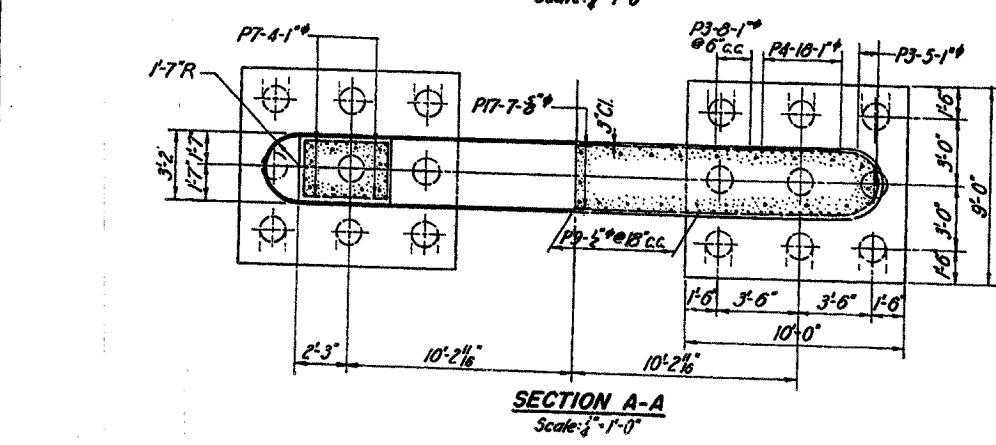
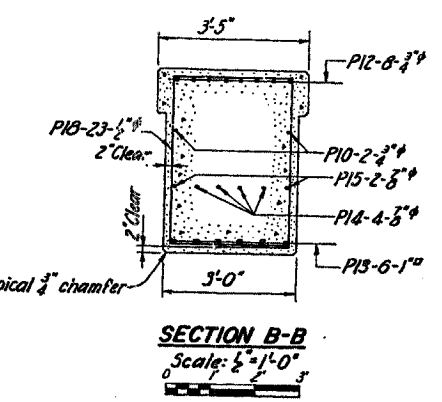
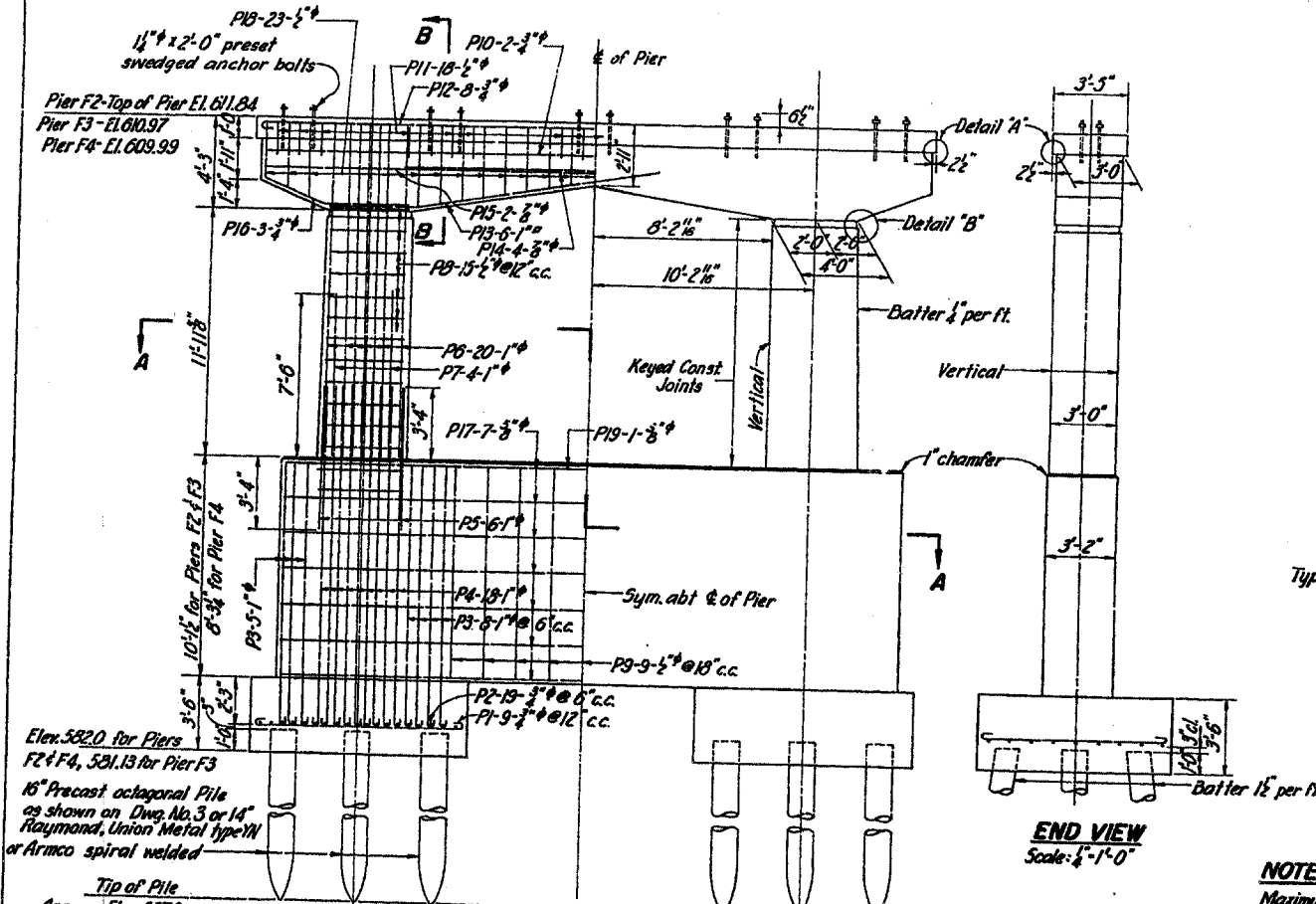
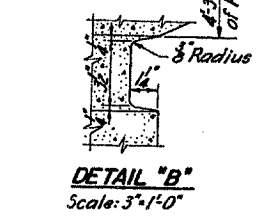
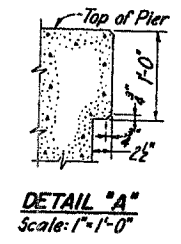
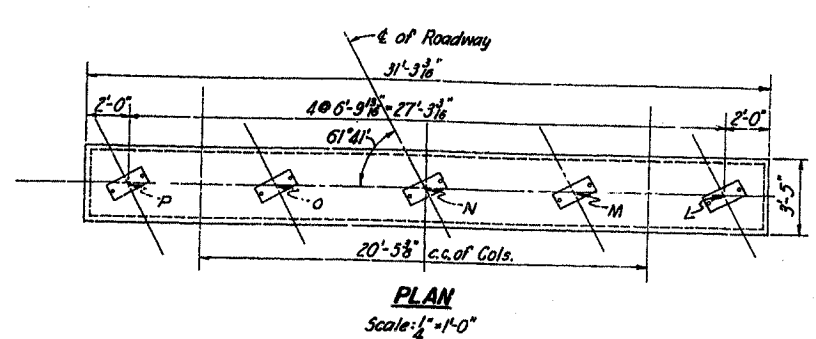
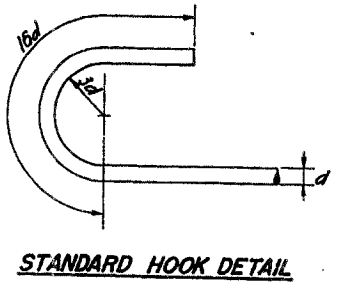


F.A. RTE.	SECTION	COUNTY	TOTAL SHEETS	SHEET NO.
309	7HBR-1 & 7VBR	WHITESIDE	146	84
STA.	TO STA.			
FED. ROAD DIST. NO.	ILLINOIS FED. AID PROJECT			



**NOTES**  
 Maximum dead plus live load per pile is 36 tons.  
 All bar dimensions are out to out and all radii are inside.  
 All reinforcement shall be of the deformed type A.S.T.M. A305-50T lapped 40 diameters at splices.  
 Concrete shall be Class B.  
 All exposed corners shall have 3/4" chamfers unless otherwise noted.  
 Steel shell piles shall have straight bars projecting 1'-0" above tops.



**BAR SCHEDULE FOR PIERS**

Mark	Pier	No.	Stock	Bend
P1	Each	18	3/8" x 11'-0"	Bend
P2	Each	38	3/8" x 10'-0"	9'-8"
P3	F2	26	1" x 13'-1 1/2"	8'-6"
	F3	26	1" x 13'-1 1/2"	12'-1 1/2"
	F4	26	1" x 11'-3"	12'-1 1/2"
P4	F2	36	1" x 16'-0 1/2"	10'-3"
	F3	36	1" x 16'-0 1/2"	15'-0 1/2"
	F4	36	1" x 14'-10"	15'-0 1/2"
P5	Each	12	1" x 6'-8"	Straight
P6	Each	40	1" x 16'-0"	Straight
P7	Each	8	1" x 7'-6"	Straight
P8	Each	30	1/2" x 14'-7 1/2" Avg.	Very by from 3'-0" to 3'-1 1/2"
P9	F2	9	1/2" x 21'-10"	9'-7 1/2"
	F3	9	1/2" x 21'-10"	9'-7 1/2"
	F4	9	1/2" x 18'-1"	7'-9"
P10	Each	4	3/8" x 16'-6"	Straight
P11	Each	18	1/2" x 6'-0"	2'-0"
P12	Each	16	3/8" x 17'-5"	30'-10"
P13	Each	12	1" x 15'-3"	11'-6"
P14	Each	4	3/8" x 16'-0"	Straight
P15	Each	2	3/8" x 30'-6"	Straight
P16	Each	6	3/8" x 7'-6"	4'-0"
P17	Each	14	3/8" x 31'-3"	18'-11"
P18	Each	23	1/2" x 15'-6" Avg.	2'-0"
P19	Each	1	3/8" x 28'-10"	27'-7"

**BAR SCHEDULE FOR ONE ABUTMENT (2 REQ'D)**

Mark	No.	Stock	Bend
A1	41	1/2" x 6'-6"	3'-8"
A2	12	1/2" x 19'-9"	Straight
A3	34	1/2" x 5'-10"	3'-8"
A4	29	1/2" x 6'-8"	5'-7"
A5	25	3/8" x 3'-7"	Straight
A6	25	3/8" x 5'-5"	2'-10"
A7	20	1/2" x 10'-2"	3'-2"
A8	6	3/8" x 19'-7"	6'-4"
A9	4	1/2" x 8'-1"	7'-0"
A10	5	1/2" x 8'-10"	7'-9"
A11	30	1/2" x 19'-2"	Straight
A12	4	1/2" x 5'-8"	3'-8"

**WING WALLS BAR SCHEDULE, ONE ABUT. (2 REQ'D)**

Mark	No.	Stock	Bend
W1	24	1/2" x 2'-6"	Straight
W2	35	1/2" x 7'-6"	Straight
W3	6	1/2" x 14'-11"	6'-0"
W4	6	1/2" x 13'-8"	5'-6"
W5	6	1/2" x 13'-5"	4'-6"
W6	6	1/2" x 13'-2"	5'-0"
W7	1	3/8" x 12'-11"	1'-0"
W7a	1	3/8" x 13'-6"	1'-0"
W8	1	3/8" x 12'-10"	1'-0"
W8a	1	3/8" x 13'-3"	1'-0"
W9	1	1/2" x 9'-7"	4'-0"
W9a	1	1/2" x 10'-4"	4'-0"
W10	12	1/2" x 10'-7"	1'-0"
W11	2	1/2" x 10'-5"	4'-0"
W12	2	1/2" x 9'-11"	4'-5"
W13	2	1/2" x 9'-3"	4'-1 1/2"
W14	2	1/2" x 8'-1"	3'-0 1/2"
W15	2	1/2" x 5'-8"	2'-8"
W16	1	1/2" x 8'-3"	4'-10"
W16a	1	1/2" x 8'-10"	5'-5 1/2"
W17	1	1/2" x 8'-3"	4'-0"
W17a	1	1/2" x 8'-10"	5'-5 1/2"
W18	1	1/2" x 9'-7"	4'-0"
W18a	1	1/2" x 10'-4"	4'-0"
W19	12	1/2" x 5'-0"	Straight

MISSISSIPPI RIVER BRIDGE  
 AT CLINTON, IOWA  
 CITY OF CLINTON BRIDGE COMMISSION  
 PIERS F2, F3, & F4  
 FULTON ROAD BRIDGE  
 SCALES AS NOTED

APPROVED:  
 J. M. Maslin  
 FOR MODJESKI & MASTERS

CONTRACT NO. 7  
 MODJESKI & MASTERS, ENGINEERS  
 OCTOBER, 1951

DRAWING NO. 4