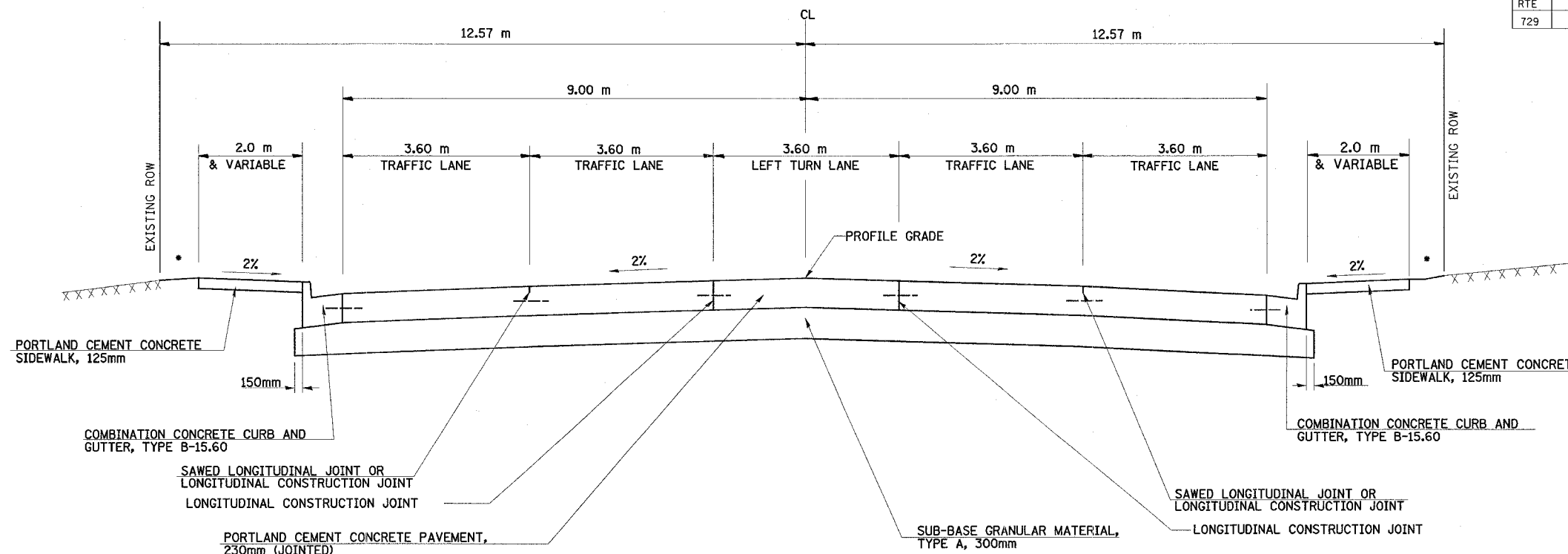


FAP RTE	SECTION	COUNTY	TOTAL SHEETS	SHEET NO.
729	34Z-4	VERMILION	285	14

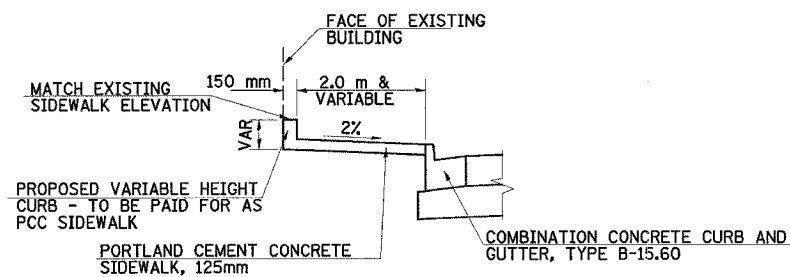


**US ROUTE 136
STATION TO STATION**

STA 90+268.000 TO STA 90+388.900
RT STA 90+469.197 TO RT STA 91+566.534
LT STA 90+469.197 TO LT STA 91+575.417

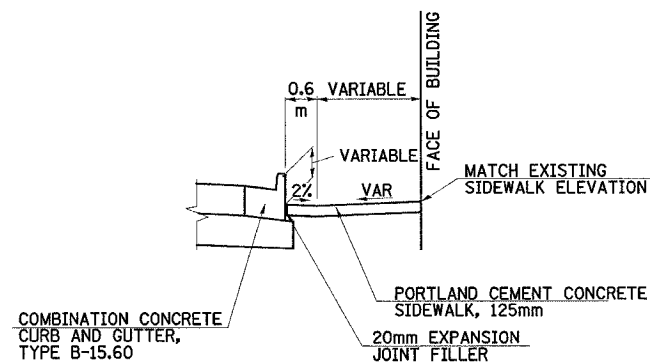
•SEE CROSS SECTIONS FOR SLOPE

② SEE NOTE
③ SEE NOTE



DETAIL A

USE THIS DETAIL AT ALL LOCATIONS WHERE PROPOSED SIDEWALK IS LOWER THAN EXISTING SIDEWALK AT FACE OF BUILDING



DETAIL B

RT STA 90+960.9 TO STA 90+986.690
(SEE SPECIAL DETAIL FOR ELEVATIONS)

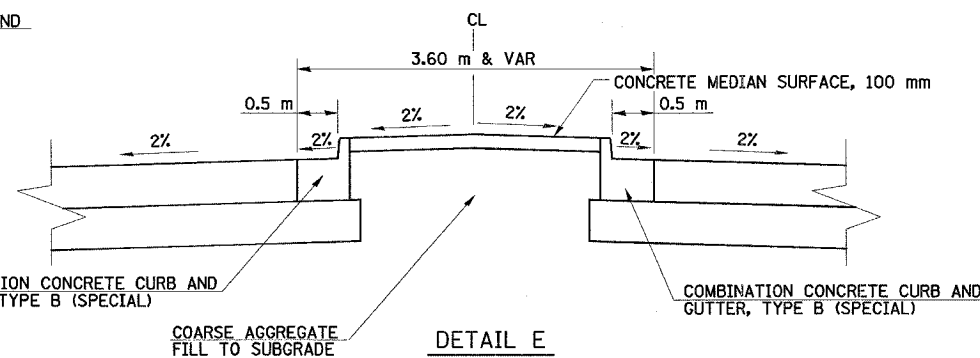
NOTES:

RAILROAD OMISSION STA 90+956.037 TO STA 90+966.115.

SEE CROSS SECTIONS FOR ACTUAL SIDEWALK WIDTHS AND SLOPES.

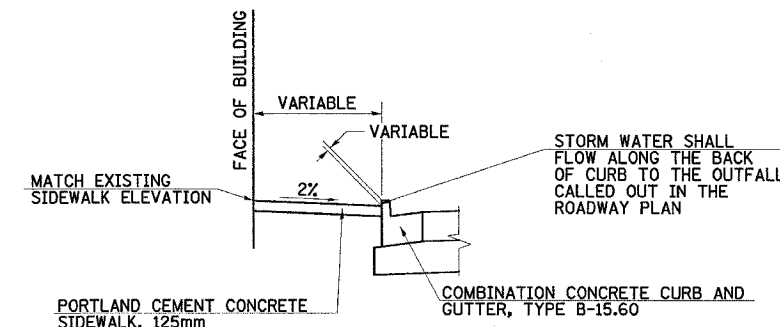
SEE DETAILS A THRU D FOR SPECIAL CONDITIONS ON CURB AND SIDEWALK.

SEE DETAIL E FOR MEDIAN AT RAILROAD CROSSING.



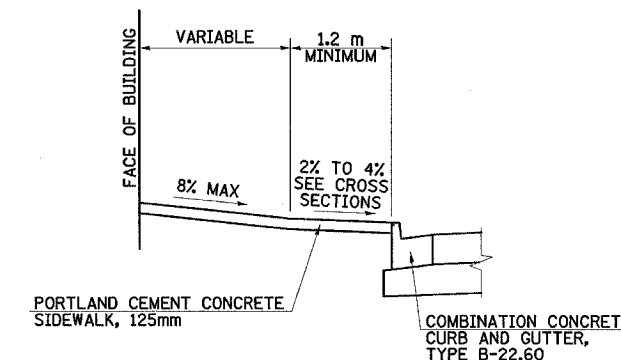
DETAIL E

STA 90+944.830 TO STA 90+956.037
STA 90+966.115 TO STA 90+981.338



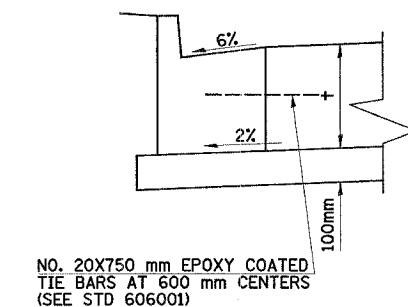
DETAIL C

LT STA 91+262.1 TO STA 91+283.9
LT STA 91+056.5 TO STA 91+068.0



DETAIL D

LT STA 90+674.7 TO STA 90+716.7
RT STA 90+870.7 TO STA 90+892.0
LT STA 91+329.0 TO STA 91+349.0



**DETAIL OF CURB AND GUTTER
ADJACENT TO PCC PAVEMENT (TYP)**

STRUCTURAL DESIGN INFORMATION	
ROAD CLASSIFICATION: CLASS 1	
STRUCTURAL DESIGN TRAFFIC:	
PV= 19,694	SU= 391
PERCENT OF STRUCTURAL DESIGN TRAFFIC IN DESIGN LANE	
P= 32%	S= 45%
MINIMUM SUBGRADE SUPPORT RATING: FAIR	
RIGID PAVEMENT DESIGN: ACTUAL TFF= 3.75	MINIMUM TFF= 6.03
JPCC: 230mm	

**PROPOSED TYPICAL
SECTIONS**