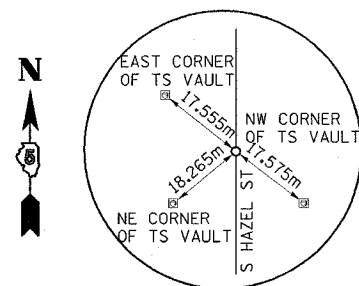
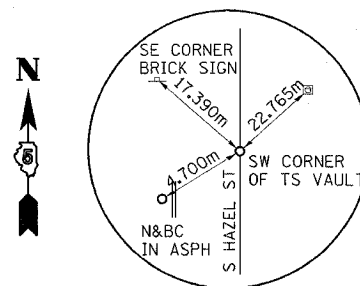


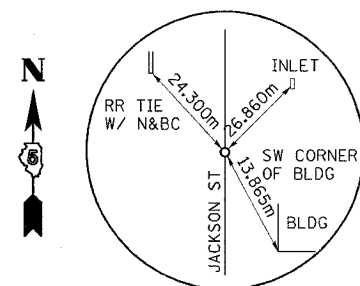
FAP RTE	SECTION	COUNTY	TOTAL SHEETS	SHEET NO.
729	34Z-4	VERMILION	285	33
FED. ROAD DIST. NO.			ILLINOIS FED. AID PROJECT	



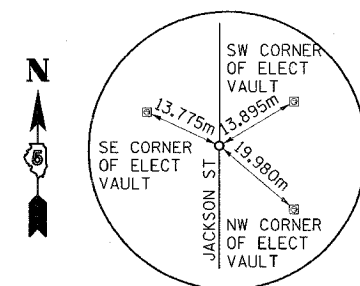
POT STATION 9+000.000 (S HAZEL ST)
N 384063.089, E 360080.477
PK NAIL



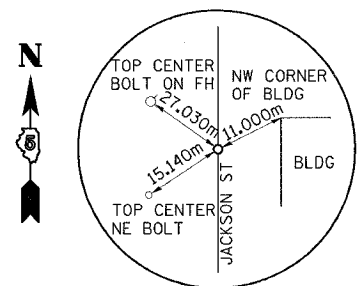
POT STATION 8+965.813 (S HAZEL ST)
N 384028.935, E 360081.998
DRILL HOLE IN CONC



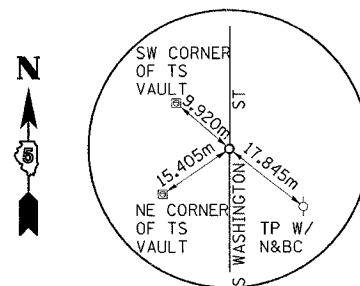
POT STATION 10+458.600 (JACKSON ST)
N 384023.444, E 360211.707
PK NAIL



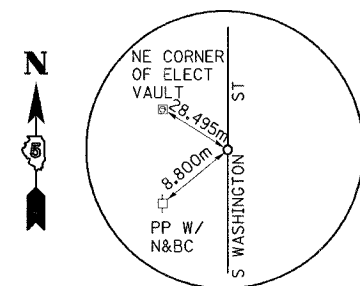
POT STATION 10+500.000 (JACKSON ST)
N 384064.839, E 360211.079
PK NAIL



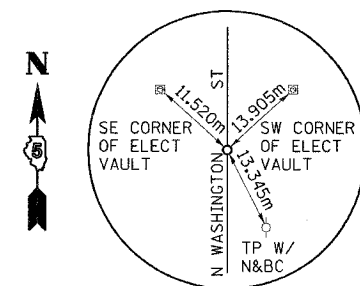
POT STATION 10+591.545 (JACKSON ST)
N 384156.374, E 360209.691
PK NAIL



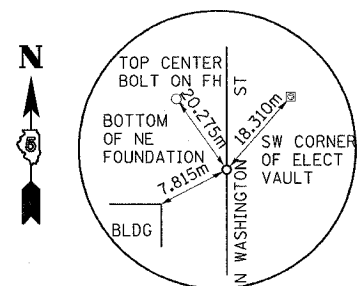
POT STATION 11+000.000 (S WASHINGTON ST)
N 384065.792, E 360282.261
PK NAIL



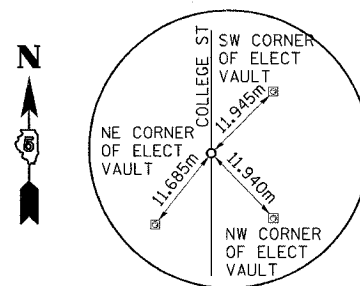
POT STATION 10+957.824 (S WASHINGTON ST)
N 384028.515, E 360262.533
PK NAIL



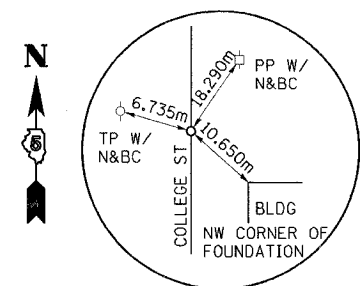
POT STATION 12+000.000 (N WASHINGTON ST)
N 384065.938, E 360293.169
PK NAIL



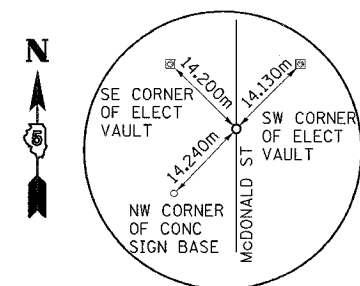
POT STATION 12+095.806 (N WASHINGTON ST)
N 384161.733, E 360291.715
PK NAIL



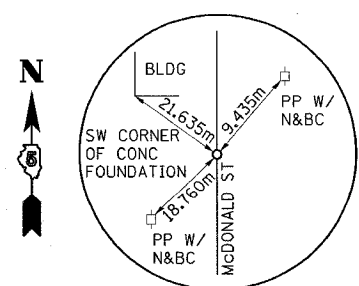
POT STATION 13+000.000 (COLLEGE ST)
N 384066.696, E 360348.425
PK NAIL



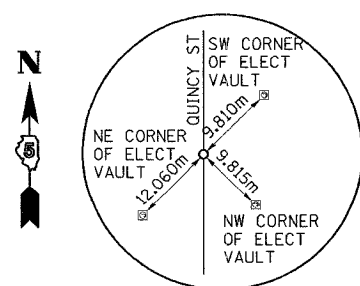
POT STATION 12+912.200 (COLLEGE ST)
N 383978.917, E 360350.341
PK NAIL



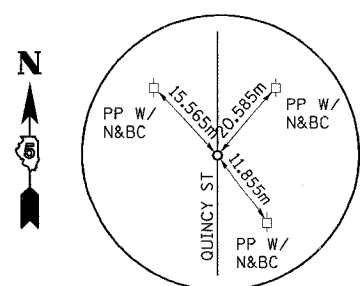
POT STATION 14+000.000 (McDONALD ST)
N 384067.459, E 360397.868
PK NAIL



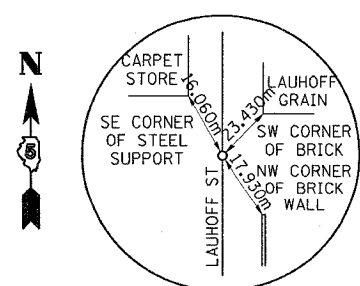
POT STATION 14+091.518 (McDONALD ST)
N 384158.964, E 360396.331
PK NAIL



POT STATION 15+000.000 (QUINCY ST)
N 384068.065, E 360437.126
PK NAIL



POT STATION 14+907.858 (QUINCY ST)
N 383975.944, E 360439.123
PK NAIL



POT STATION 16+000.000 (LAUHOFF ST)
N 384069.090, E 360505.249
PK NAIL

NOTE: ALL COORDINATES ARE GROUND COORDINATES.

SIDESTREET
REFERENCE TIES