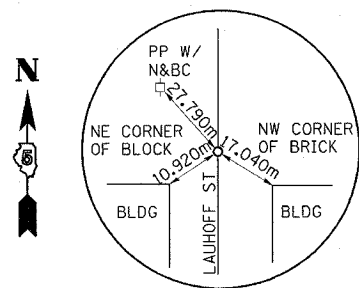
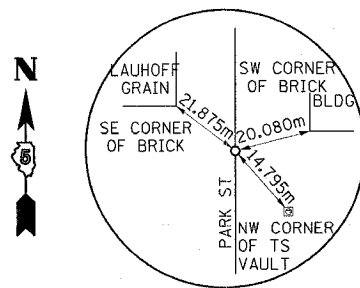


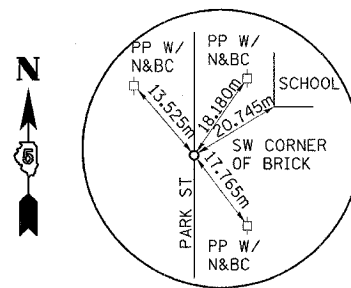
| FAP RTE | SECTION | COUNTY | TOTAL SHEETS | SHEET NO. |
|---------------------|---------|---------------------------|--------------|-----------|
| 729 | 34Z-4 | VERMILION | 285 | 34 |
| FED. ROAD DIST. NO. | | ILLINOIS/FED. AID PROJECT | | |



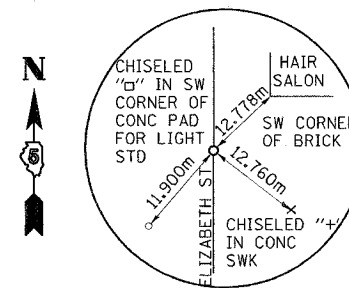
POT STATION 16+073.531 (LAUHOFF ST)
N 384142.611, E 360504.011
PK NAIL



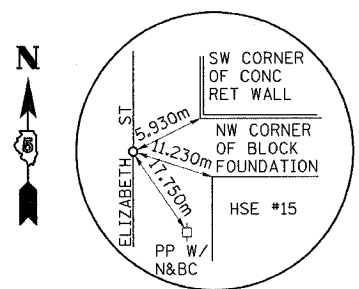
POT STATION 17+000.000 (PARK ST)
N 384069.892, E 360565.840
PK NAIL



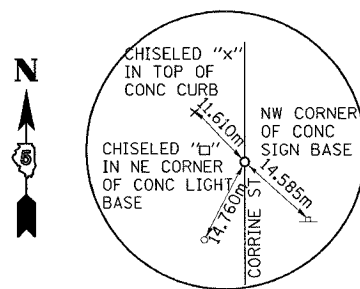
POT STATION 16+922.293 (PARK ST)
N 383992.199, E 360567.358
PK NAIL



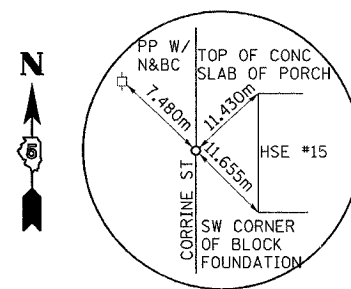
POT STATION 18+000.000 (ELIZABETH ST)
N 384071.400, E 360679.796
PK NAIL



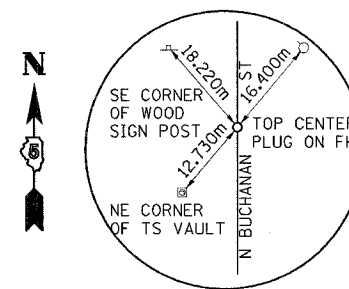
POT STATION 17+901.850 (ELIZABETH ST)
N 383973.280, E 360682.226
PK NAIL



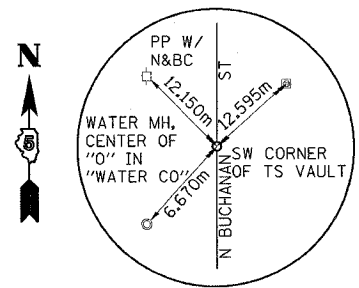
POT STATION 19+000.000 (CORRINE ST)
N 384073.031, E 360806.660
PK NAIL



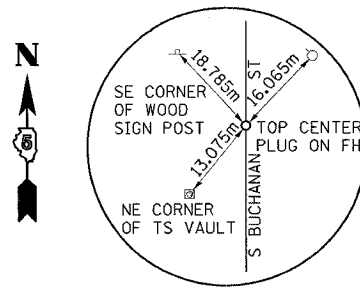
POT STATION 18+907.887 (CORRINE ST)
N 383980.928, E 360808.079
PK NAIL



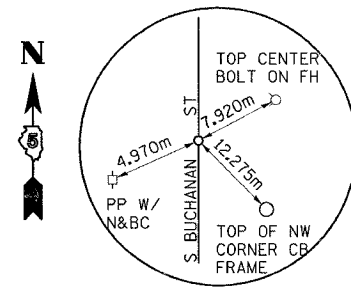
POT STATION 20+000.000 (N BUCHANAN ST)
N 384074.234, E 360903.249
PK NAIL



POT STATION 20+088.942 (N BUCHANAN ST)
N 384163.163, E 360901.749
PK NAIL



POT STATION 21+000.000 (S BUCHANAN ST)
N 384074.244, E 360904.038
PK NAIL



POT STATION 20+908.726 (S BUCHANAN ST)
N 383983.113, E 360909.144
PK NAIL

NOTE: ALL COORDINATES ARE GROUND COORDINATES.

SIDESTREET
REFERENCE TIES