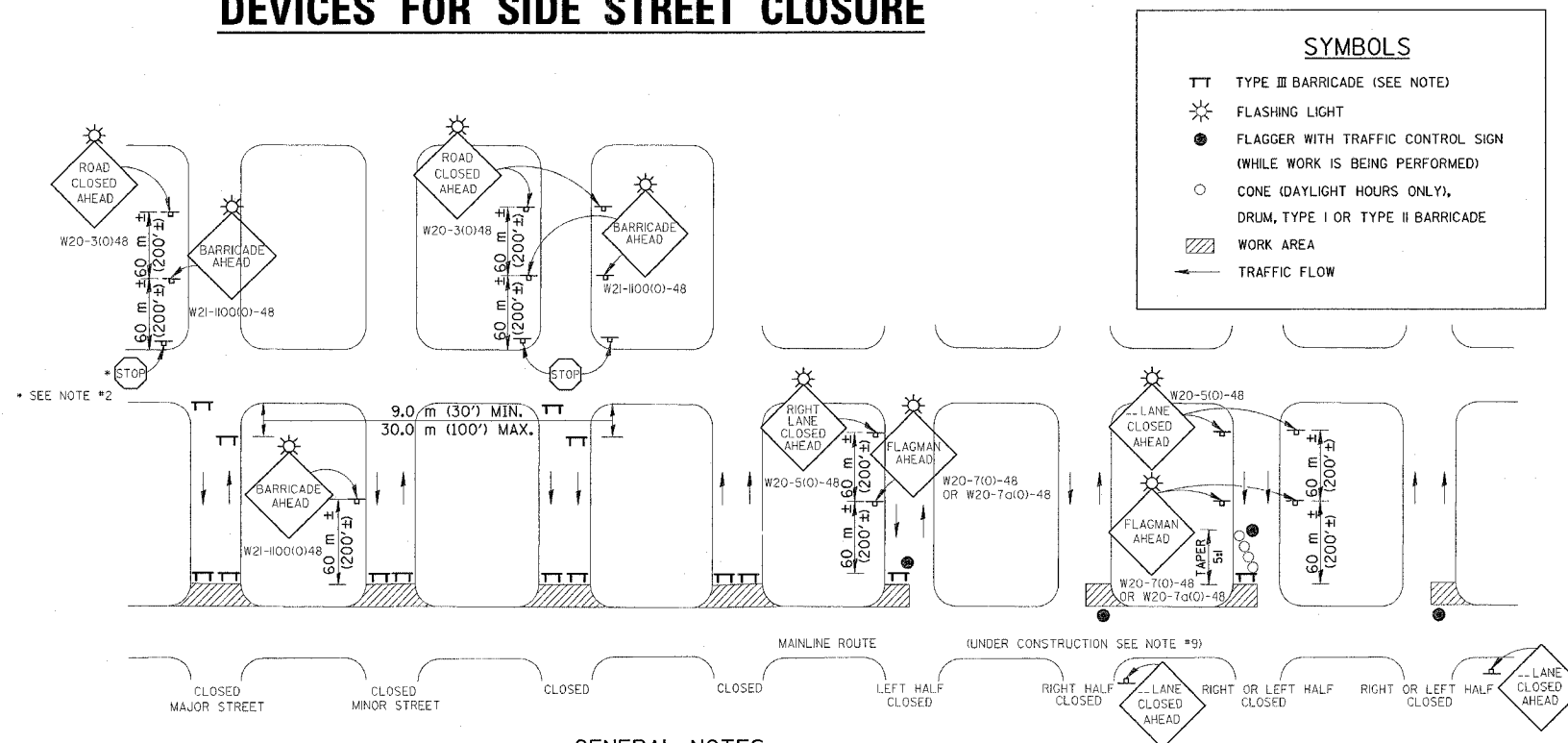


F.A.P. RTE.	SECTION	COUNTY	TOTAL SHEETS	SHEET NO.
729	34Z-4	VERMILION	285	36
STA.		TO STA.		
FED. ROAD DIST. NO.		ILLINOIS FED. AID PROJECT		

TYPICAL APPLICATION OF TRAFFIC CONTROL DEVICES FOR SIDE STREET CLOSURE



GENERAL NOTES

1. TYPE III BARRICADES SHALL BE AS SHOWN ON "TYPICAL APPLICATIONS OF TYPE III BARRICADES CLOSING A ROAD" SIGN STD. 1211-2 OR 1211-4 SHALL BE MOUNTED ON THE BARRICADE. EACH TYPE III BARRICADE SHALL HAVE TWO FLASHING AMBER LIGHTS MOUNTED ABOVE IT.
2. WHERE A STOP CONDITION EXISTS, AS SHOWN ABOVE, WARNING SIGNS MAY BE OMITTED IN ADVANCE OF THE "STOP" SIGN.
3. STANDARD 702001 SHALL APPLY FOR THE PLACEMENT & MANUFACTURE OF TYPE III BARRICADES.
4. ALL SIGNS SHALL BE POST MOUNTED IF THE CLOSURE TIME EXCEEDS FOUR DAYS.
5. ONE FLASHING LIGHT IS REQUIRED ABOVE EACH ADVANCE WARNING SIGN DURING HOURS OF DARKNESS.
6. LONGITUDINAL DIMENSIONS MAY BE ADJUSTED SLIGHTLY TO FIT FIELD CONDITIONS.
7. FORMS BT 725 AND BT 726 ARE REQUIRED.
8. THE MAINLINE ROUTE TEMPORARY TRAFFIC CONTROL SHALL BE IN ACCORDANCE WITH THE PLANS, SPECIAL PROVISIONS AND STANDARD SPECIFICATIONS.
9. THIS WORK WILL NOT BE PAID FOR SEPARATELY BUT SHALL BE CONSIDERED INCLUDED IN THE VARIOUS PAY ITEMS INVOLVING THE RECONSTRUCTION OF ALL APPLICABLE SIDE STREETS AND NO ADDITIONAL COMPENSATION WILL BE ALLOWED.
10. ALL WARNING SIGNS SHALL HAVE MINIMUM DIMENSIONS OF 48 IN. BY 48 IN. AND HAVE BLACK LEGEND AND BORDER ON AN ORANGE REFLECTORIZED BACKGROUND.

All dimensions are in millimeters (inches) unless otherwise shown.

DESIGNED	NAME	DATE
J.H.M.	J.H.M.	8-11-87
CHECKED	P.E.K.	8-25-87
CADD NO.	F-5,04	

REVISIONS	
NAME	DATE
J.M.H.	1-92
D.L.P.	3-96

REVISIONS	
NAME	DATE
D.L.P.	10-96
R.M.H.	12-97

REVISIONS	
NAME	DATE

ILLINOIS DEPARTMENT OF TRANSPORTATION
MAINTENANCE OF TRAFFIC PLANS
U.S. ROUTE 136

SCALE 1:500 DRAWN BY FML
 DATE 5/03 CHECKED BY IYL