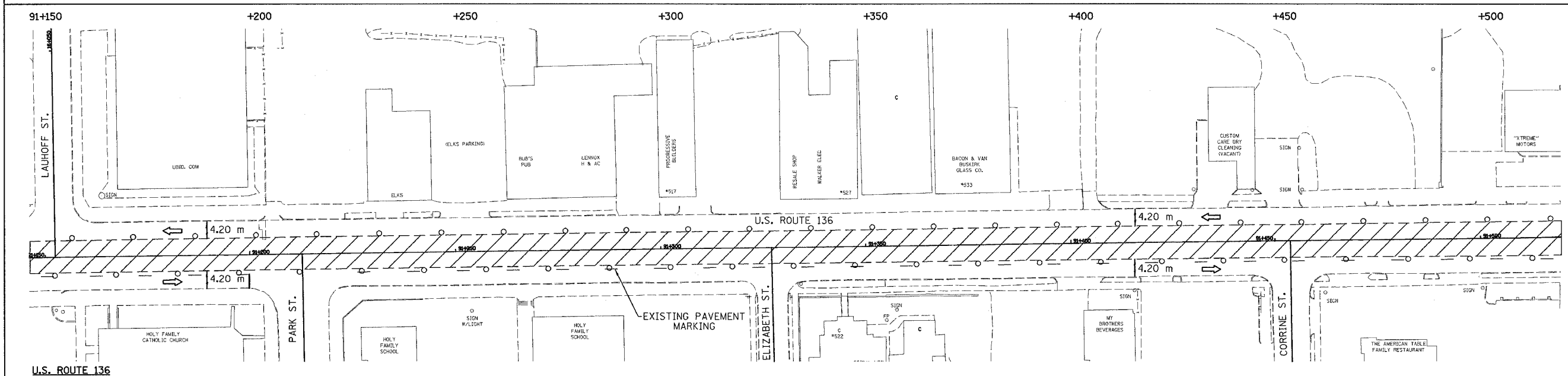
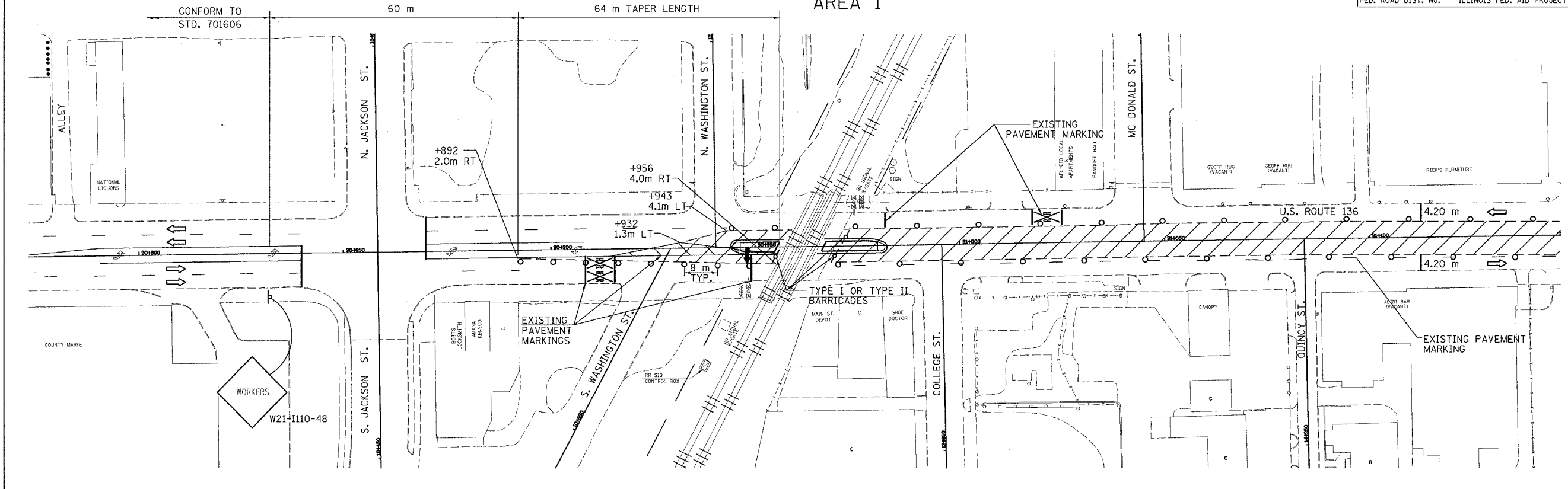
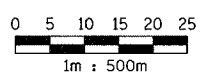


F.A.P. RTE.	SECTION	COUNTY	TOTAL SHEETS	SHEET NO.
729	342-4	VERMILION	285	41
STA. 90+800		TO STA. 91+520		
FED. ROAD DIST. NO.		ILLINOIS FED. AID PROJECT		

SEASON 1 STAGE 1
AREA 1



1. CLOSE PORTIONS OF U.S. ROUTE 136 AS SHOWN IN ACCORDANCE WITH STD. 701602 & 701606.
2. DRUMS SHALL BE PLACED AT 15 m CENTERS.
3. REMOVE EXISTING PAVEMENT MARKINGS AS REQUIRED.
4. ALL SIDEROAD CLOSURES SHALL CONFORM TO DISTRICT 5 SPECIFICATIONS. ALL SIDEROADS ADJOINING TO PARTIALLY CLOSED U.S. ROUTE 136 SHALL CONFORM TO STD. 701606.
5. CONSTRUCTION ZONE SPEED LIMIT SHALL BE 20 MPH.



LEGEND	
	WORK AREA
	CONE OR BARRICADE WITH LIGHT
	ARROW BOARD
	DIRECTION OF TRAFFIC
	TYPE III BARRICADE WITH FLASHING LIGHT
	BARRICADE WITH FLASHING LIGHT
	SIGN ON PORTABLE SUPPORT

REVISIONS	
NAME	DATE

ILLINOIS DEPARTMENT OF TRANSPORTATION
MAINTENANCE OF TRAFFIC PLANS
U.S. ROUTE 136

SCALE 1:500
 DATE 5/03

DRAWN BY FML
 CHECKED BY IYL