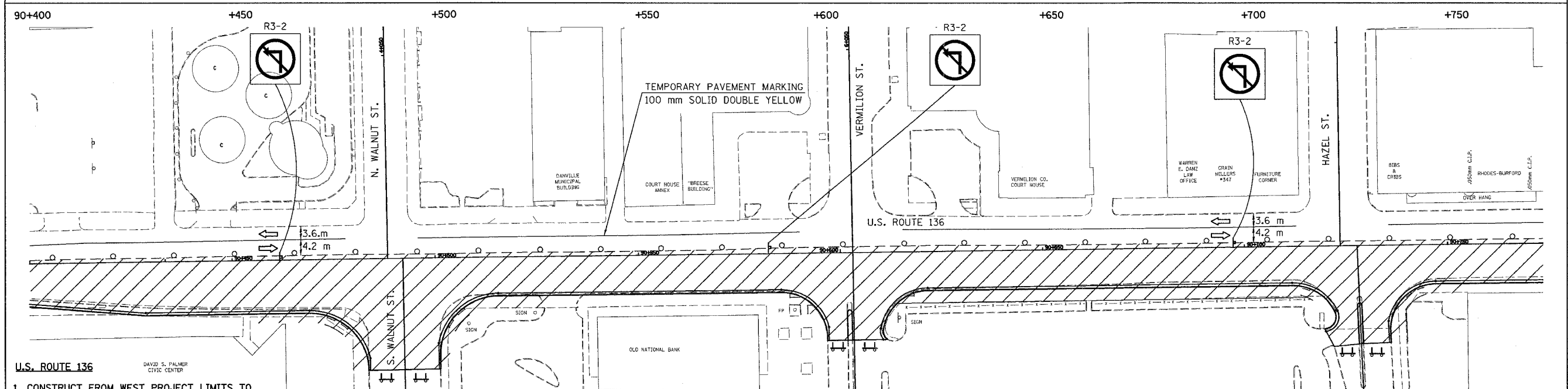
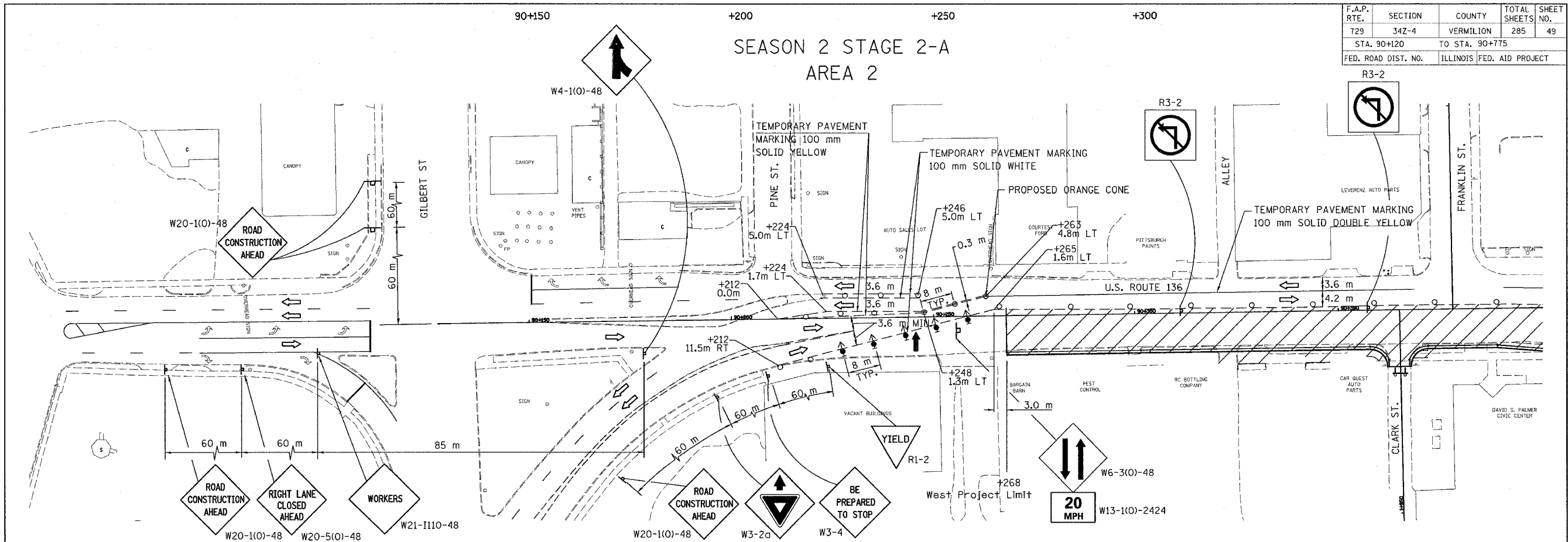


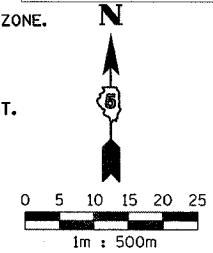
F.A.P. RTE.	SECTION	COUNTY	TOTAL SHEETS	SHEET NO.
729	342-4	VERMILION	285	49
STA. 90+120		TO STA. 90+775		
FED. ROAD DIST. NO.		ILLINOIS FED. AID PROJECT		

SEASON 2 STAGE 2-A
AREA 2



1. CONSTRUCT FROM WEST PROJECT LIMITS TO WEST END OF FRANKLIN ST. ENTRANCE.
2. CLOSE PORTIONS OF U.S. ROUTE 136 AS SHOWN IN ACCORDANCE WITH STD. 701602 & 701606.
3. DRUMS SHALL BE PLACED AT 15 m CENTERS.
4. REMOVE EXISTING PAVEMENT MARKINGS AS REQUIRED.
5. ALL SIDEROAD CLOSURES SHALL CONFORM TO DISTRICT 5 SPECIFICATIONS. ALL SIDEROADS ADJOINING TO PARTIALLY CLOSED U.S. ROUTE 136 SHALL CONFORM TO STD. 701606.
6. CONSTRUCTION ZONE SPEED LIMIT SHALL BE 20 MPH.

7. ALL LEFT TURNS PROHIBITED THROUGHOUT WORK ZONE.
8. IF SEASONS 1 & 2 ARE TO BE PERFORMED CONCURRENTLY, PARK ST. AND S. WALNUT ST. SHALL REMAIN OPEN AT THE SAME TIME.
9. DURING S. WALNUT ST. CLOSURE, S. VERMILION ST. SHALL BE OPEN TO PROVIDE MALL ACCESS.



LEGEND

	ORANGE CONE		DIRECTION INDICATOR BARRICADE WITH STEADY BURN MONODIRECTIONAL LIGHT
	WORK AREA		TYPE III BARRICADE WITH FLASHING LIGHT
	CONE OR BARRICADE WITH LIGHT		BARRICADE WITH FLASHING LIGHT
	ARROW BOARD		SIGN ON PORTABLE SUPPORT
	DIRECTION OF TRAFFIC		MEDIAN REMOVAL AREA

REVISIONS	
NAME	DATE

ILLINOIS DEPARTMENT OF TRANSPORTATION
MAINTENANCE OF TRAFFIC PLANS
U.S. ROUTE 136

SCALE 1:500
 DATE 5/03

DRAWN BY FML
 CHECKED BY IYL