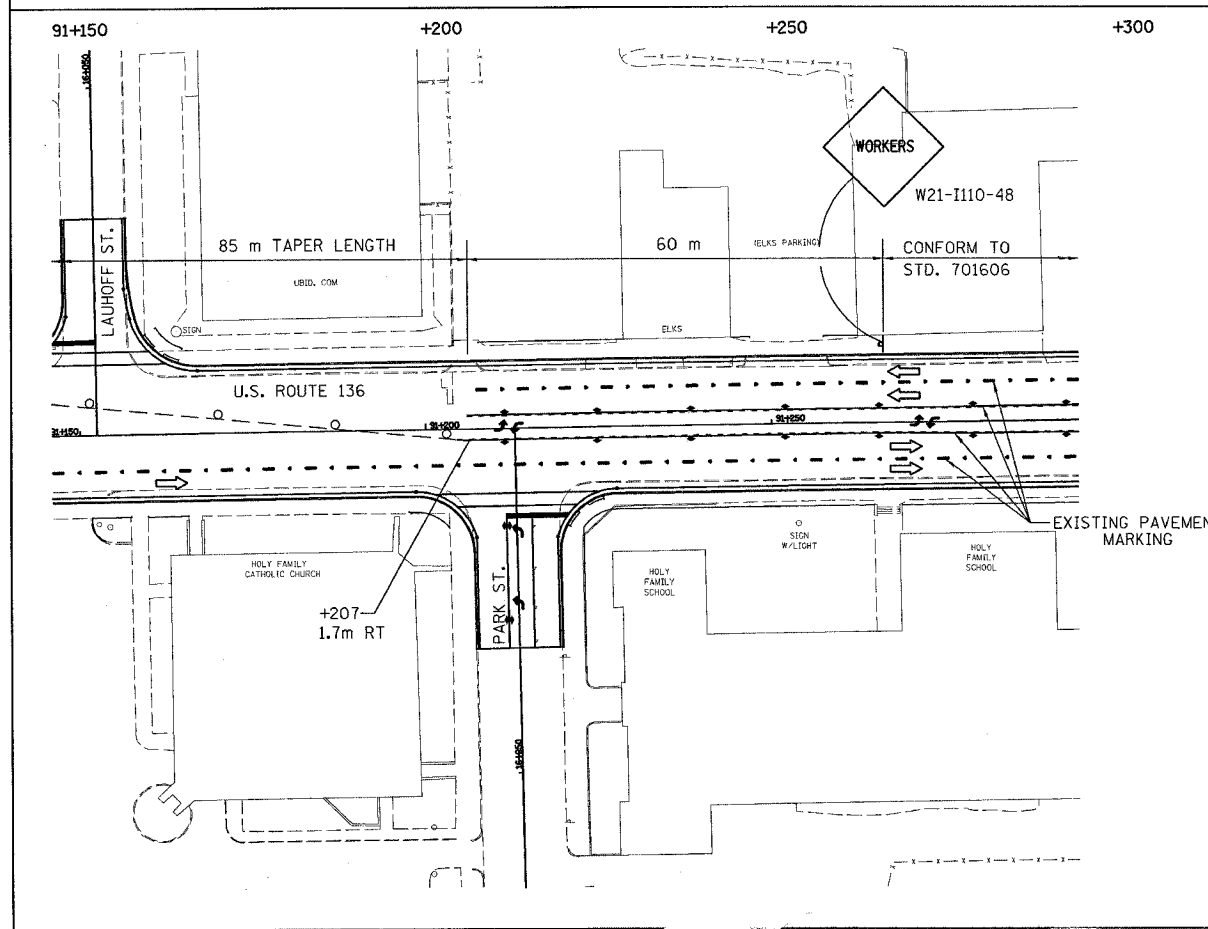
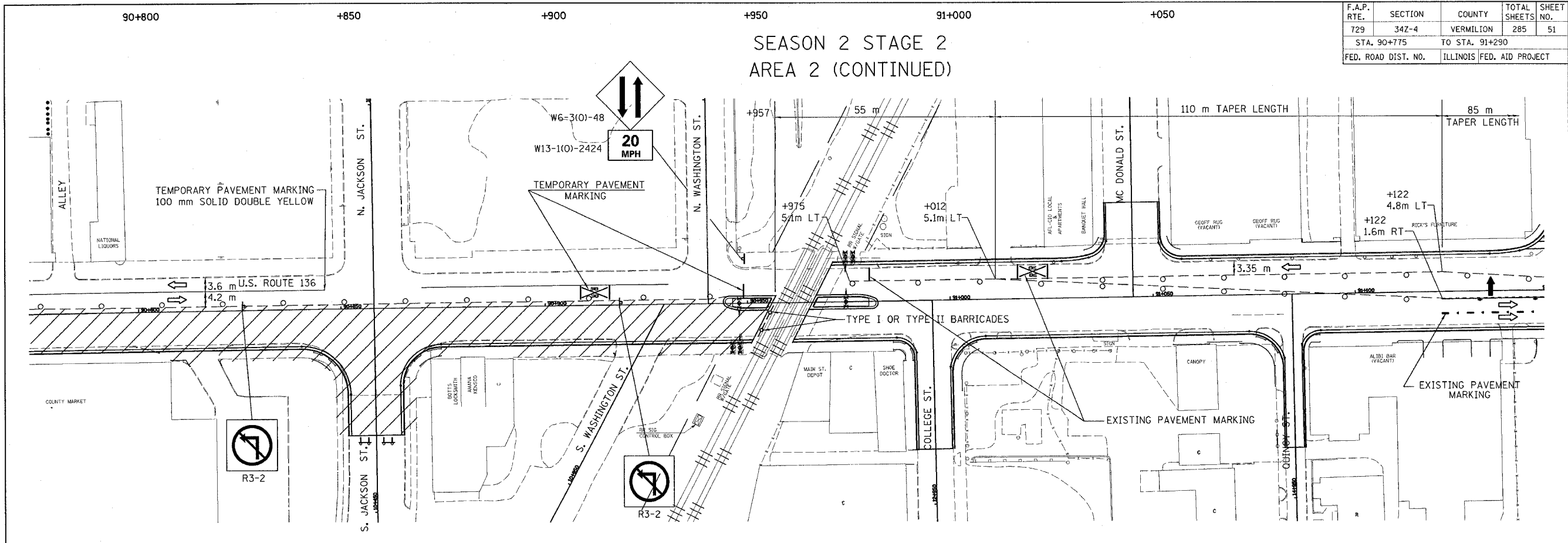


F.A.P. RTE.	SECTION	COUNTY	TOTAL SHEETS	SHEET NO.
729	342-4	VERMILION	285	51
STA. 90+775		TO STA. 91+290		
FED. ROAD DIST. NO.	ILLINOIS	FED. AID PROJECT		

SEASON 2 STAGE 2  
AREA 2 (CONTINUED)

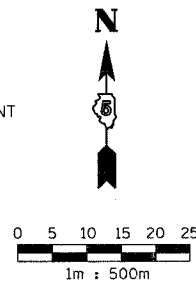


SIDE ROAD CLOSURE PATTERNS

- |                           |                             |
|---------------------------|-----------------------------|
| 1. CLARK ST. CLOSED       | 1. CLARK ST. OPEN           |
| 2. WALNUT ST. OPEN        | 2. WALNUT ST. CLOSED        |
| 3. VERMILION ST. CLOSED   | 3. VERMILION ST. OPEN       |
| 4. HAZEL ST. OPEN         | 4. HAZEL ST. CLOSED         |
| 5. S. JACKSON ST. CLOSED  | 5. S. JACKSON ST. OPEN      |
| 6. S. WASHINGTON ST. OPEN | 6. S. WASHINGTON ST. CLOSED |

U.S. ROUTE 136

- CLOSE PORTIONS OF U.S. ROUTE 136 AS SHOWN IN ACCORDANCE WITH STD. 701606.
- DRUMS SHALL BE PLACED AT 15 m CENTERS.
- REMOVE EXISTING PAVEMENT MARKINGS AS REQUIRED.
- ALL SIDEROAD CLOSURES SHALL CONFORM TO DISTRICT 5 SPECIFICATIONS. ALL SIDEROADS ADJOINING TO PARTIALLY CLOSED U.S. ROUTE 136 SHALL CONFORM TO STD. 701606.
- CONSTRUCTION ZONE SPEED LIMIT SHALL BE 20 MPH.
- ALL LEFT TURNS ARE PROHIBITED THROUGHOUT THE WORK ZONE.
- IF SEASONS 1 & 2 ARE TO BE PERFORMED CONCURRENTLY, S. BUCHANAN ST. AND S. JACKSON ST. SHALL REMAIN OPEN AT THE SAME TIME.



LEGEND	
	WORK AREA
	CONE OR BARRICADE WITH LIGHT
	ARROW BOARD
	DIRECTION OF TRAFFIC
	TYPE III BARRICADE WITH FLASHING LIGHT
	BARRICADE WITH FLASHING LIGHT
	SIGN ON PORTABLE SUPPORT

REVISIONS		ILLINOIS DEPARTMENT OF TRANSPORTATION MAINTENANCE OF TRAFFIC PLANS U.S. ROUTE 136
NAME	DATE	
		SCALE 1:500
		DATE 5/03
		DRAWN BY FML
		CHECKED BY IYL