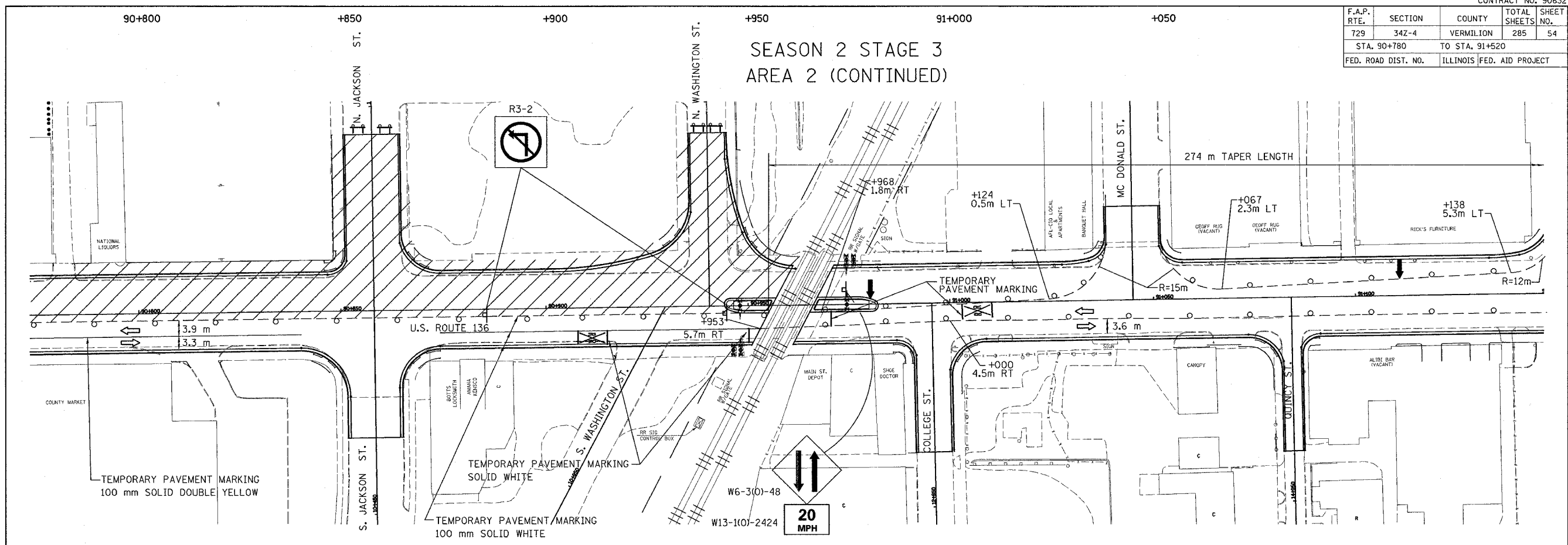


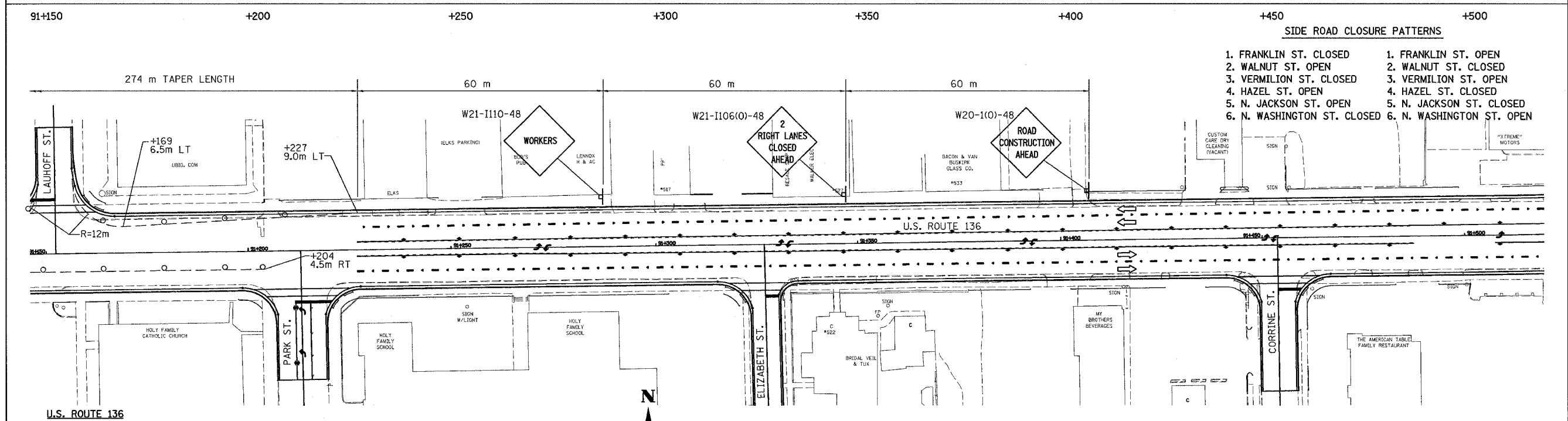
F.A.P. RTE.	SECTION	COUNTY	TOTAL SHEETS	SHEET NO.
729	34Z-4	VERMILION	285	54
STA. 90+780		TO STA. 91+520		
FED. ROAD DIST. NO.		ILLINOIS FED. AID PROJECT		

SEASON 2 STAGE 3
AREA 2 (CONTINUED)



SIDE ROAD CLOSURE PATTERNS

- | | |
|-----------------------------|---------------------------|
| 1. FRANKLIN ST. CLOSED | 1. FRANKLIN ST. OPEN |
| 2. WALNUT ST. OPEN | 2. WALNUT ST. CLOSED |
| 3. VERMILION ST. CLOSED | 3. VERMILION ST. OPEN |
| 4. HAZEL ST. OPEN | 4. HAZEL ST. CLOSED |
| 5. N. JACKSON ST. OPEN | 5. N. JACKSON ST. CLOSED |
| 6. N. WASHINGTON ST. CLOSED | 6. N. WASHINGTON ST. OPEN |



- U.S. ROUTE 136**
- CLOSE PORTIONS OF U.S. ROUTE 136 AS SHOWN IN ACCORDANCE WITH STD. 701606.
 - DRUMS SHALL BE PLACED AT 15 m CENTERS.
 - REMOVE EXISTING PAVEMENT MARKINGS AS REQUIRED.
 - ALL SIDEROAD CLOSURES SHALL CONFORM TO DISTRICT 5 SPECIFICATIONS. ALL SIDEROADS ADJOINING TO PARTIALLY CLOSED U.S. ROUTE 136 SHALL CONFORM TO STD. 701606.
 - CONSTRUCTION ZONE SPEED LIMIT SHALL BE 20 MPH.
 - ALL LEFT TURNS ARE PROHIBITED THROUGHOUT THE WORK ZONE.
 - N. WALNUT ST. & N. JACKSON ST. SHALL BE OPEN AT THE SAME TIME.

LEGEND

	WORK AREA		TYPE III BARRICADE WITH FLASHING LIGHT
	CONE OR BARRICADE WITH LIGHT		BARRICADE WITH FLASHING LIGHT
	ARROW BOARD		SIGN ON PORTABLE SUPPORT
	DIRECTION OF TRAFFIC		

REVISIONS	
NAME	DATE

ILLINOIS DEPARTMENT OF TRANSPORTATION
MAINTENANCE OF TRAFFIC PLANS
U.S. ROUTE 136

SCALE 1:500
DATE 5/03

DRAWN BY FML
CHECKED BY IYL