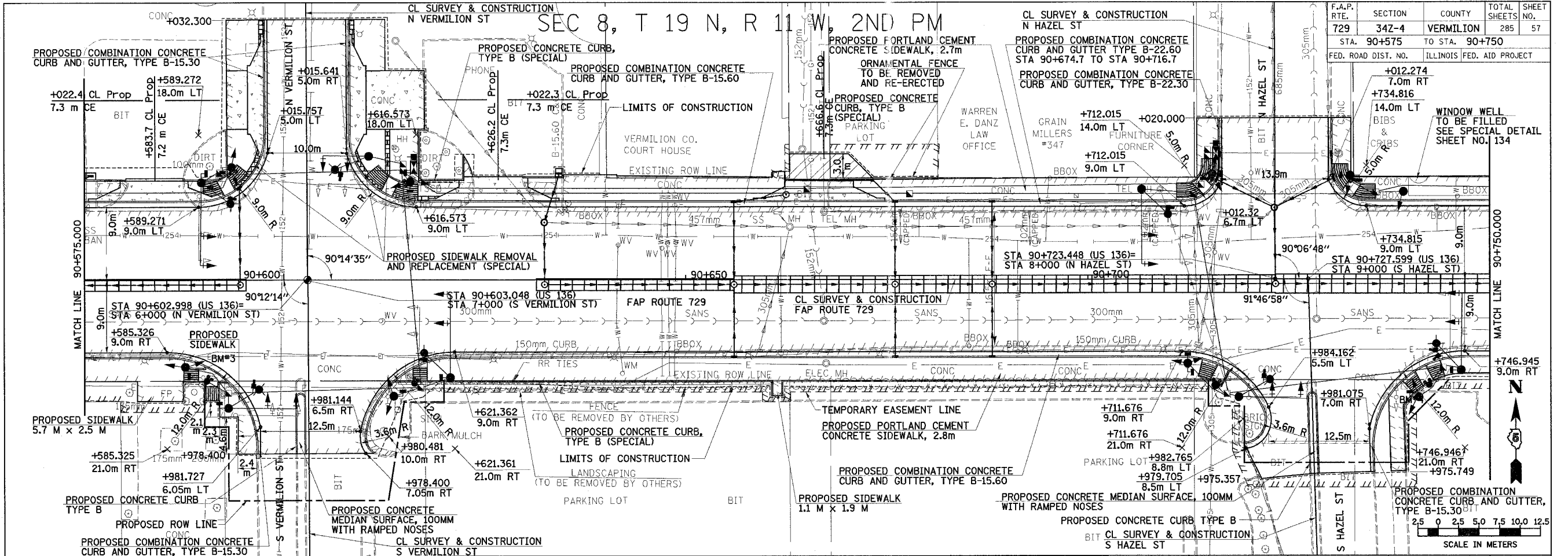


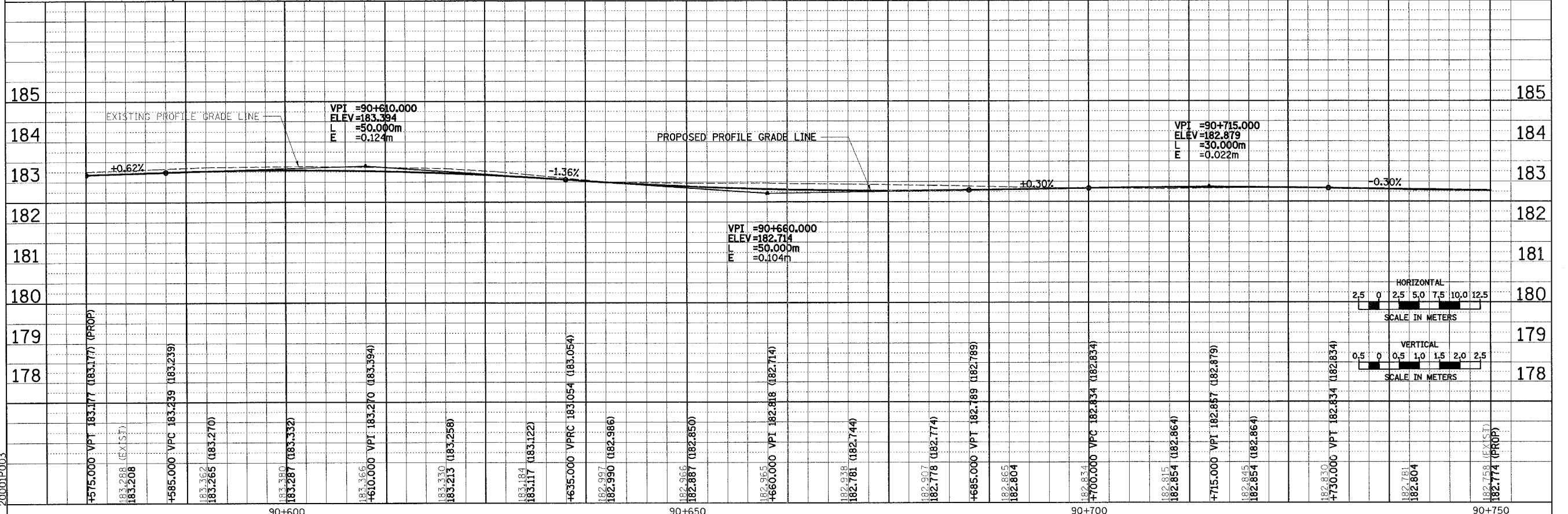
F.A.P. RTE.	SECTION	COUNTY	TOTAL SHEETS	SHEET NO.
729	342-4	VERMILION	285	57
STA. 90+575 TO STA. 90+750				
FED. ROAD DIST. NO. ILLINOIS FED. AID PROJECT				

SEC 8, T 19 N, R 11 W, 2ND PM

BY	DATE
FINAL SURVEY PLOTTED	
NOTE BOOK TEMPLATE	
AREAS CHECKED	
NO.	



BY	DATE
ORIGINAL SURVEY PLOTTED	
NOTE BOOK TEMPLATE	
AREAS CHECKED	
NO.	



ROADWAY PLAN & PROFILE, FAP 729 (US136) STA 90+575 TO STA 90+750