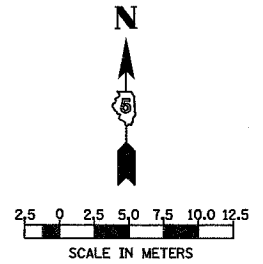
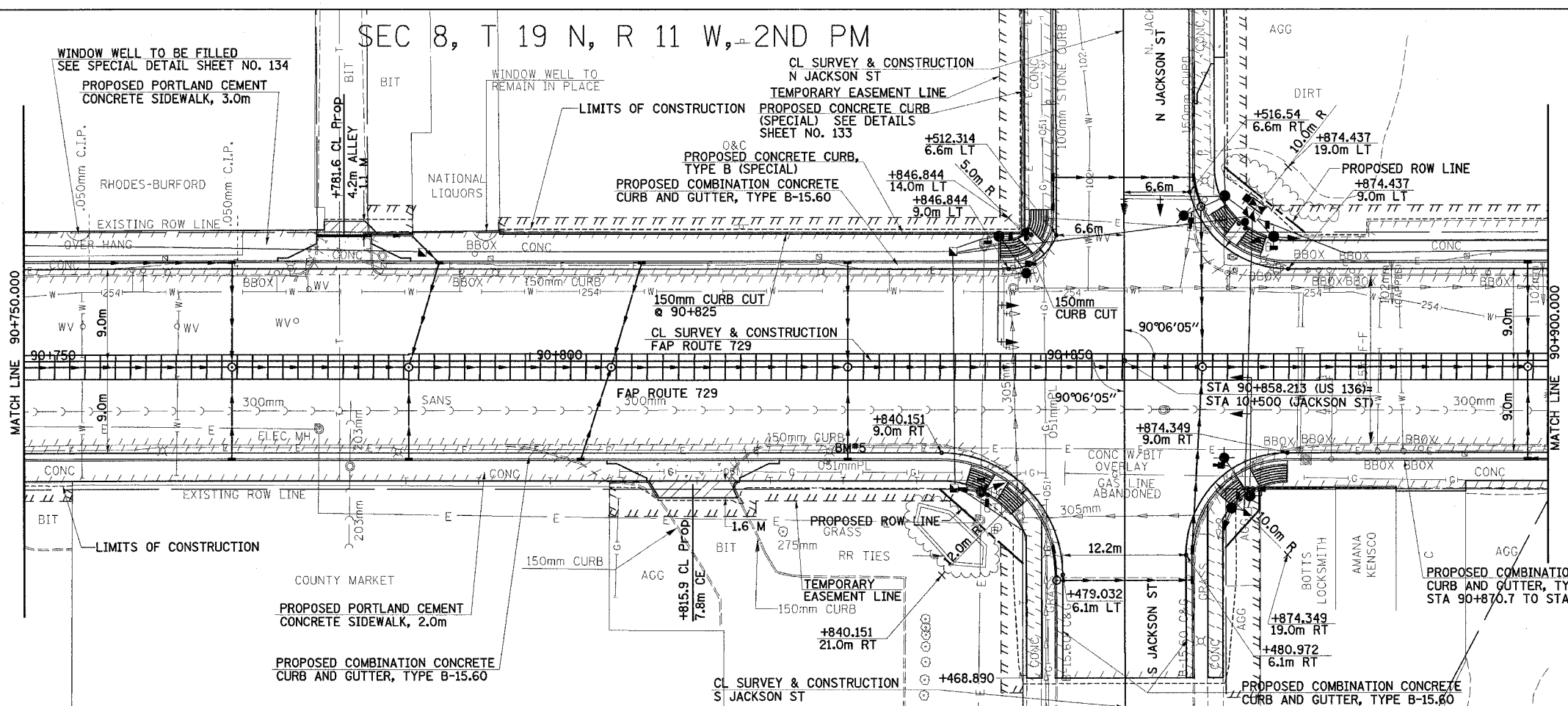


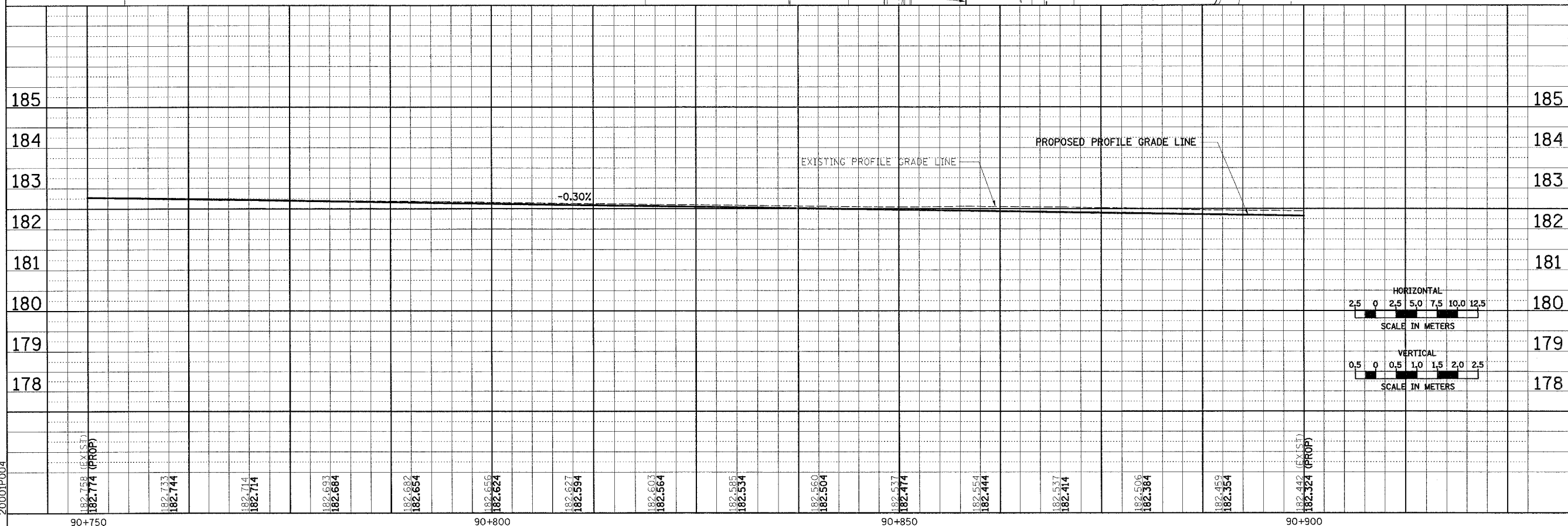
F.A.P. RTE.	SECTION	COUNTY	TOTAL SHEETS	SHEET NO.
729	342-4	VERMILION	285	58
STA. 90+750		TO STA. 90+900		
FED. ROAD DIST. NO.		ILLINOIS FED. AID PROJECT		

SEC 8, T 19 N, R 11 W, 2ND PM

FINAL SURVEY PLOTTED	BY	DATE
NOTE BOOK TEMPLATE		
AREAS CHECKED		
NO.		



ORIGINAL SURVEY PLOTTED	BY	DATE
NOTE BOOK TEMPLATE		
AREAS CHECKED		
NO.		



ROADWAY PLAN & PROFILE, FAP 729 (US136) STA 90+750 TO STA 90+900