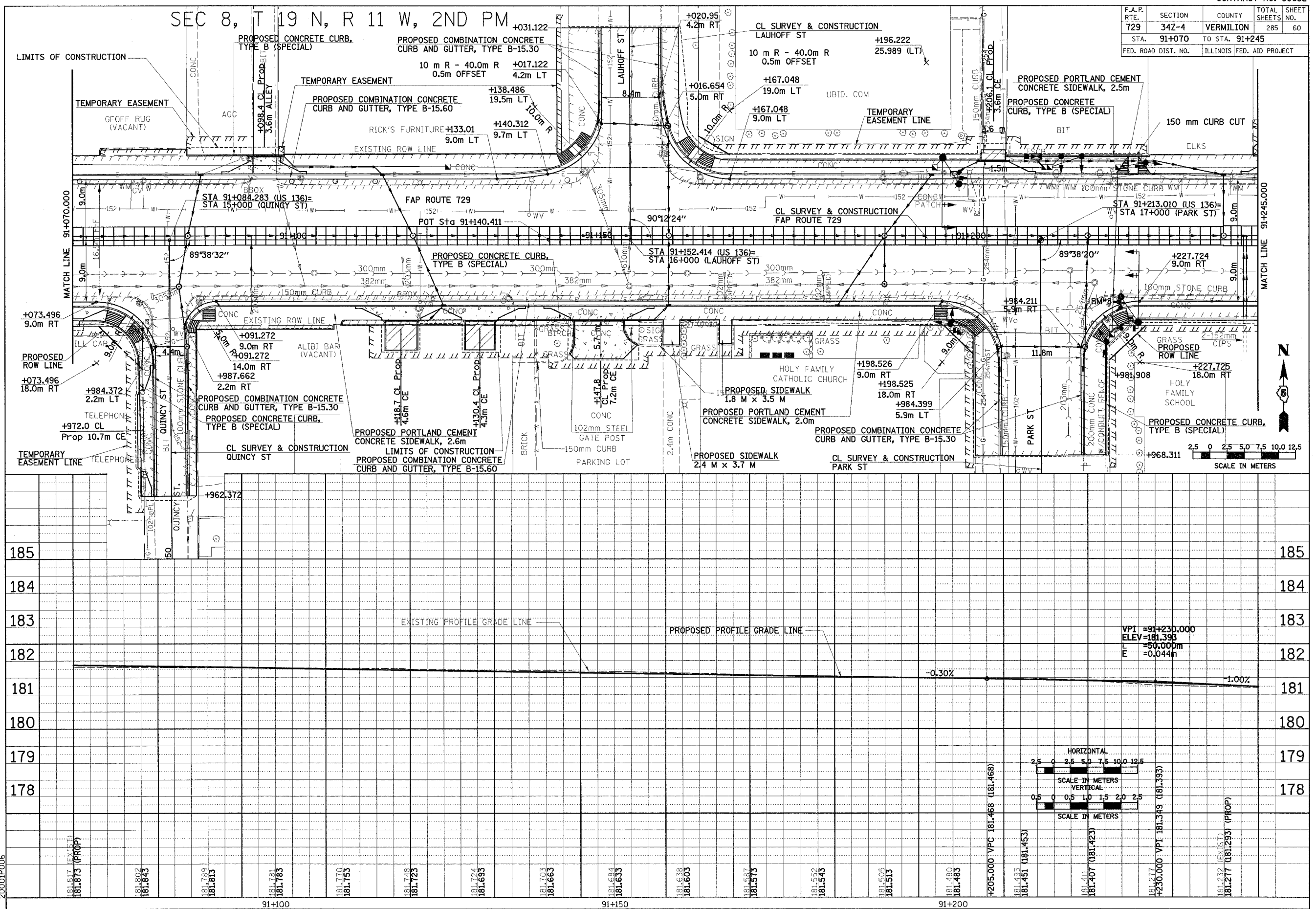


F.A.P. RTE.	SECTION	COUNTY	TOTAL SHEETS	SHEET NO.
729	34Z-4	VERMILION	285	60
STA.	TO STA.			
91+070	91+245			
FED. ROAD DIST. NO.	ILLINOIS FED. AID PROJECT			

SEC 8, T 19 N, R 11 W, 2ND PM

DATE	BY
NO.	NO.
AREAS CHECKED	AREAS CHECKED

DATE	BY
NO.	NO.
AREAS CHECKED	AREAS CHECKED



20001P006

ROADWAY PLAN & PROFILE, FAP 729 (US136) STA 91+070 TO STA 91+245