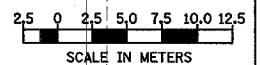
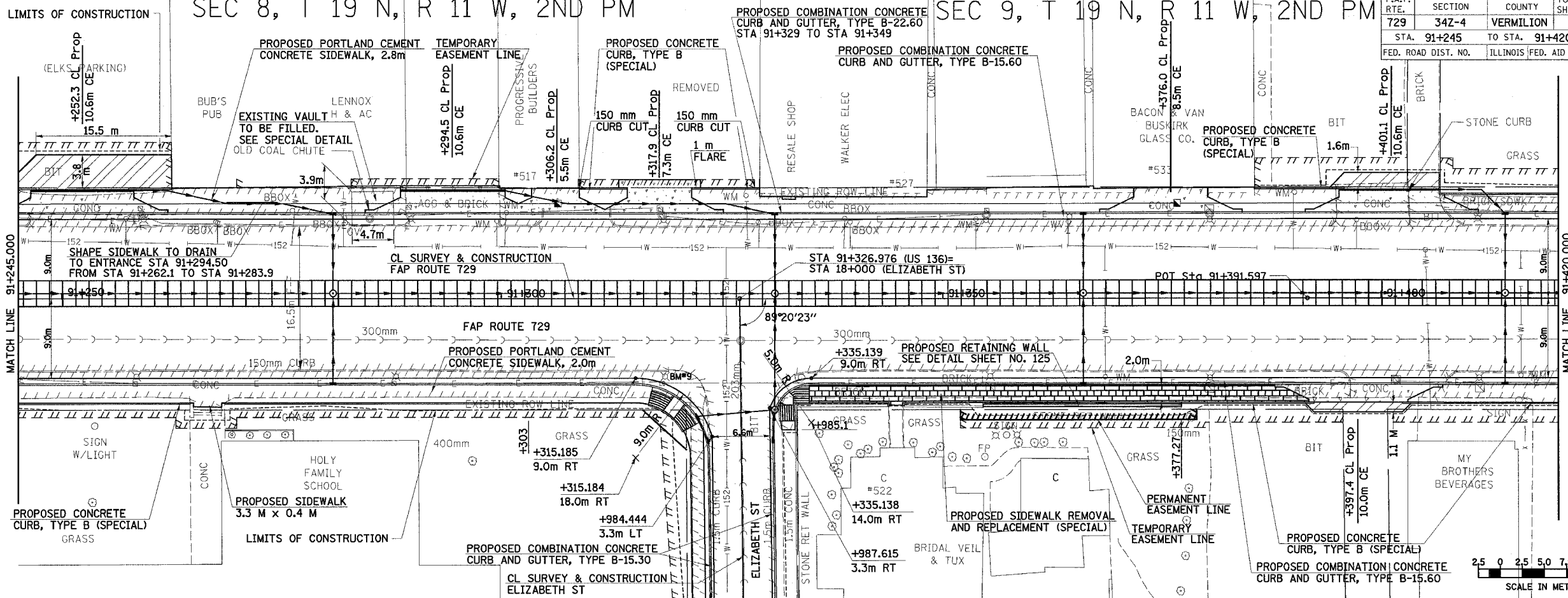


SEC 8, T 19 N, R 11 W, 2ND PM

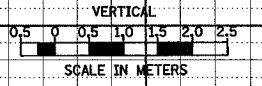
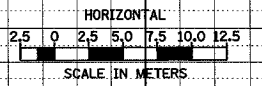
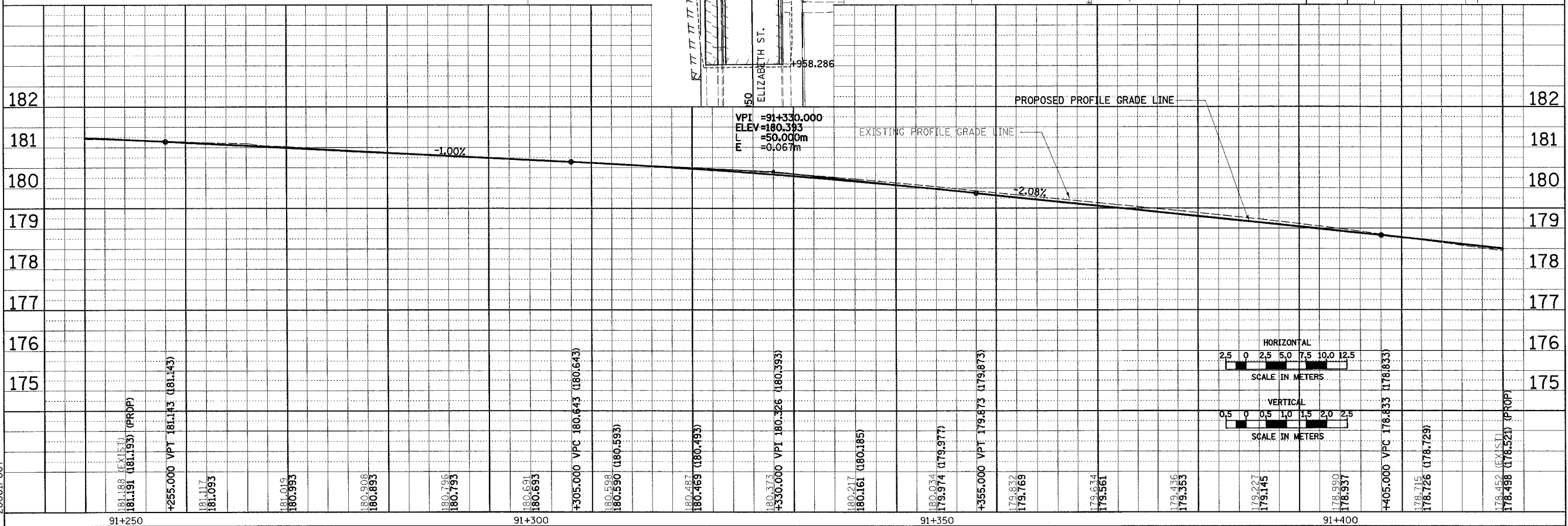
SEC 9, T 19 N, R 11 W, 2ND PM

F.A.P. RTE.	SECTION	COUNTY	TOTAL SHEETS	SHEET NO.
729	34Z-4	VERMILION	285	61
STA. 91+245		TO STA. 91+420		
FED. ROAD DIST. NO.		ILLINOIS FED. AID PROJECT		

BY	DATE
FINAL SURVEYED SURVEY PLOTTED NOTE BOOK TEMPLATE AREAS CHECKED	NO.



BY	DATE
ORIGINAL SURVEYED SURVEY PLOTTED NOTE BOOK TEMPLATE AREAS CHECKED	NO.



2000IP007

ROADWAY PLAN & PROFILE, FAP 729 (US136) STA 91+245 TO STA 91+420