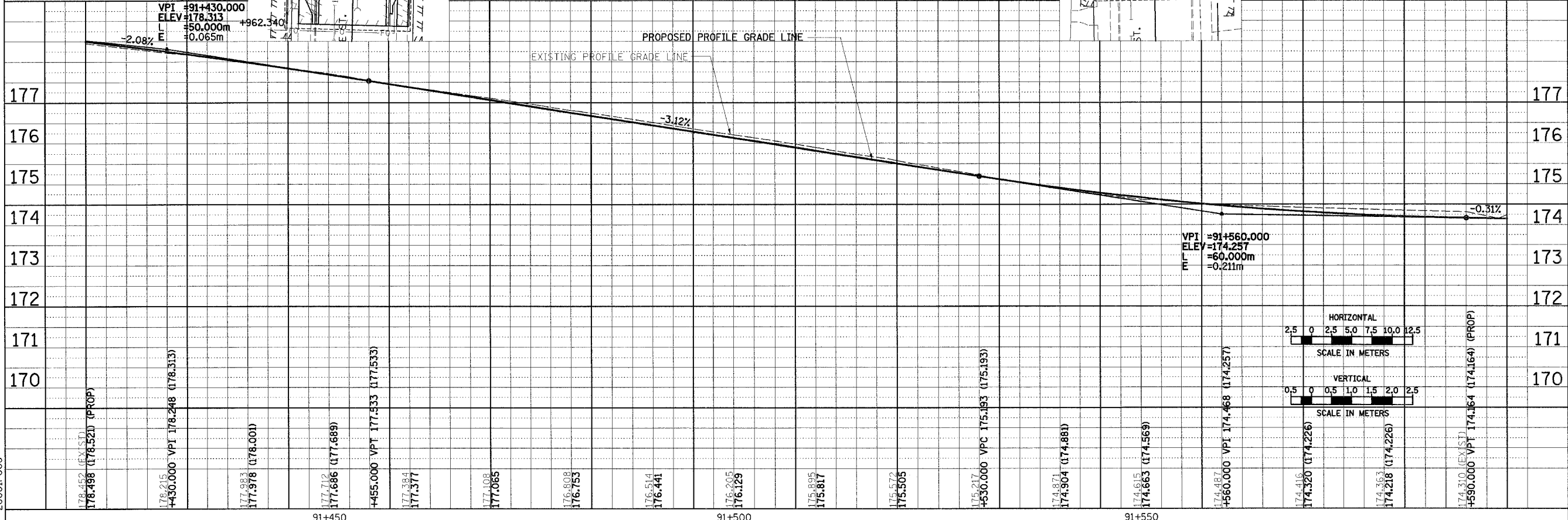
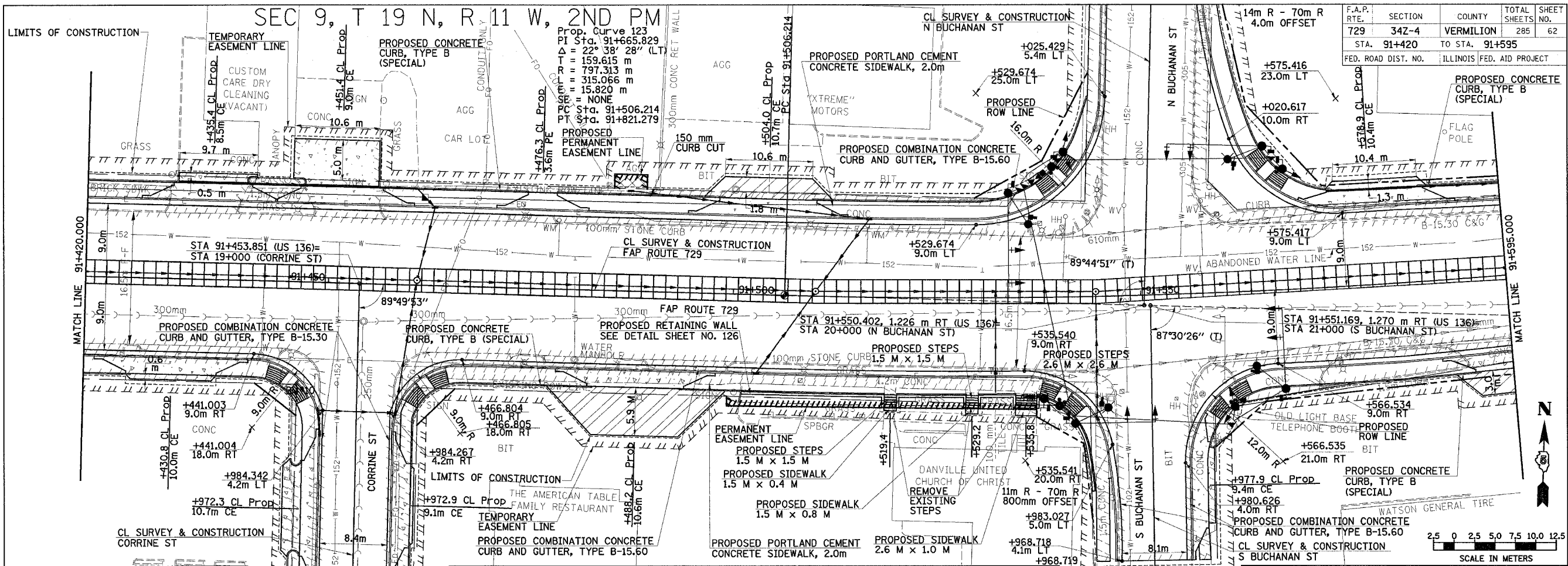


SEC 9, T 19 N, R 11 W, 2ND PM

F.A.P. RTE.	SECTION	COUNTY	TOTAL SHEETS	SHEET NO.
729	342-4	VERMILION	285	62
STA. 91+420 TO STA. 91+595		ILLINOIS FED. AID PROJECT		

BY	DATE
FINAL SURVEY PLOTTED	
NOTE BOOK TEMPLATE	
AREAS CHECKED	
NO.	

BY	DATE
ORIGINAL SURVEY PLOTTED	
NOTE BOOK TEMPLATE	
AREAS CHECKED	
NO.	



ROADWAY PLAN & PROFILE, FAP 729 (US136) STA 91+420 TO STA 91+595