

F.A.P. RTE.	SECTION	COUNTY	TOTAL SHEETS	SHEET NO.
729	342-4	VERMILION	285	69

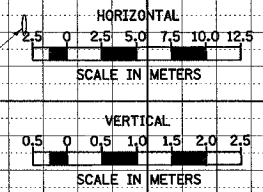
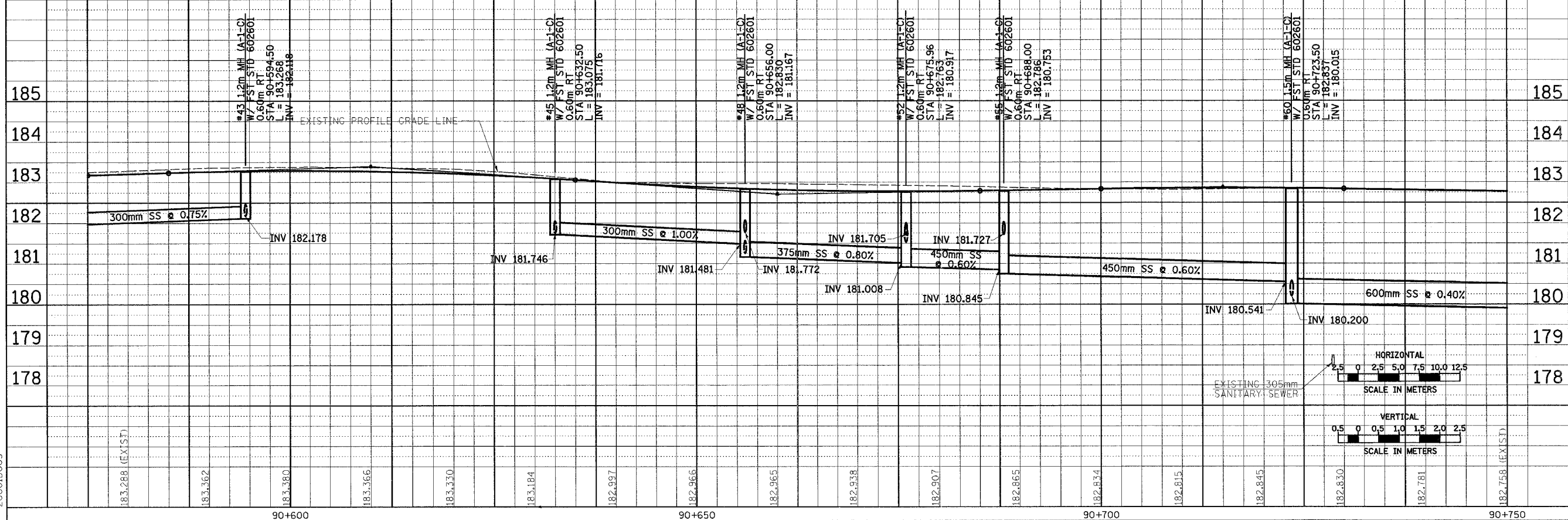
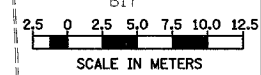
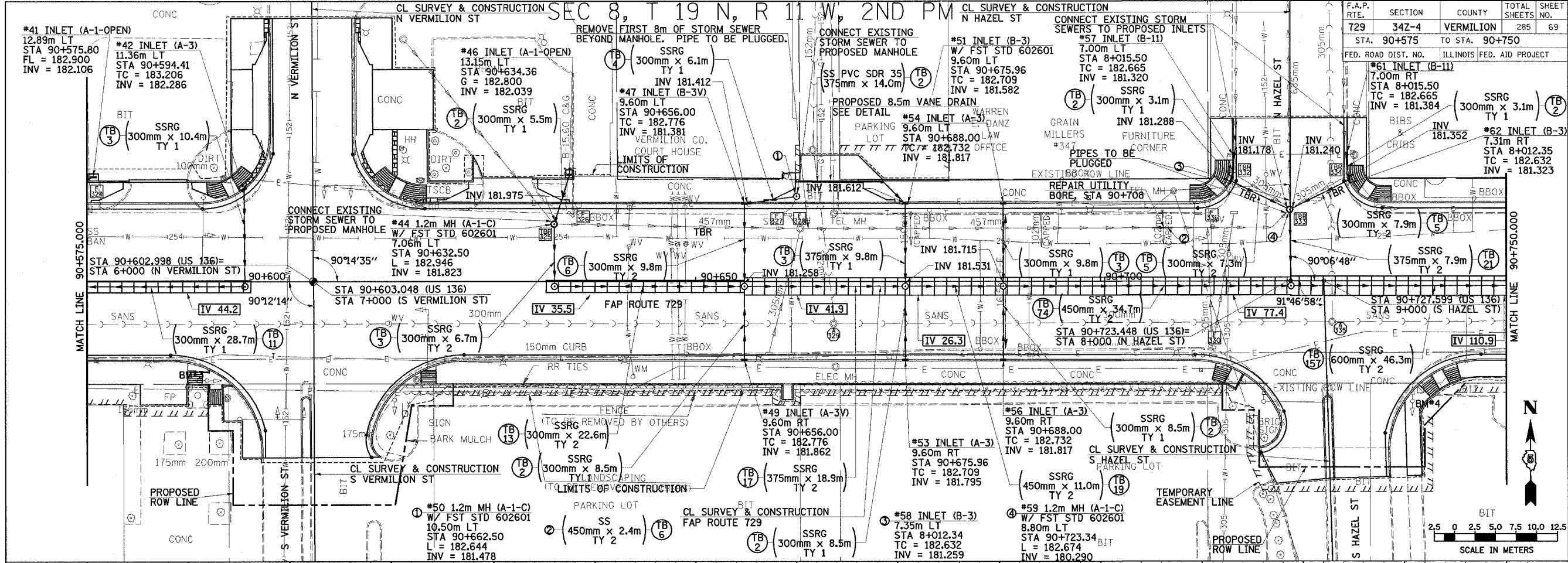
STA. 90+575 TO STA. 90+750
FED. ROAD DIST. NO. ILLINOIS FED. AID PROJECT

BY	DATE

FINAL SURVEY PLOTTED
NOTE BOOK TEMPLATE AREAS CHECKED
NO.

BY	DATE

ORIGINAL SURVEY PLOTTED
NOTE BOOK TEMPLATE AREAS CHECKED
NO.



DRAINAGE PLAN & PROFILE, FAP 729 (US136) STA 90+575 TO STA 90+750

20001D003