

F.A.P. RTE.	SECTION	COUNTY	TOTAL SHEETS	SHEET NO.
729	342-4	VERMILION	285	72

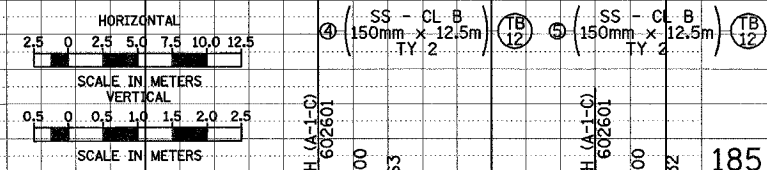
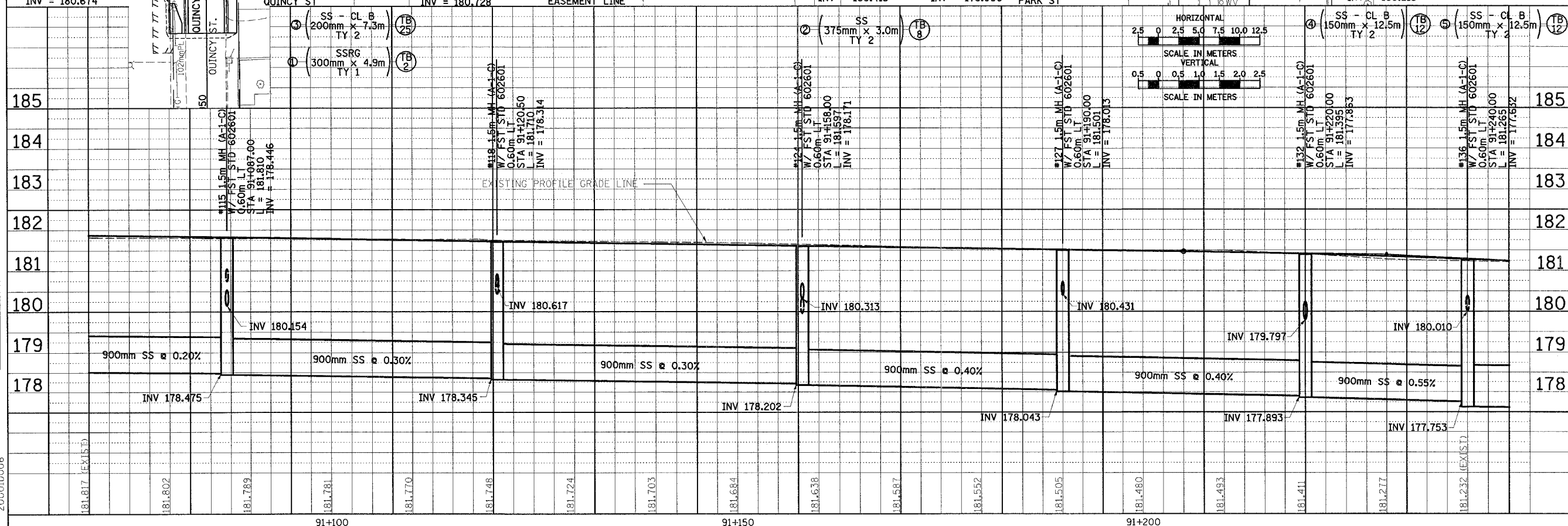
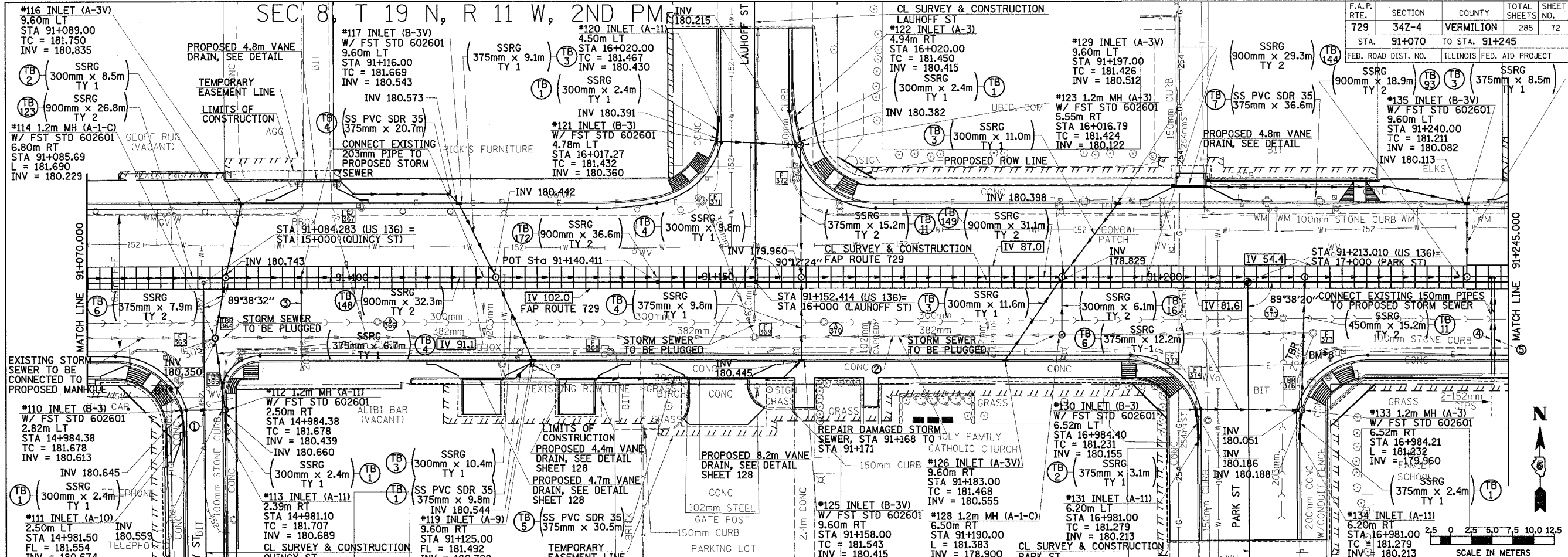
STA.	TO STA.
91+070	91+245

FED. ROAD DIST. NO.	ILLINOIS FED. AID PROJECT
91+070	91+245

SEC 8, T 19 N, R 11 W, 2ND PM

DATE	BY

DATE	BY



20001D006

DRAINAGE PLAN & PROFILE, FAP 729 (US136) STA 91+070 TO STA 91+245