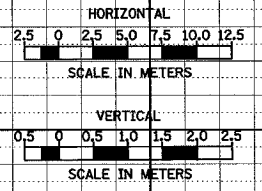
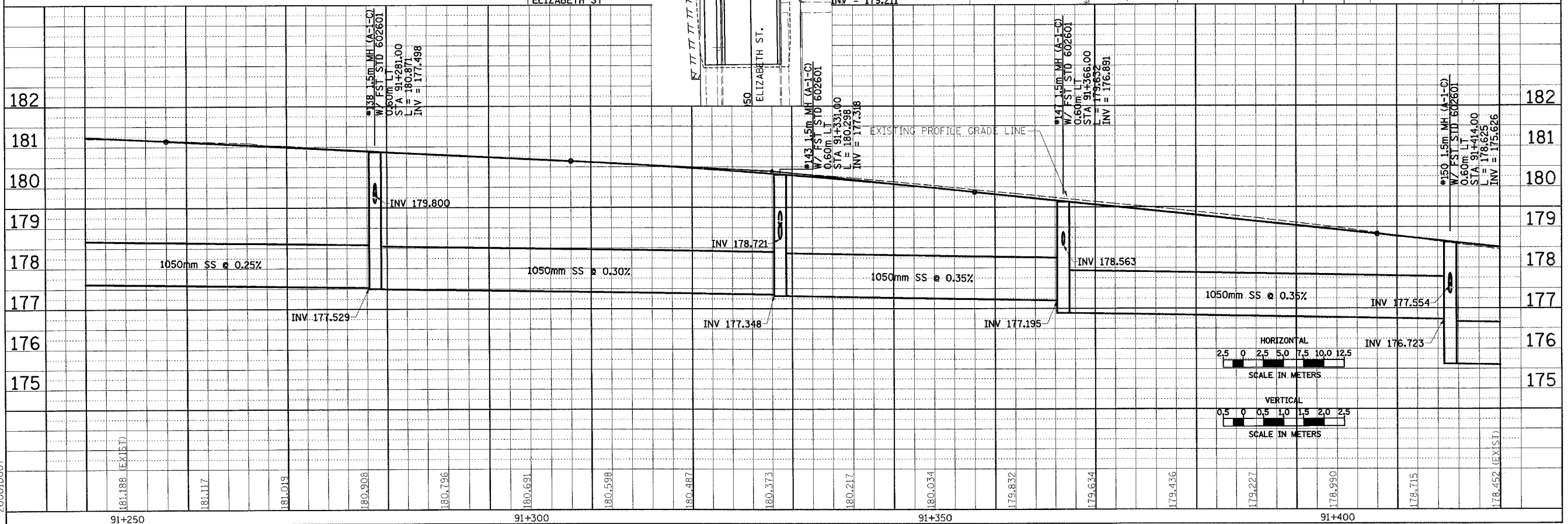
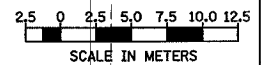
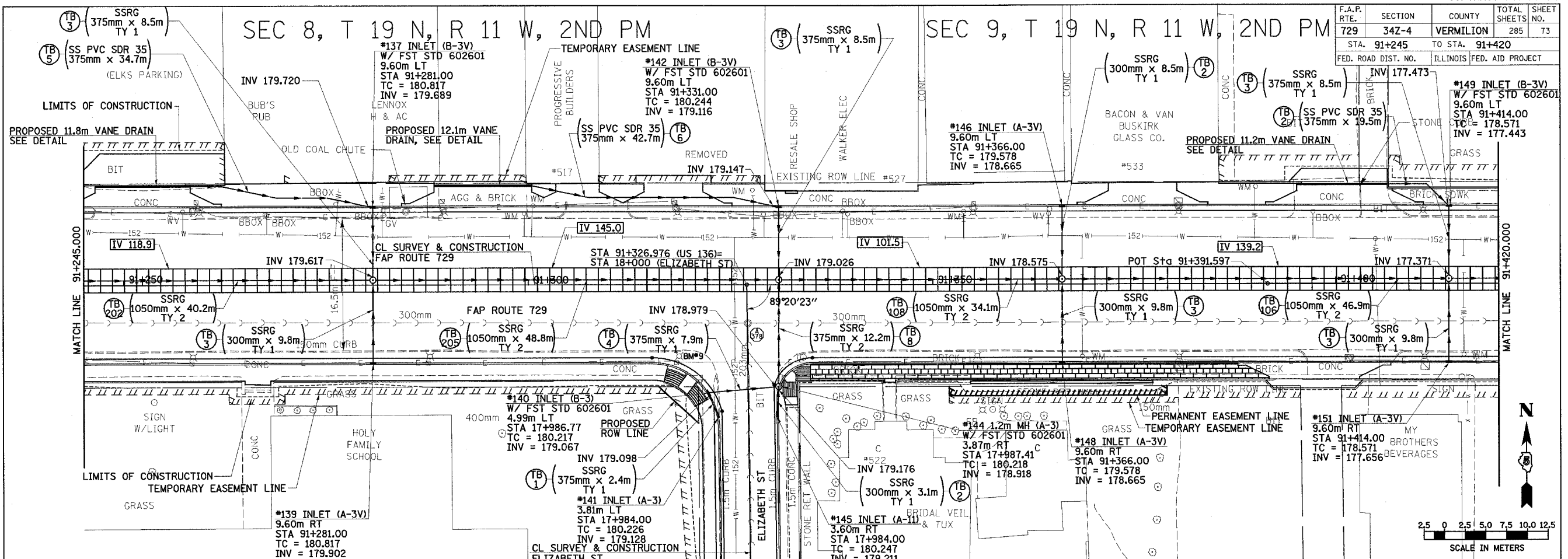


F.A.P. RTE.	SECTION	COUNTY	TOTAL SHEETS	SHEET NO.
729	34Z-4	VERMILION	285	73
STA. 91+245		TO STA. 91+420		
FED. ROAD DIST. NO.		ILLINOIS FED. AID PROJECT		

SEC 8, T 19 N, R 11 W, 2ND PM

SEC 9, T 19 N, R 11 W, 2ND PM



DRAINAGE PLAN & PROFILE, FAP 729 (US136) STA 91+245 TO STA 91+420

BY	DATE
FINAL SURVEY PLOTTED	
NOTE BOOK TEMPLATE	
AREAS CHECKED	
NO.	

BY	DATE
ORIGINAL SURVEY PLOTTED	
NOTE BOOK TEMPLATE	
AREAS CHECKED	
NO.	

2000ID007