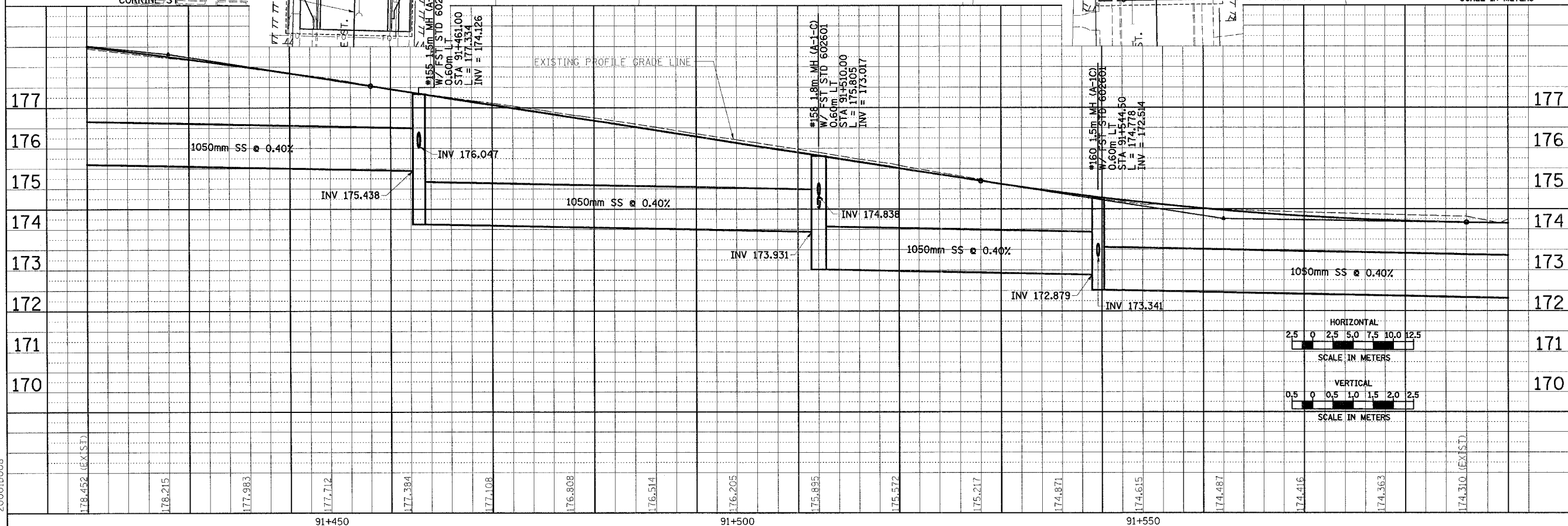
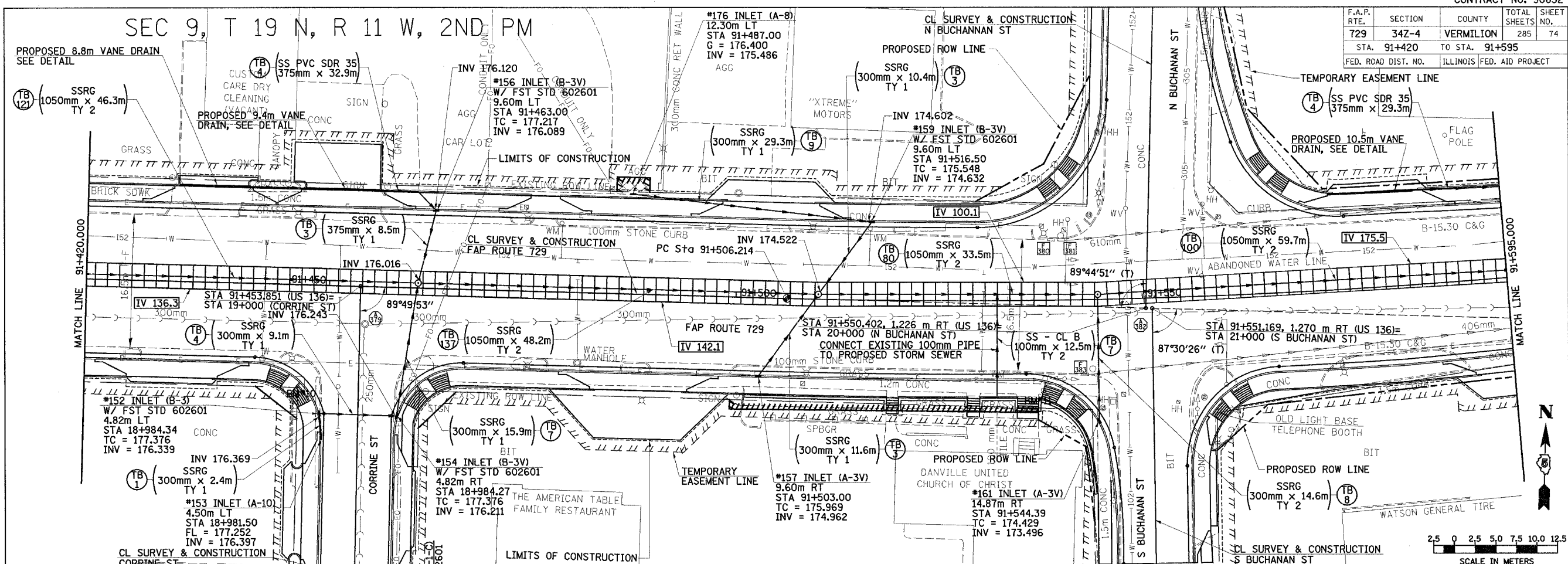


F.A.P. RTE.	SECTION	COUNTY	TOTAL SHEETS	SHEET NO.
729	34Z-4	VERMILION	285	74
STA. 91+420		TO STA. 91+595		
FED. ROAD DIST. NO. ILLINOIS FED. AID PROJECT				

SEC 9, T 19 N, R 11 W, 2ND PM

DATE	BY

DATE	BY



DRAINAGE PLAN & PROFILE, FAP 729 (US136) STA 91+420 TO STA 91+595