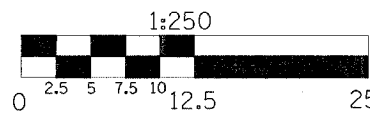
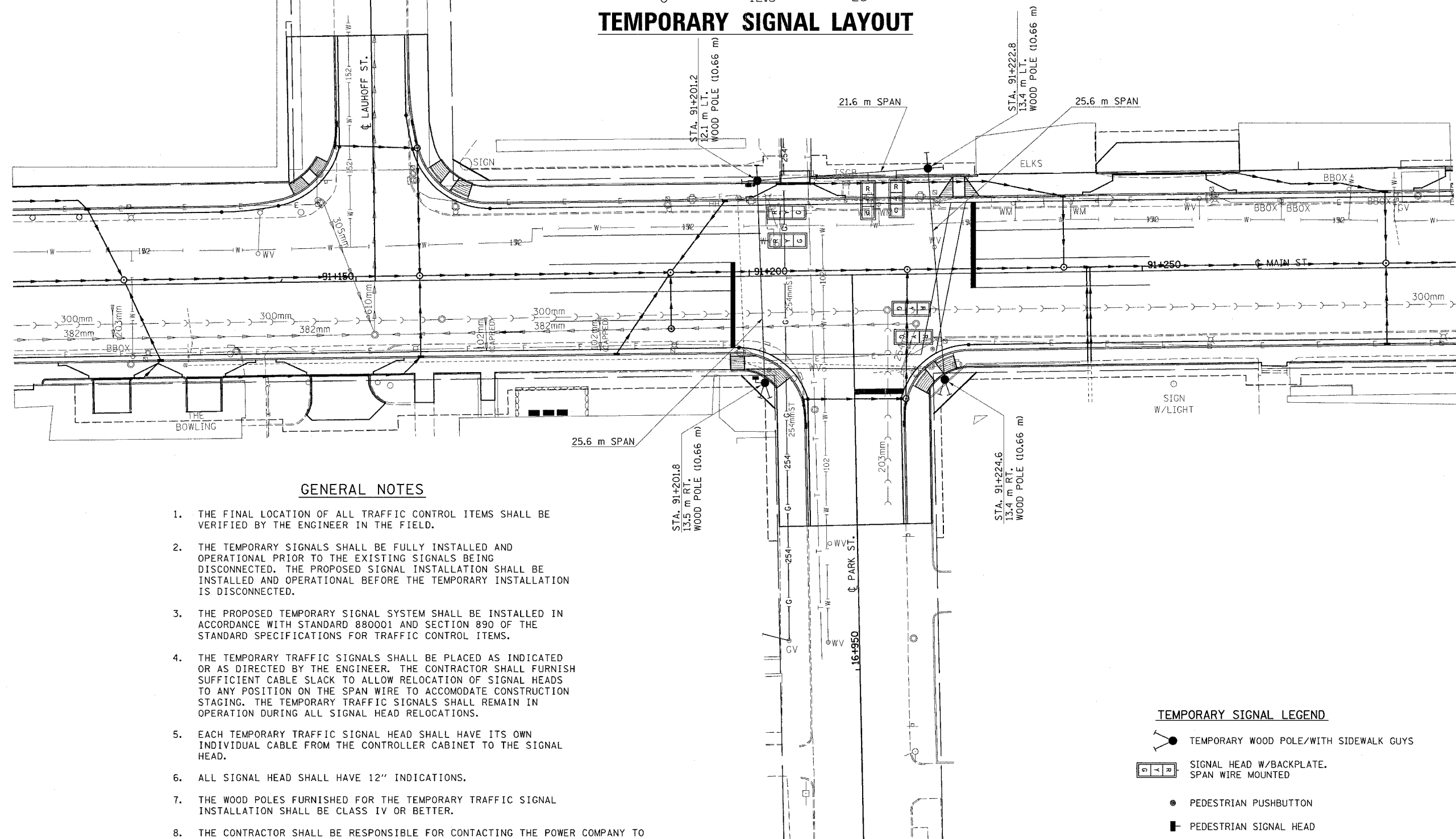


F.A.P. RTE.	SECTION	COUNTY	TOTAL SHEETS	SHEET NO.
729	34Z-4	VERMILION	285	112

# TRAFFIC SIGNAL MODERNIZATION FAP 729 (MAIN ST.) & PARK STREET



## TEMPORARY SIGNAL LAYOUT



### GENERAL NOTES

1. THE FINAL LOCATION OF ALL TRAFFIC CONTROL ITEMS SHALL BE VERIFIED BY THE ENGINEER IN THE FIELD.
2. THE TEMPORARY SIGNALS SHALL BE FULLY INSTALLED AND OPERATIONAL PRIOR TO THE EXISTING SIGNALS BEING DISCONNECTED. THE PROPOSED SIGNAL INSTALLATION SHALL BE INSTALLED AND OPERATIONAL BEFORE THE TEMPORARY INSTALLATION IS DISCONNECTED.
3. THE PROPOSED TEMPORARY SIGNAL SYSTEM SHALL BE INSTALLED IN ACCORDANCE WITH STANDARD 880001 AND SECTION 890 OF THE STANDARD SPECIFICATIONS FOR TRAFFIC CONTROL ITEMS.
4. THE TEMPORARY TRAFFIC SIGNALS SHALL BE PLACED AS INDICATED OR AS DIRECTED BY THE ENGINEER. THE CONTRACTOR SHALL FURNISH SUFFICIENT CABLE SLACK TO ALLOW RELOCATION OF SIGNAL HEADS TO ANY POSITION ON THE SPAN WIRE TO ACCOMMODATE CONSTRUCTION STAGING. THE TEMPORARY TRAFFIC SIGNALS SHALL REMAIN IN OPERATION DURING ALL SIGNAL HEAD RELOCATIONS.
5. EACH TEMPORARY TRAFFIC SIGNAL HEAD SHALL HAVE ITS OWN INDIVIDUAL CABLE FROM THE CONTROLLER CABINET TO THE SIGNAL HEAD.
6. ALL SIGNAL HEAD SHALL HAVE 12" INDICATIONS.
7. THE WOOD POLES FURNISHED FOR THE TEMPORARY TRAFFIC SIGNAL INSTALLATION SHALL BE CLASS IV OR BETTER.
8. THE CONTRACTOR SHALL BE RESPONSIBLE FOR CONTACTING THE POWER COMPANY TO ESTABLISH POWER TO THE TEMPORARY SIGNALS.

### TEMPORARY SIGNAL LEGEND

- TEMPORARY WOOD POLE/WITH SIDEWALK GUYS
- SIGNAL HEAD W/BACKPLATE, SPAN WIRE MOUNTED
- PEDESTRIAN PUSHBUTTON
- PEDESTRIAN SIGNAL HEAD