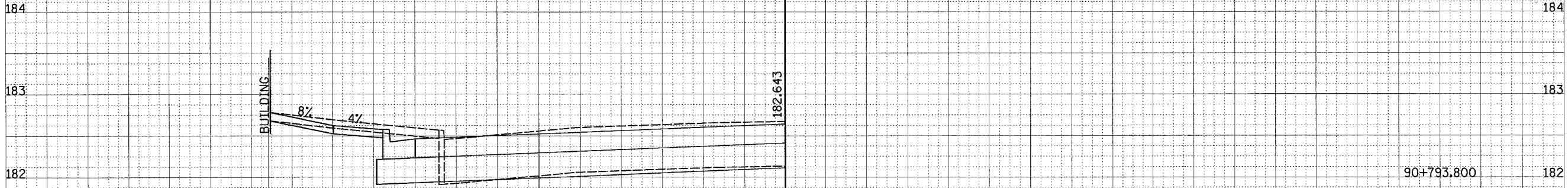


18 17 16 15 14 13 12 11 10 9 8 7 6 5 4 3 2 1 0 1 2 3 4 5 6 7 8 9 10 11 12 13

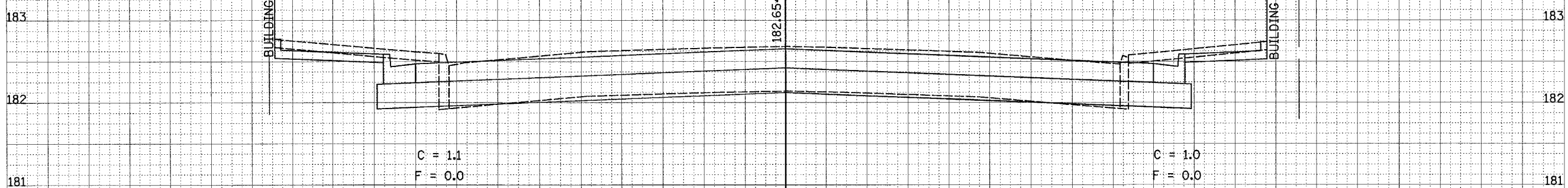
F.A.P. RTE.	SECTION	COUNTY	TOTAL SHEETS	SHEET NO.
729	34Z-4	VERMILION	285	174
STA. 90+790.000		TO STA. 90+793.800		
FED. ROAD DIST. NO.		ILLINOIS FED. AID PROJECT		
14	15	16	17	18
CONTRACT NO. 90632				

FINAL SURVEY	BY	DATE
FLIPPED		
NOTE BOOK		
AREAS CHECKED		
NO.		

ORIGINAL SURVEY	BY	DATE
FLIPPED		
NOTE BOOK		
AREAS CHECKED		
NO.		



C = 1.0  
F = 0.0



C = 1.1  
F = 0.0

C = 1.0  
F = 0.0

18 17 16 15 14 13 12 11 10 9 8 7 6 5 4 3 2 1 0 1 2 3 4 5 6 7 8 9 10 11 12 13 14 15 16 17 18