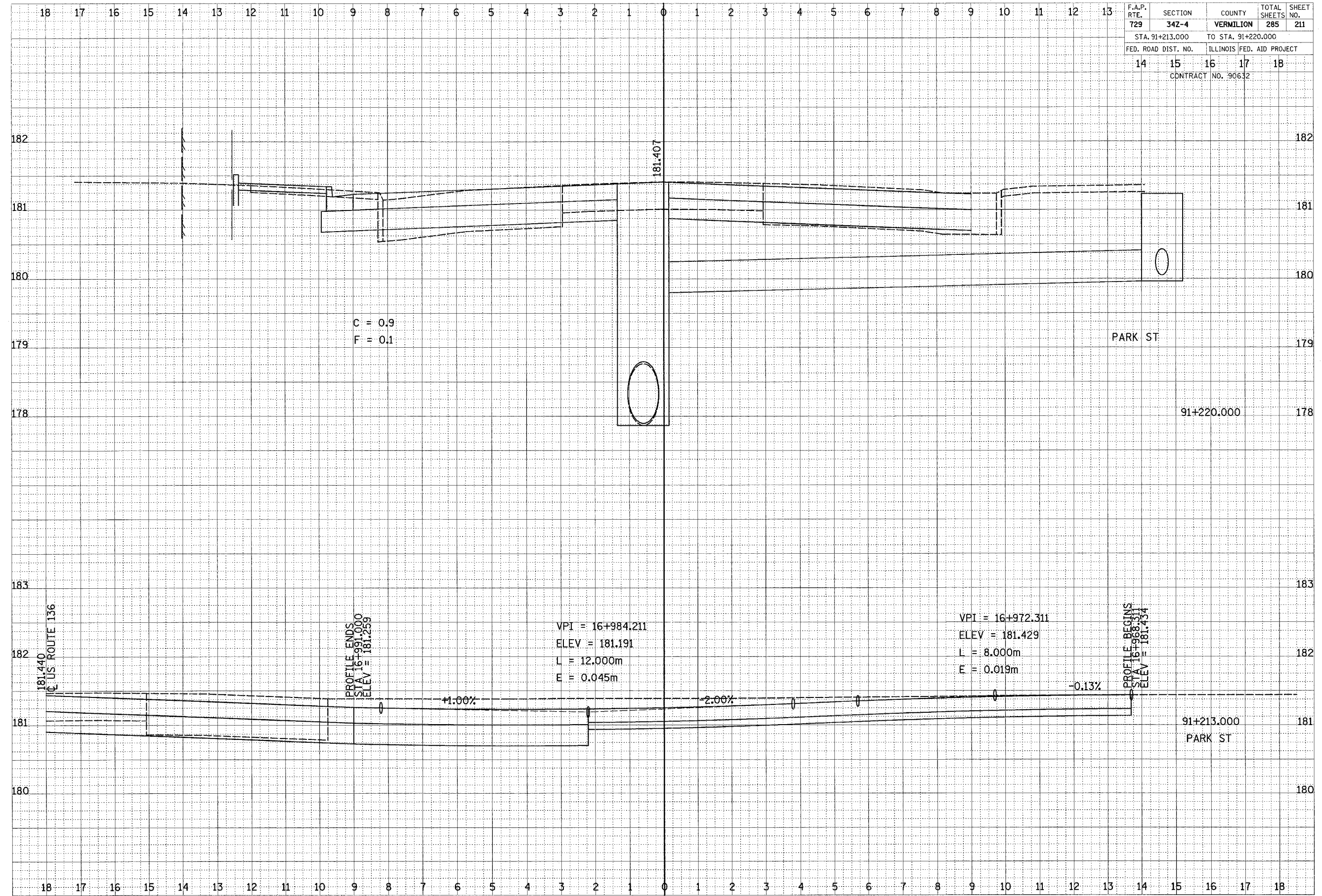


F.A.P. RTE.	SECTION	COUNTY	TOTAL SHEETS	SHEET NO.
729	342-4	VERMILION	285	211
STA. 91+213.000		TO STA. 91+220.000		
FED. ROAD DIST. NO.		ILLINOIS FED. AID PROJECT		
14		15 16 17 18		
CONTRACT NO. 90632				

FINAL SURVEY	DATE
BY	
SURVEYED	
PLOTTED	
TEMPERATURE	
NOTE BOOK	
NO.	
AREAS CHECKED	

ORIGINAL SURVEY	DATE
BY	
SURVEYED	
PLOTTED	
TEMPERATURE	
NOTE BOOK	
NO.	
AREAS CHECKED	



CROSS SECTIONS, FAP 729 (US 136)