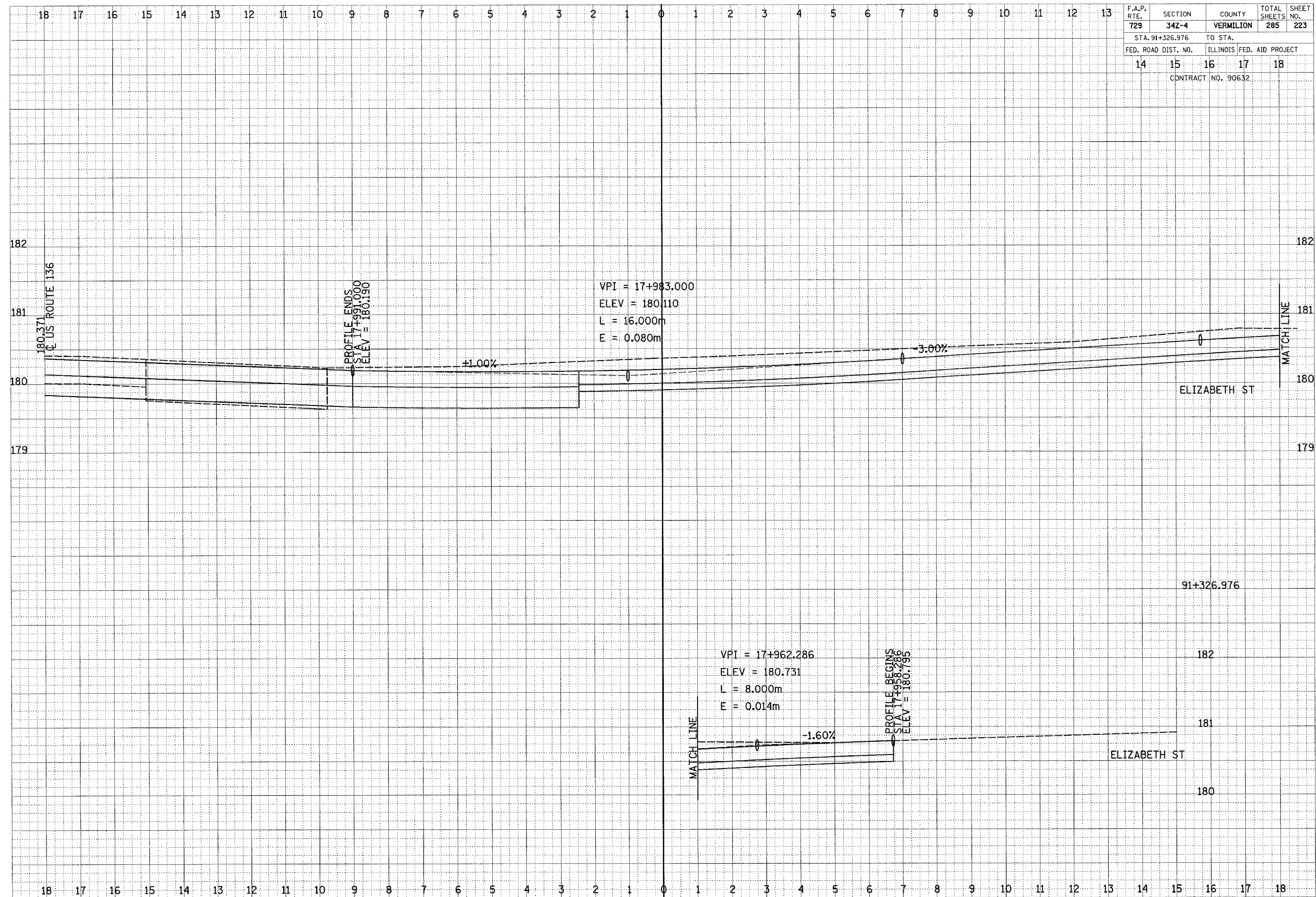


F.A.P. RTE.	SECTION	COUNTY	TOTAL SHEETS	SHEET NO.
729	34Z-4	VERMILION	285	223
STA. 91+326.976		TO STA.		
FED. ROAD DIST. NO.		ILLINOIS FED. AID PROJECT		
14		15 16 17 18		
CONTRACT NO. 90632				

FINAL SURVEY	SURVEYED	DATE
NOTE BOOK	PLOTTED	
	TEMPLATE	
	AREAS CHECKED	

ORIGINAL SURVEY	SURVEYED	DATE
NOTE BOOK	PLOTTED	
	TEMPLATE	
	AREAS CHECKED	



CROSS SECTIONS, FAP 729 (US 136)