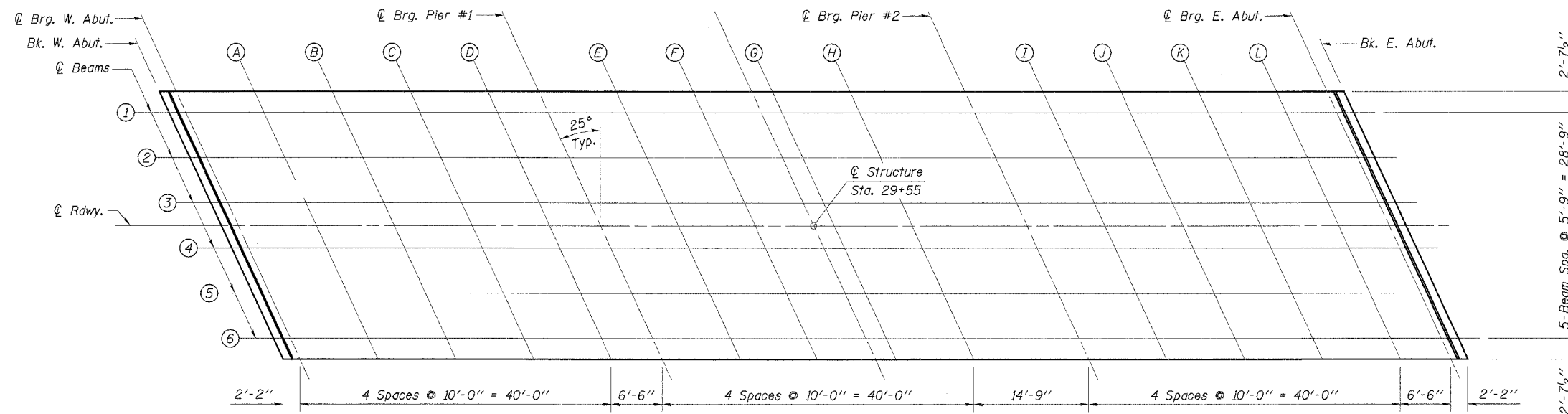
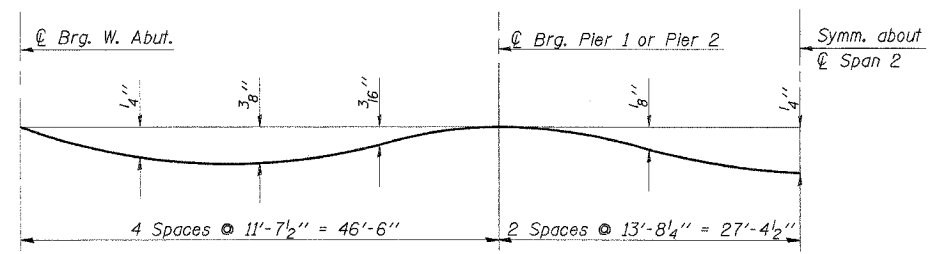


| ROUTE NO. | SECTION | COUNTY | TOTAL SHEETS | SHEET NO. |
|-----------|----------------|--------|--------------|-----------|
| C.H. 16 | 04-00209-01-BR | PIATT | 18 | 6 |

ILLINOIS
 CONTRACT NO. 91339
 Sheet 3 of 15



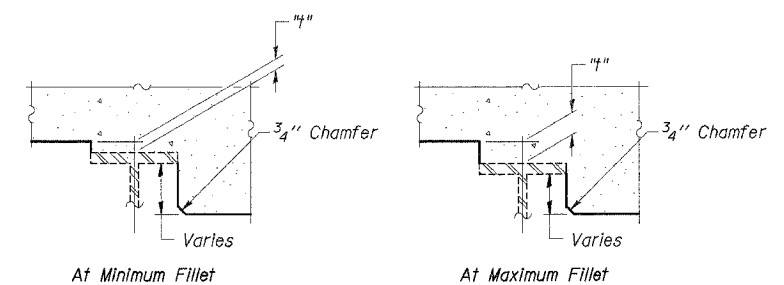
PLAN



DEAD LOAD DEFLECTION DIAGRAM

(Includes weight of concrete only)

Note: The above deflections are not to be used in the field if the Engineer is working from the grade elevations adjusted for dead load deflections as shown on sheets 4 & 5 of 15.



FILLET HEIGHTS

To determine "t": After all structural steel has been erected, elevations of the top flanges of the beams shall be taken at intervals shown above. These elevations subtracted from the "Theoretical Grade Elevations Adjusted for Dead Load Deflection" shown on Sheet 4 & 5 of 15, minus slab thickness, equals the fillet heights "t" above top of beam flange.

REHABILITATION PROJECT

| | |
|----------|--------|
| DESIGNED | A.R.K. |
| CHECKED | S.F.M. |
| DRAWN | S.A.P. |
| CHECKED | F.J.S. |

TOP OF SLAB ELEVATIONS

C.H. 16 OVER LAKE FORK
 SECTION 04-00209-01-BR
 PIATT COUNTY
 STATION 29+55

| | | |
|---|---|---|
| 4440 ASH GROVE SPRINGFIELD, IL 62711 (217) 793-8600 oesinc@comcast.com | OZYURT AND STONE, INC. CONSULTING ENGINEERS | JOB NO.: 0418 FILE: 0418SLAB.DGN DATE: 05-23-05 |
|---|---|---|