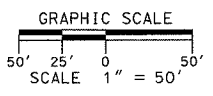
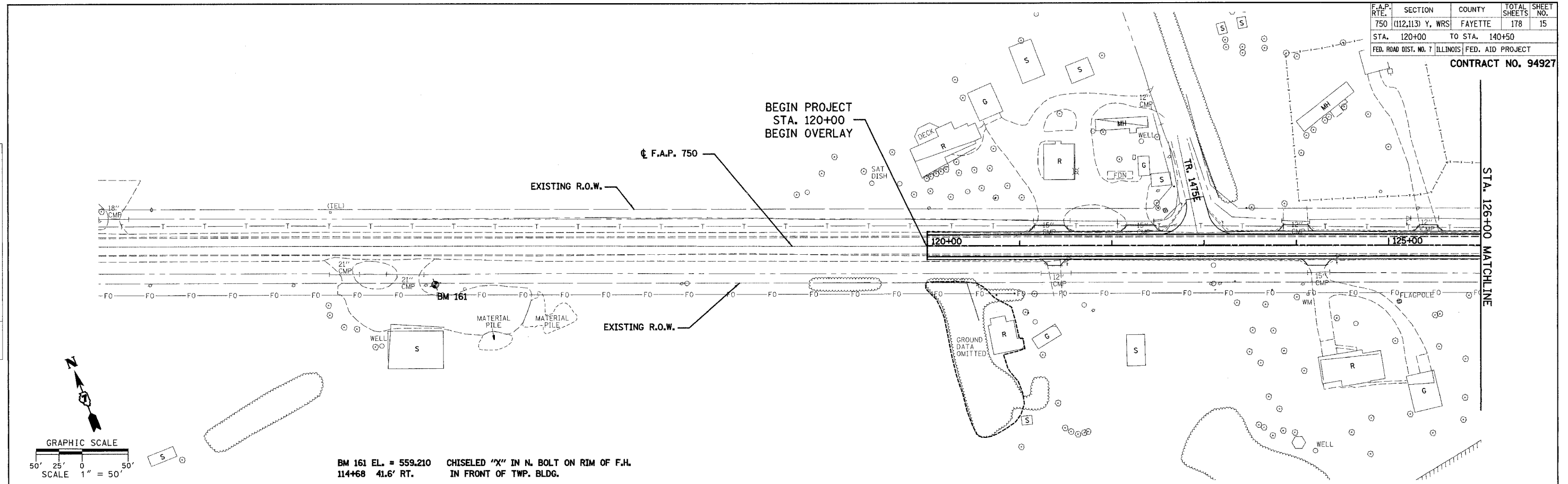


F.A.P. RTE.	SECTION	COUNTY	TOTAL SHEET SHEETS	NO.
750	(112,113) Y. WRS	FAYETTE	178	15
STA. 120+00	TO STA. 140+50			
FED. ROAD DIST. NO. 7		ILLINOIS	FED. AID PROJECT	

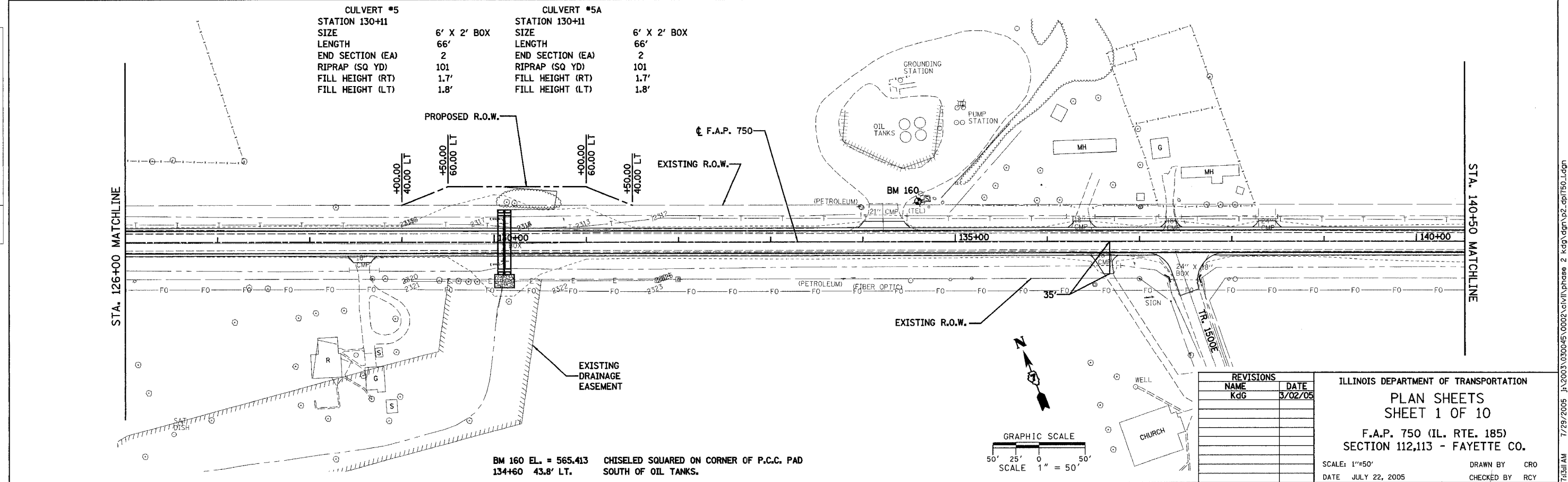
CONTRACT NO. 94927

PLAN	DATE
BY	
DATE	
BY	
DATE	
BY	
DATE	
BY	
DATE	

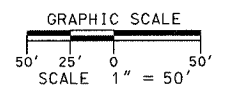


BM 161 EL. = 559.210 CHISELED "X" IN N. BOLT ON RIM OF F.H. 114+68 41.6' RT. IN FRONT OF TWP. BLDG.

PLAN	DATE
BY	
DATE	
BY	
DATE	
BY	
DATE	
BY	
DATE	



CULVERT #5		CULVERT #5A	
STATION	130+11	STATION	130+11
SIZE	6' X 2' BOX	SIZE	6' X 2' BOX
LENGTH	66'	LENGTH	66'
END SECTION (EA)	2	END SECTION (EA)	2
RIPRAP (SQ YD)	101	RIPRAP (SQ YD)	101
FILL HEIGHT (RT)	1.7'	FILL HEIGHT (RT)	1.7'
FILL HEIGHT (LT)	1.8'	FILL HEIGHT (LT)	1.8'



BM 160 EL. = 565.413 CHISELED SQUARED ON CORNER OF P.C.C. PAD 134+60 43.8' LT. SOUTH OF OIL TANKS.

REVISIONS	
NAME	DATE
KdG	3/02/05

ILLINOIS DEPARTMENT OF TRANSPORTATION
PLAN SHEETS
SHEET 1 OF 10
 F.A.P. 750 (IL. RTE. 185)
 SECTION 112,113 - FAYETTE CO.
 SCALE: 1"=50'
 DATE: JULY 22, 2005
 DRAWN BY: CRO
 CHECKED BY: RCY

I:\projects\94927\94927.dwg phase 2 kdg 7/29/2005 7:31AM