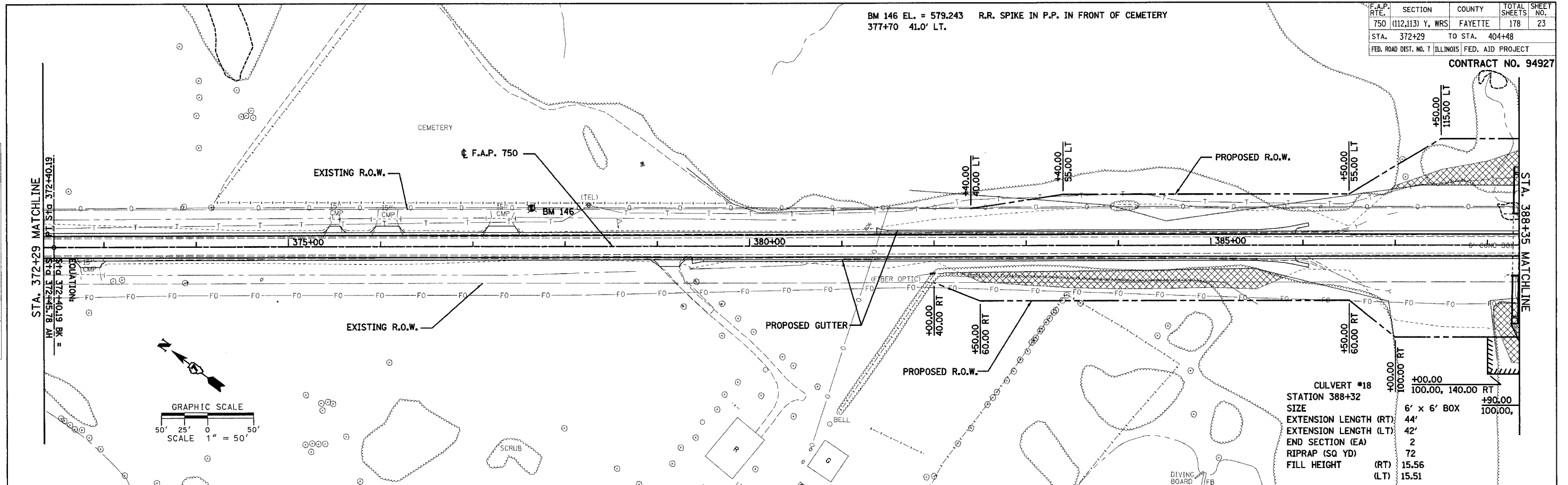


BM 146 EL. = 579.243 R.R. SPIKE IN P.P. IN FRONT OF CEMETERY
377+70 41.0' LT.

F.A.P. RTE.	SECTION	COUNTY	TOTAL SHEETS	SHEET NO.
750	(112,113) Y, WRS	FAYETTE	178	23
STA. 372+29	TO STA. 404+48			
FED. ROAD DIST. NO. 7		ILLINOIS	FED. AID PROJECT	

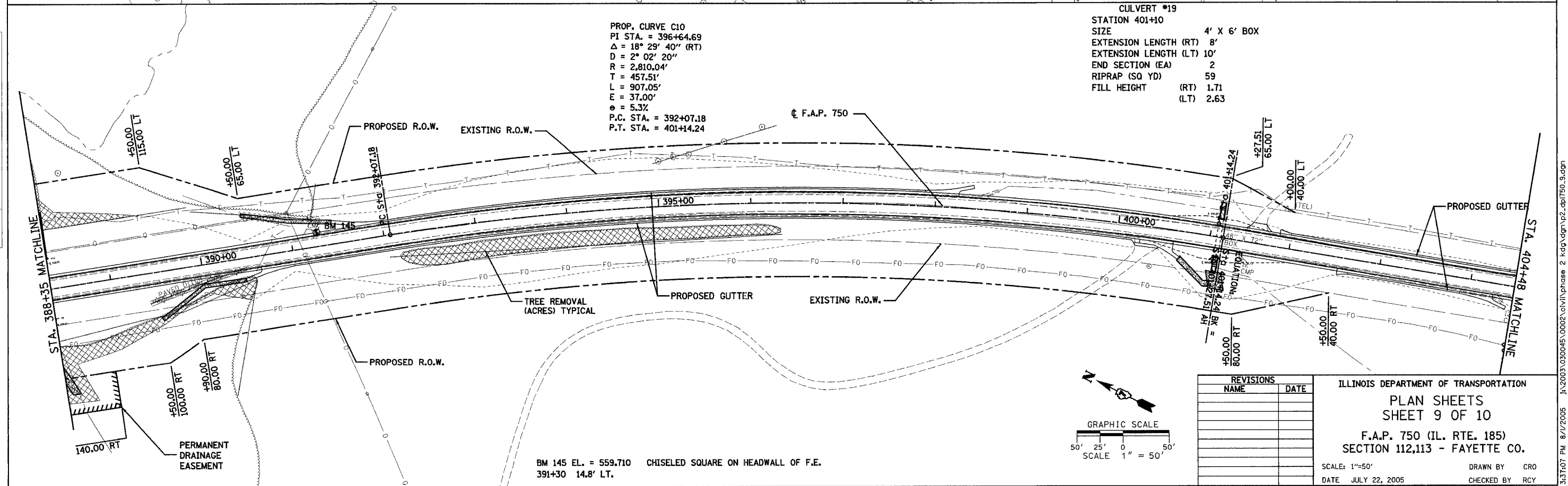
CONTRACT NO. 94927

PLAN	DATE
SURVEYED	
PLOTTED	
CHECKED	
NO. OF MAY CHECKED	
CADD FILE NAME	



CULVERT #18
STATION 388+32
SIZE 6' x 6' BOX
EXTENSION LENGTH (RT) 44'
EXTENSION LENGTH (LT) 42'
END SECTION (EA) 2
RIPRAP (SQ YD) 72
FILL HEIGHT (RT) 15.56
(LT) 15.51

PLAN	DATE
SURVEYED	
PLOTTED	
CHECKED	
NO. OF MAY CHECKED	
CADD FILE NAME	



PROP. CURVE C10
PI STA. = 396+64.69
Δ = 18° 29' 40" (RT)
D = 2° 02' 20"
R = 2,810.04'
T = 457.51'
L = 907.05'
E = 37.00'
e = 5.3%
P.C. STA. = 392+07.18
P.T. STA. = 401+14.24

CULVERT #19
STATION 401+10
SIZE 4' x 6' BOX
EXTENSION LENGTH (RT) 8'
EXTENSION LENGTH (LT) 10'
END SECTION (EA) 2
RIPRAP (SQ YD) 59
FILL HEIGHT (RT) 1.71
(LT) 2.63

REVISIONS	
NAME	DATE

ILLINOIS DEPARTMENT OF TRANSPORTATION
PLAN SHEETS
SHEET 9 OF 10
F.A.P. 750 (IL. RTE. 185)
SECTION 112,113 - FAYETTE CO.

SCALE: 1"=50'
DATE JULY 22, 2005
DRAWN BY CRO
CHECKED BY RCY

BM 145 EL. = 559.710 CHISELED SQUARE ON HEADWALL OF F.E.
391+30 14.8' LT.