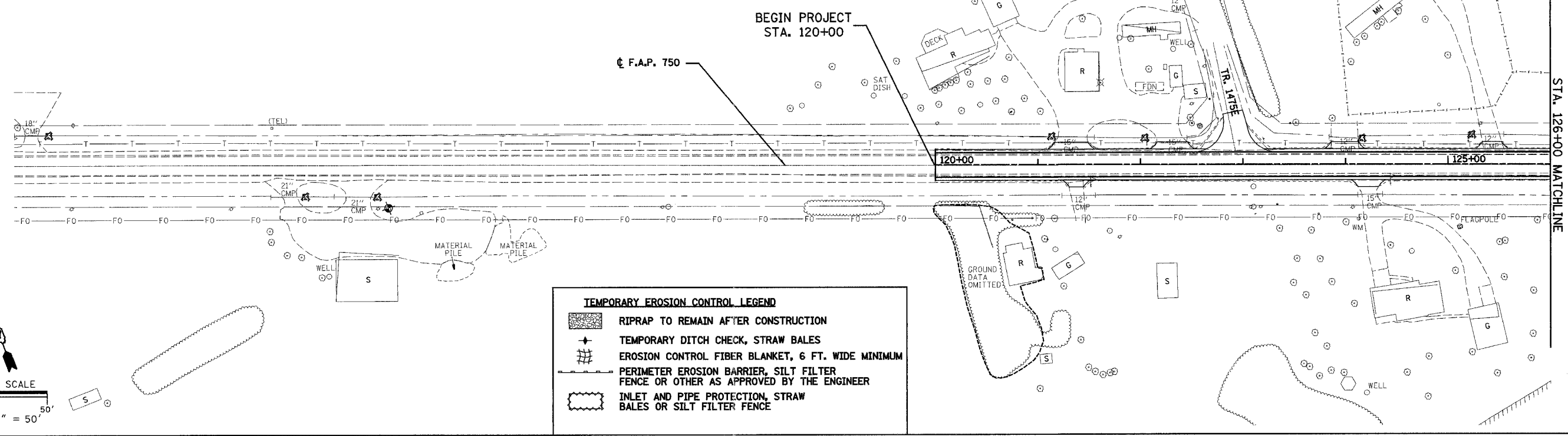


F.A.P. RTE.	SECTION	COUNTY	TOTAL SHEETS	SHEET NO.
750	(112,113) Y, WRS	FAYETTE	178	25
STA. 120+00	TO STA. 140+50			
FED. ROAD DIST. NO. 1	ILLINOIS	FED. AID PROJECT		

CONTRACT NO. 94927

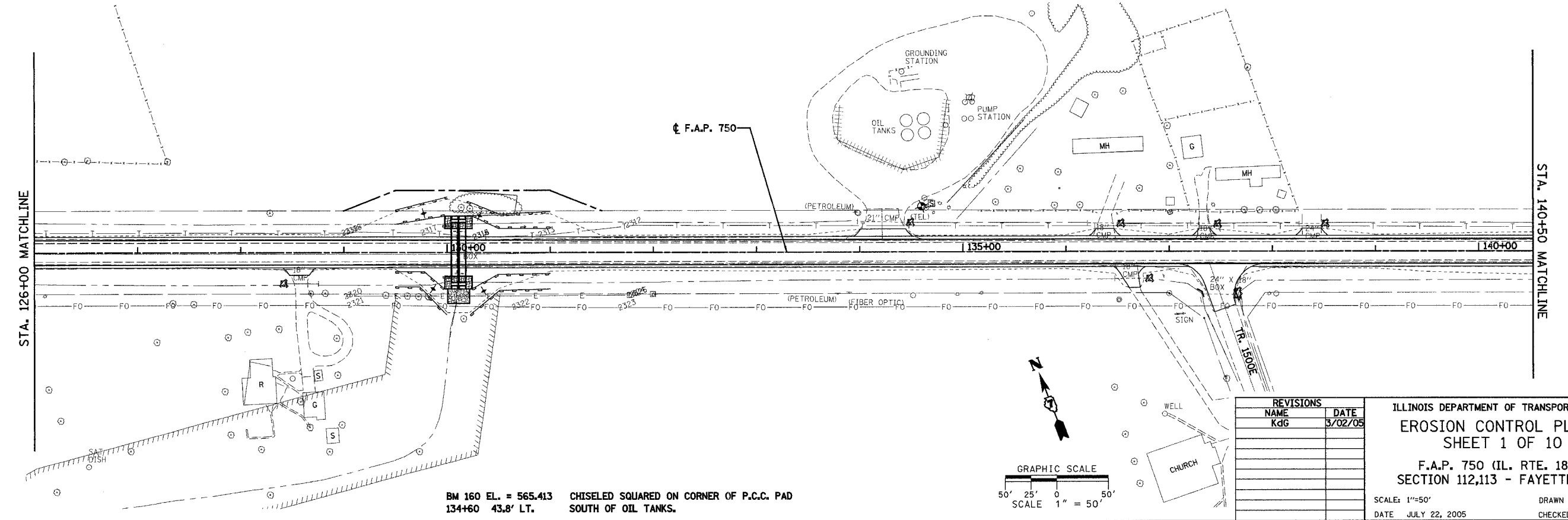
PLAN	SURVEYED	DATE
	BY	
	PLOTTED	
	NOTED	
	BY	
	DATE	



TEMPORARY EROSION CONTROL LEGEND

- RIPRAP TO REMAIN AFTER CONSTRUCTION
- TEMPORARY DITCH CHECK, STRAW BALES
- EROSION CONTROL FIBER BLANKET, 6 FT. WIDE MINIMUM
- PERIMETER EROSION BARRIER, SILT FILTER FENCE OR OTHER AS APPROVED BY THE ENGINEER
- INLET AND PIPE PROTECTION, STRAW BALES OR SILT FILTER FENCE

PLAN	SURVEYED	DATE
	BY	
	PLOTTED	
	NOTED	
	BY	
	DATE	



BM 160 EL. = 565.413
 134+60 43.8' LT. CHISELED SQUARED ON CORNER OF P.C.C. PAD SOUTH OF OIL TANKS.

REVISIONS	
NAME	DATE
Kdg	3/02/05

ILLINOIS DEPARTMENT OF TRANSPORTATION
EROSION CONTROL PLAN
 SHEET 1 OF 10
 F.A.P. 750 (IL. RTE. 185)
 SECTION 112,113 - FAYETTE CO.
 SCALE: 1"=50'
 DATE: JULY 22, 2005
 DRAWN BY: CRO
 CHECKED BY: RCY

J:\2003\030045\0002\civil\phase 2 kdg\gdg\p2_erc750.dgn 8/1/2005 3:37:03 PM