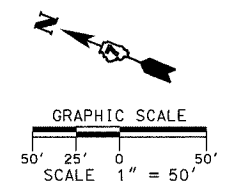
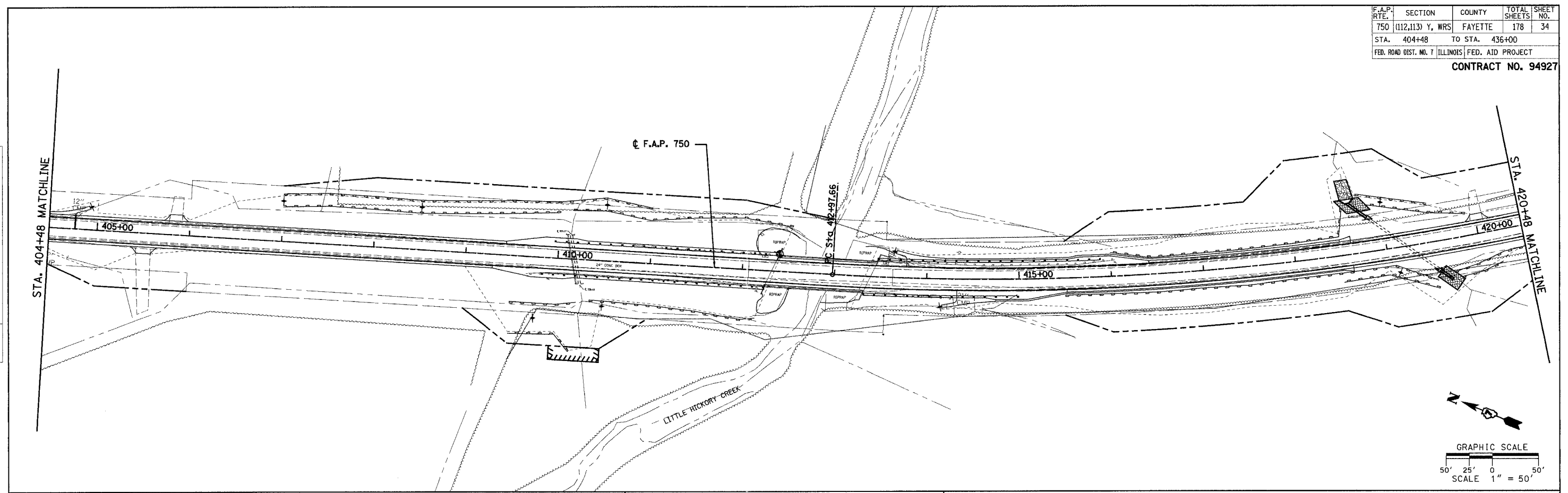


F.A.P. RTE.	SECTION	COUNTY	TOTAL SHEETS	SHEET NO.
750	(112,113) Y, WRS	FAYETTE	178	34
STA. 404+48	TO STA. 436+00			
FED. ROAD DIST. NO. 7	ILLINOIS	FED. AID PROJECT		

**CONTRACT NO. 94927**

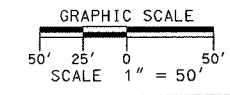
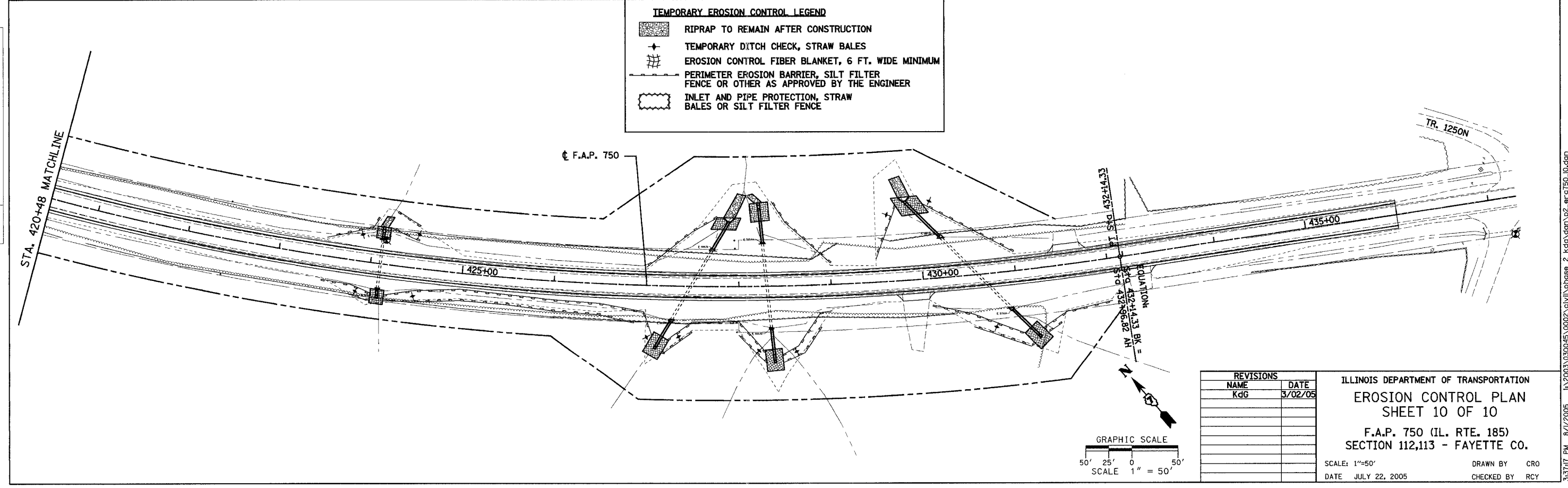
PLAN	DATE
STARTED	BY
PLotted	
NOTE BOOK	
ADD FILE NAME	



**TEMPORARY EROSION CONTROL LEGEND**

	RIPRAP TO REMAIN AFTER CONSTRUCTION
	TEMPORARY DITCH CHECK, STRAW BALES
	EROSION CONTROL FIBER BLANKET, 6 FT. WIDE MINIMUM
	PERIMETER EROSION BARRIER, SILT FILTER FENCE OR OTHER AS APPROVED BY THE ENGINEER
	INLET AND PIPE PROTECTION, STRAW BALES OR SILT FILTER FENCE

PLAN	DATE
STARTED	BY
PLotted	
NOTE BOOK	
ADD FILE NAME	



REVISIONS	
NAME	DATE
KGG	3/02/05

ILLINOIS DEPARTMENT OF TRANSPORTATION  
**EROSION CONTROL PLAN**  
**SHEET 10 OF 10**  
 F.A.P. 750 (IL. RTE. 185)  
 SECTION 112,113 - FAYETTE CO.  
 SCALE: 1"=50'  
 DATE: JULY 22, 2005  
 DRAWN BY: CRO  
 CHECKED BY: RCY

J:\2003\030045\0002\civil\phase 2\kdg\dm\p2\_erc\750\_10.dgn 8/1/2005 3:37:17 PM