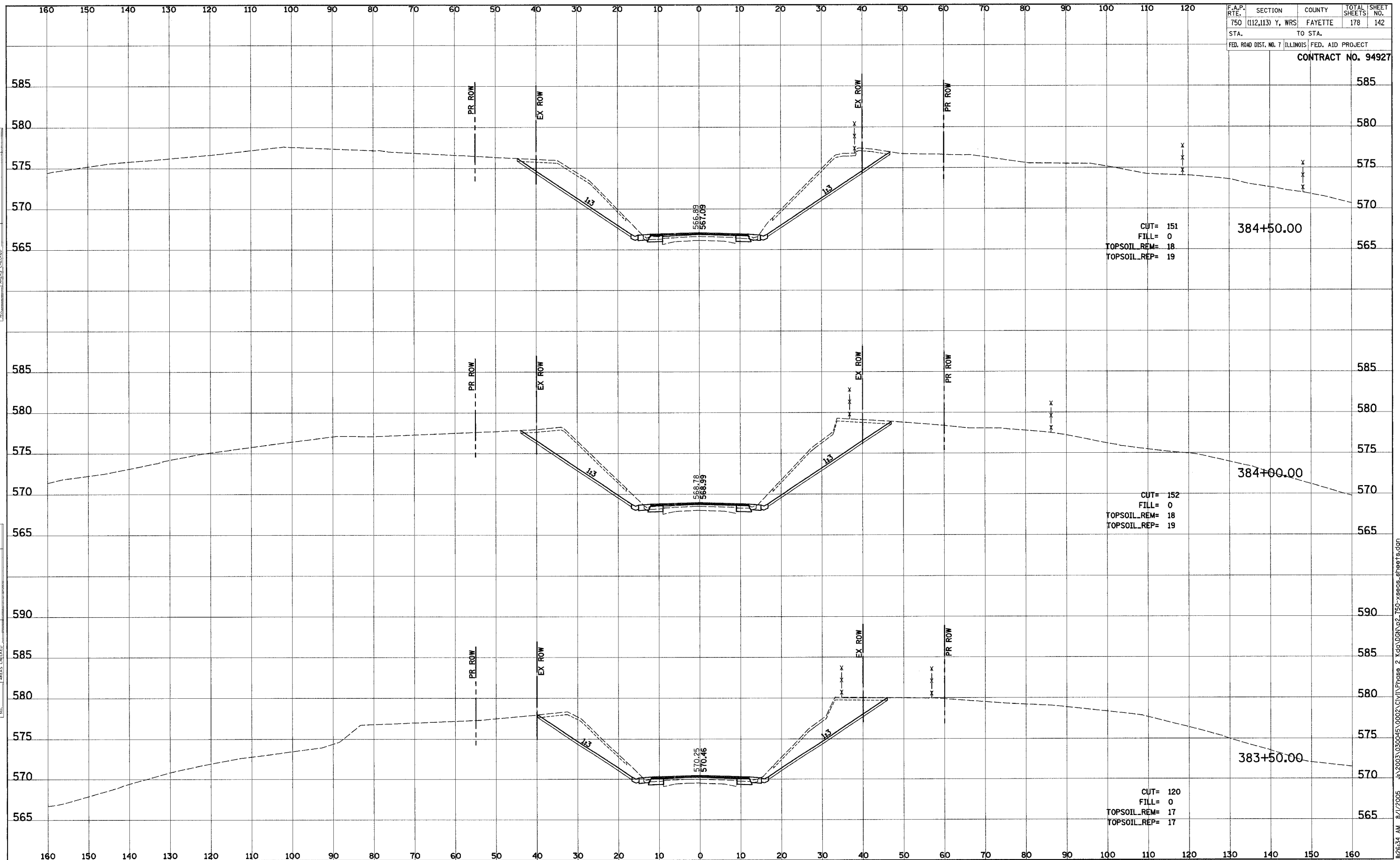


F.A.P. NO.	SECTION	COUNTY	TOTAL SHEETS	SHEET NO.
750	(112,113) Y, WRS	FAYETTE	178	142
STA.		TO STA.		
FED. ROAD DIST. NO. 7		ILLINOIS FED. AID PROJECT		
CONTRACT NO. 94927				

FINAL SURVEY	SURVEYED	DATE
NOTE BOOK	PLOTTED	
	TEMPLAT	
	AREAS CHECKED	

ORIGINAL SURVEY	SURVEYED	DATE
NOTE BOOK	PLOTTED	
	TEMPLAT	
	AREAS CHECKED	



8/1/2005 8:11/2005 J:\2003\030045\0002\CIVIL\Phase 2\Keg\DRN\p2_750-xsecs_sheets.dgn