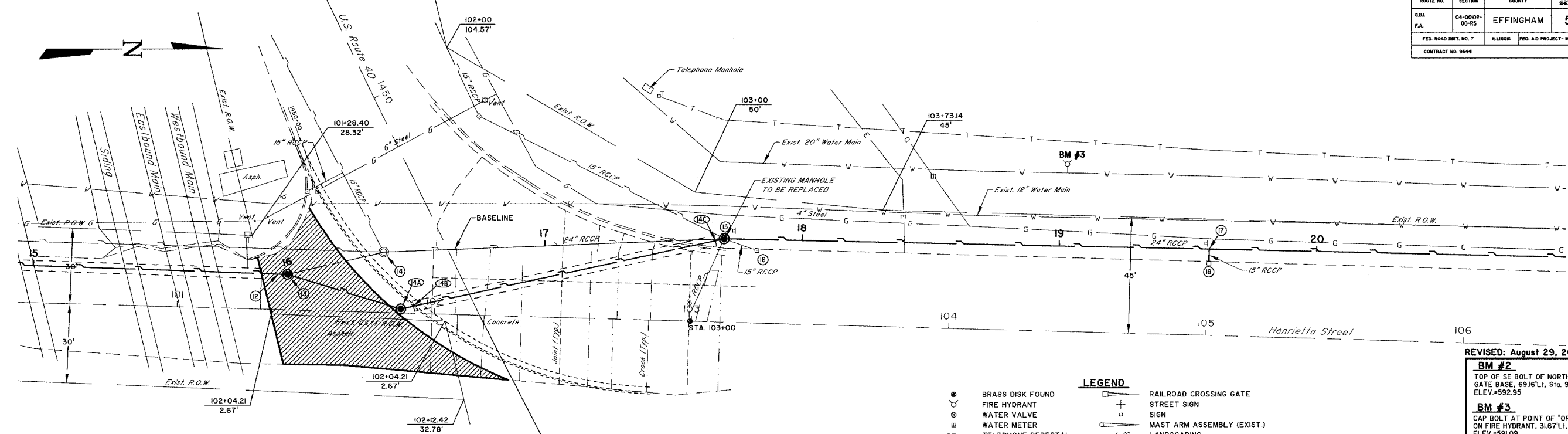
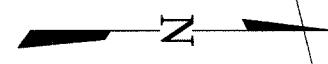


| | | | | |
|-----------------------|---------------|---------------------------|--------------|-----------|
| ROUTE NO. | SECTION | COUNTY | TOTAL SHEETS | SHEET NO. |
| S.A. | 04-0002-00-RS | EFFINGHAM | 5 | 4 |
| FED. ROAD DIST. NO. 7 | ILLINOIS | FED. AID PROJECT: M-50289 | | |
| CONTRACT NO. 9544 | | | | |



SCALES:
 1" = 20' HOR
 1" = 5' VER

STATION EQUATION
 STA. 102+17.6 (HENRIETTA ST.) =
 STA. 1450+93.7 (U.S. ROUTE 40)

- LEGEND**
- BRASS DISK FOUND
 - ⊕ FIRE HYDRANT
 - ⊙ WATER VALVE
 - ⊕ WATER METER
 - ⊕ TELEPHONE PEDESTAL
 - ⊕ UNDERGROUND TELEPHONE
 - ⊕ GAS VALVE
 - ⊕ GAS MAIN (EXIST.)
 - ⊕ UTILITY POLE
 - ⊕ UTILITY POLE w/LIGHT
 - ⊕ GUY ANCHOR
 - O/H E— OVERHEAD ELECTRIC
 - ⊕ RAILROAD CROSSING GATE
 - ⊕ STREET SIGN
 - ⊕ SIGN
 - ⊕ MAST ARM ASSEMBLY (EXIST.)
 - ⊕ LANDSCAPING
 - ⊕ FENCE
 - ▨ PAVEMENT REMOVAL
 - ▨ SIDEWALK REMOVAL & REPLACEMENT (SPECIAL)
 - ▨ PAVEMENT REMOVAL & REPLACEMENT

REVISED: August 29, 2005

BM #2
 TOP OF SE BOLT OF NORTH CROSSING
 GATE BASE, 69.16'L1, Sta. 9+96.22
 ELEV.=592.95

BM #3
 CAP BOLT AT POINT OF "OPEN" ARROW
 ON FIRE HYDRANT, 31.67'L1, Sta. 19+02.47
 ELEV.=591.09

MILANO & GRUNLOH ENGINEERS, LLC
 14 WEST WASHINGTON
 P.O. BOX 837
 EFFINGHAM, ILLINOIS 62401
 PHONE: (217) 347-7282
 (609) 877-2794
 FAX #: (217) 342-3433
 E-mail: mge@milanoandgrunloh.com

File name: S:\DWG\03\03007\dwg\03007.dwg
 Plot date: 08/29/05 at 10:00 P.L. 327,559

