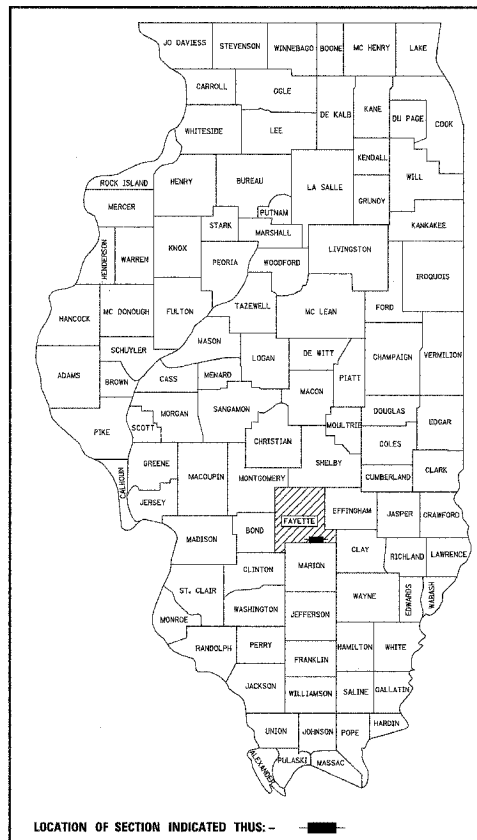


STATE OF ILLINOIS
DEPARTMENT OF TRANSPORTATION

PLANS FOR PROPOSED
FEDERAL-AID BRIDGE REPLACEMENT
AND REHABILITATION PROGRAM

TR 571B
SECTION 00-07125-00-BR
PROJECT No. AC BROS-051(69)
OVER NORTH FORK CREEK
FAYETTE COUNTY
C-97-041-05

ROUTE	SECTION	COUNTY	TOTAL SHEETS	SHEET NO.
TR 571B	00-07125-00-BR	FAYETTE	9	1
FED. ROAD DIST. NO. 7 ILLINOIS		FED. AID PROJECT		
CONTRACT NO. 95443				



LOCATION OF SECTION INDICATED THUS: - ■ -

INDEX OF SHEETS

1. COVER SHEET
2. SUMMARY OF QUANTITIES AND TYPICAL SECTIONS
3. PLAN AND PROFILE OF ROADWAY
- 4.-5. CROSS SECTIONS OF ROADWAY
6. GENERAL PLAN AND ELEVATION
7. PRECAST PRESTRESSED CONCRETE DECK BEAMS
8. STEEL RAILING, TYPE S1
9. ABUTMENTS

STANDARDS ARE INCLUDED IN PLANS AFTER SHEET NO. 9

- 000001-04 STANDARD SYMBOLS, ABBREVIATIONS AND PATTERNS
- 280001-02 TEMPORARY EROSION CONTROL SYSTEMS
- 515001-02 NAME PLATES FOR BRIDGES
- 702001-05 TRAFFIC CONTROL DEVICES
- BLR-21-6 TYPICAL APPLICATIONS OF TRAFFIC CONTROL DEVICES

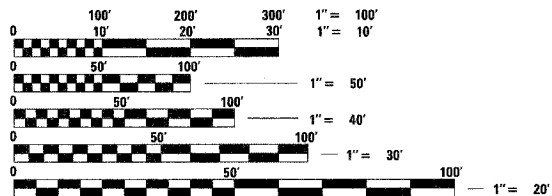
SOIL BORINGS (SEE SPECIFICATIONS)

DESIGN CLASSIFICATION: LOCAL ROAD (NON-URBAN)

ADT₂₀₀₂ : 50

ADT₂₀₂₂ : 50

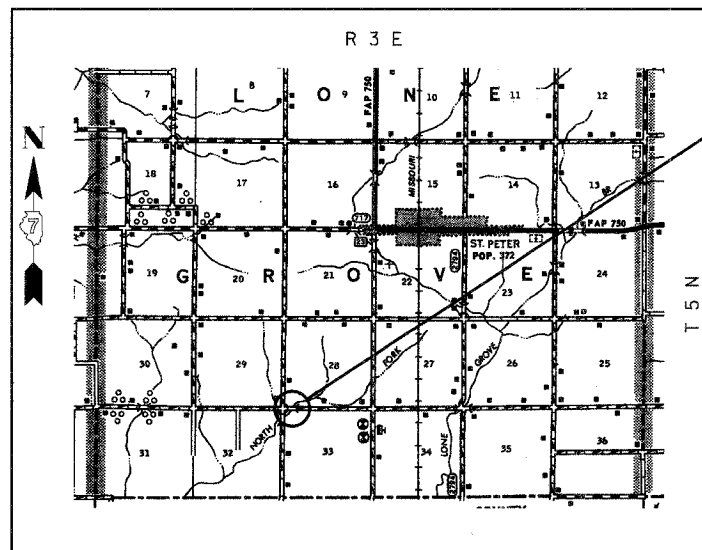
DESIGN SPEED: 30 MPH



FULL SIZE PLANS HAVE BEEN PREPARED USING STANDARD ENGINEERING SCALES, REDUCED SIZED PLANS WILL NOT CONFORM TO STANDARD SCALES, IN MAKING MEASUREMENTS ON REDUCED PLANS, THE ABOVE SCALES MAY BE USED.

J.U.L.I.E.
JOINT UTILITY LOCATING INFORMATION FOR EXCAVATORS
1-800-892-0123 Website: <http://www.illinois1call.com>

CONTRACT NO. 95443



LOCATION: NEAR THE NW CORNER OF SECTION 33, T 5 N, R 3 E, 3rd P.M.
NET LENGTH OF PROJECT: 300.00 FT = 0.057 MI

SECTION BEGINS AT
STA. 11+50.00

SECTION 00-07125-00-BR INCLUDES THE CONSTRUCTION OF A SINGLE SPAN PRECAST PRESTRESSED CONCRETE DECK BEAM SUPERSTRUCTURE ON SPILL-THRU ABUTMENTS CARRYING TR 571B OVER NORTH FORK CREEK, 41'-6 1/2" BK TO BK ABUTMENTS, 24' OUT TO OUT OF DECK, 30° AHEAD LEFT SKEW. EXISTING STRUCTURE NO. 026-3255 PROPOSED STRUCTURE NO. 026-3419

SECTION ENDS AT
STA. 14+50.00

APPROVED 8-19, 20 05
W. Paul A. Maff
COUNTY ENGINEER

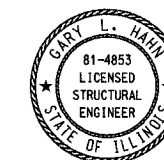
PASSED 9-9, 20 05
Maureen Kast
DISTRICT SEVEN ENGINEER OF LOCAL ROADS & STREETS

RELEASING FOR BID BASED ON LIMITED REVIEW 9-9, 20 05
Christine M. Reed
DEPUTY DIRECTOR OF HIGHWAYS, REGION FOUR ENGINEER

STATE OF ILLINOIS
DEPARTMENT OF TRANSPORTATION



Gary L. Hahn 8-11-05
GARY L. HAHN
CENTRALIA, ILLINOIS
ILLINOIS LICENSED PROFESSIONAL ENGINEER NO. 62-42606
EXPIRES NOV. 30, 2005



Gary L. Hahn 8-11-05
GARY L. HAHN
CENTRALIA, ILLINOIS
ILLINOIS LICENSED STRUCTURAL ENGINEER NO. 81-4853
EXPIRES NOV. 30, 2006

RHUTASEL and ASSOCIATES, INC.
CONSULTING ENGINEERS • LAND SURVEYORS
CENTRALIA, ILLINOIS FREEBURG, ILLINOIS
ILLINOIS DESIGN FIRM LICENSE NO. 184-000287

PRINTED BY THE AUTHORITY OF THE STATE OF ILLINOIS