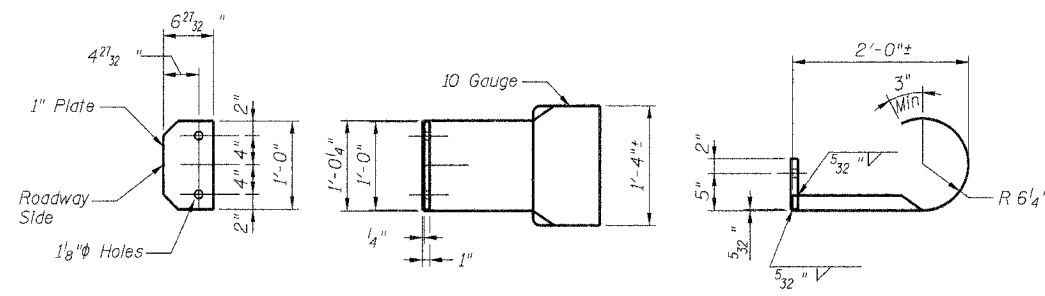
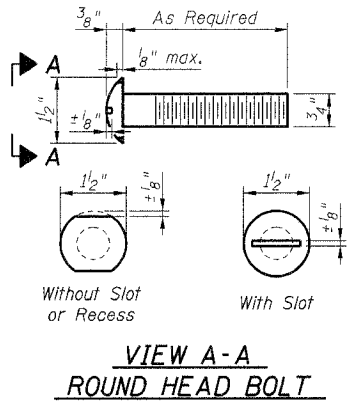


ROUTE	SECTION	COUNTY	TOTAL SHEETS	SHEET NO.
TR 571B	00-07125-00-BR	FAYETTE	9	8
FED. ROAD DIST. NO. 7	ILLINOIS	FED. AID PROJECT		
CONTRACT NO. 95443				

SEE SHEET 6 FOR RAIL POST LAYOUT



NOTES

Hollow structural steel tubing shall conform to the requirements of ASTM designation A-500 Grade B Structural Steel Tubing and shall meet the longitudinal CVN requirements of 15 ft-lbs at 0° F.

All other steel shapes and plates shall conform to the requirements of AASHTO M-270, Grade 36 except posts and angles shall conform to AASHTO M-270, Grade 50.

Bolts, cap screws, and nuts shall conform to the requirement of ASTM designation A-307 except for High Strength bolts, nuts and washers noted which shall conform to AASHTO M-164.

All bolts, nuts, cap screws, washers and lock washers shall be galvanized in accordance with AASHTO M-232.

All posts, railing, rail splices, end sections, anchor devices and angles shall be galvanized after shop fabrication in accordance with AASHTO M-111 and ASTM A-385. Galvanized rail shall not be painted.

Railing shall be in accordance with Section 509 of the Standard Specifications, except as noted, and will be paid for at the contract unit price per foot for STEEL RAILING, TYPE S1.

All field drilled holes shall be coated with an approved zinc rich paint before erection.

Any steel shape in contact with concrete shall receive two coats of asphalt paint conforming to Section 1060.07 Type II or place 1/8 inch fabric bearing pad between the steel and concrete.

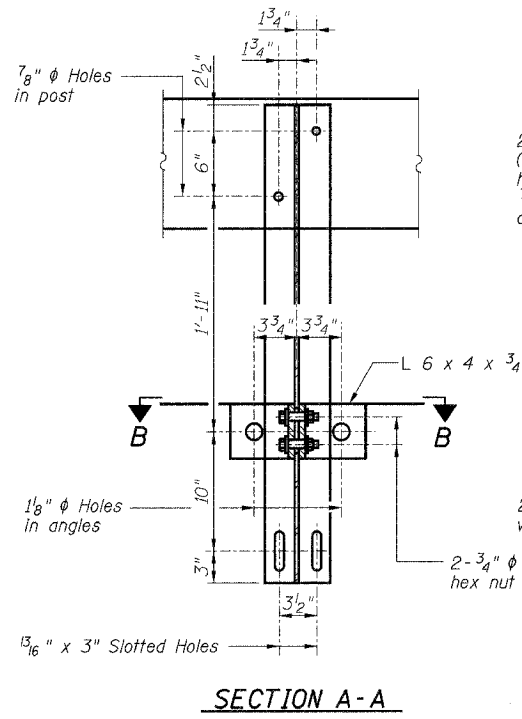
The 3/4 inch high strength bolts used to connect the 6 x 4 x 3/4 angles to the post shall be tightened in accordance with Article 505.04(F)(2) of the Standard Specifications. The 1 inch High Strength bolts connecting the angles to the concrete shall be tightened to a snug fit and given an additional 1/2 turn. The 5/8 inch cap screws in bottom of the posts shall be tightened to a snug fit only.

The Curled End Section shall be considered incidental to the cost of the "STEEL RAILING, TYPE S1", and no additional compensation will be allowed.

See Sheet 6 for Rail Post Layout.

BILL OF MATERIAL

Item	Unit	Quantity
Steel Railing, Type S1	Foot	82



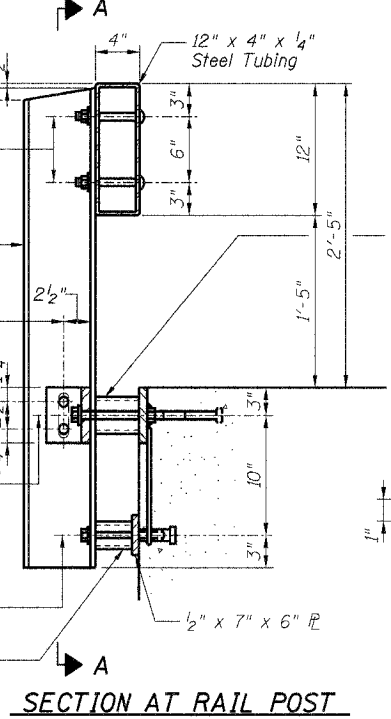
2-3/4" ϕ x 6" Round Head Bolts (With slot or approved recess in head) with locknut & flat washer. 7/8" ϕ Holes in tubing may be drilled in the field.

2-1" ϕ x 7 3/4" H.S. Bolts with flat washer

2-3/4" ϕ x 3 1/4" H.S. Bolts with hex nut & flat washers

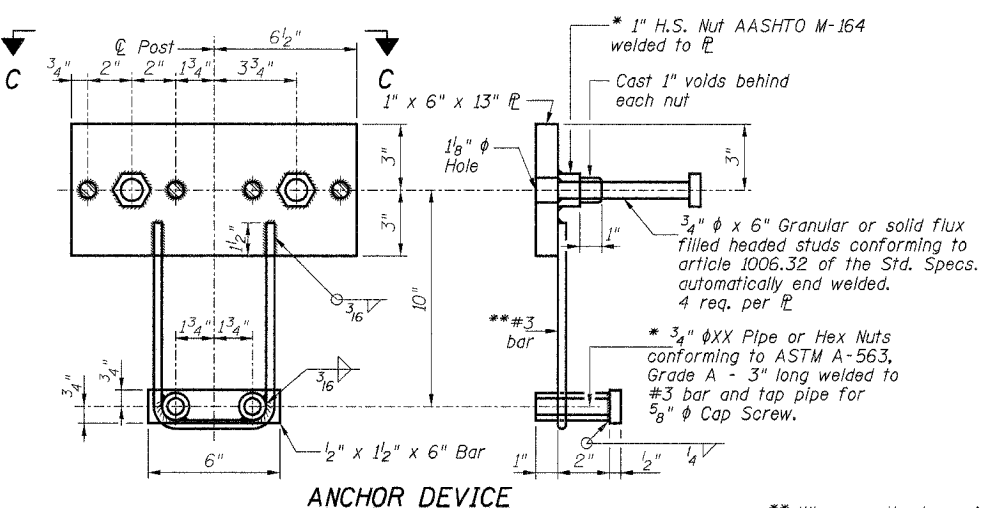
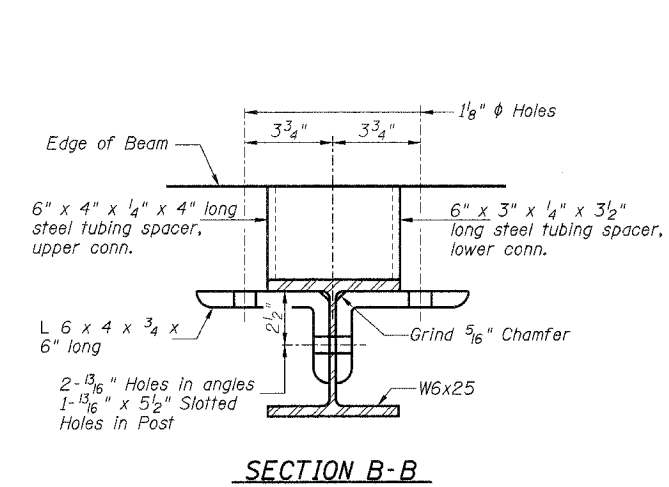
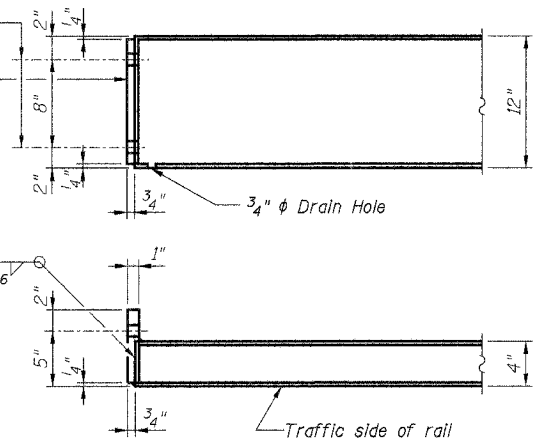
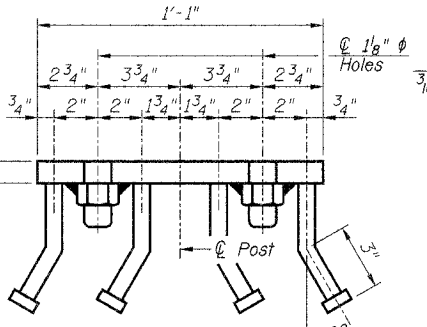
2-5/8" ϕ x 5 3/4" Cap Screws with flat washer

6" x 3" x 1/4" x 3 1/2" long steel tubing, tack weld to post & plate



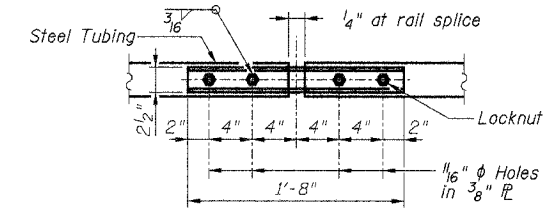
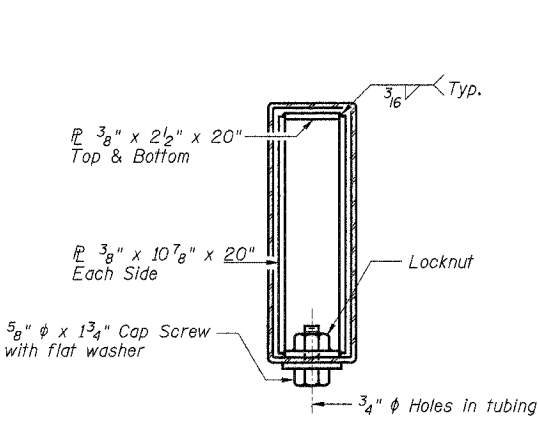
1 1/8" ϕ Holes for 1" ϕ x 4" Round Head Bolts. Provide 2 flat washers & locknuts for guard rail connection shown on Std. 631026.

6" x 4" x 1/4" x 4" long steel tubing, tack weld to post



* Threaded areas shall be plugged or blocked off during casting of beam.

** Whenever the lower insert assemblies interfere with strand locations, the #3 bars shall be cut and adjusted in order to allow raising or lowering of the lower inserts. Maximum adjustment not to exceed 1/2 inch.



**STEEL RAILING, TYPE S1
PROPOSED BRIDGE OVER
NORTH FORK CREEK**

TR 571B
SECTION 00-07125-00-BR
FAYETTE COUNTY, ILLINOIS

08/12/2005