

CURVE INFORMATION
 P.I. STA. 48+27.8
 $\Delta = 0'-50'$
 $D = 0'-08'$
 $R = 42971.84'$
 $T = 312.8'$
 $L = 625.1'$

DONALD BIEHL FARMS
 13-22.0-400-004
 5420 SCHMIDT LANE
 BELLEVILLE, IL 62220
 119.94 ACRE

STA. 51+85.80
 PROPOSED THREE SPAN (40'-60'-40') PRECAST
 PRESTRESSED CONCRETE DECK BEAMS ON REINFORCED
 CONCRETE CAPS WITH HP 12x53 STEEL PILES. 0° SKEW.
 141.50' BK-BK ABUTS ALONG Q STRUCTURE. SEE STAGE
 CONSTRUCTION SHEET.

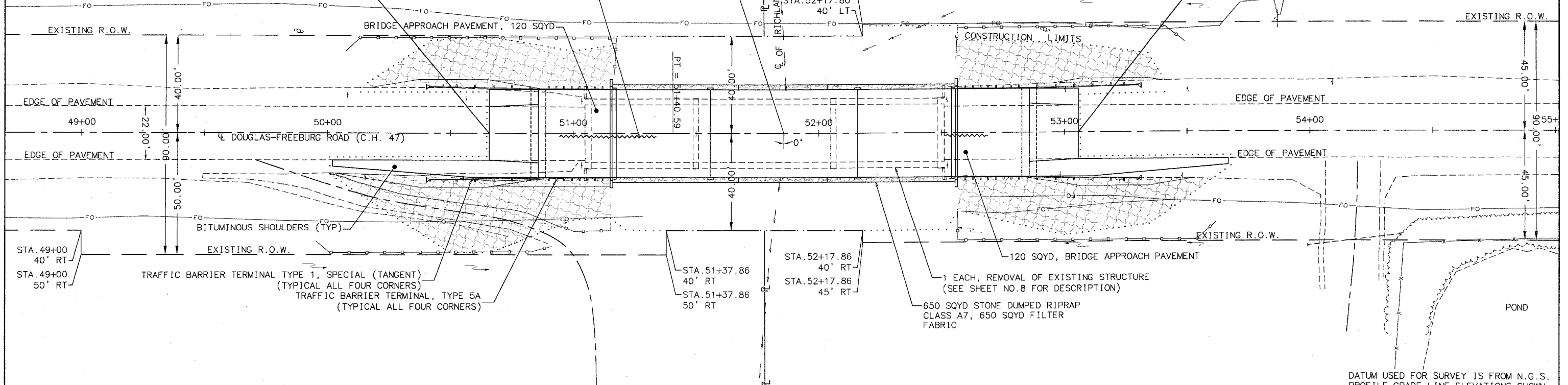
LARRY M. & BEVERLY EITZENHEFER
 13-23.0-300-008
 2 NORTH WEST STREET
 FREEBURG, IL 62243
 15.52 ACRE

SECTION NO.	COUNTY HIGHWAY	COUNTY	SHEET OF SHEETS
00-00196-08-BR	47	ST. CLAIR	4 OF 18
FHWA REG. NO. x	ILLINOIS	FEDERAL AID PROJECT	CONTRACT 97257

BEGIN SECTION 00-00196-08-BR
 STA. 50+65.78

SEE TEMPORARY SHEET
 PILING DETAIL ON PAGE 3

END SECTION 00-00196-08-BR
 STA. 53+05.78



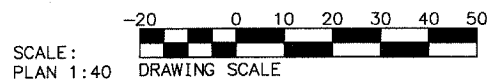
LEGEND

- - - - - TIMBER LINE
- - - - - FENCE LINE
- ⊙ POWER POLE
- - - - - BURIED FIBER OPTIC LINE
- - - - - EXISTING CULVERT
- - - - - EXISTING SIGN
- - - - - PERIMETER EROSION BARRIER
- - - - - TEMPORARY SHEET PILING
- - - - - EROSION CONTROL BLANKET

DONALD E. & MARYANN A. BIEHL
 13-27.0-200-003
 5420 SCHMIDT LANE
 BELLEVILLE, IL 62220
 19.28 ACRE

KRAFT LARRY TRUSTEE
 13-26.0-100-001
 4957 QUIRIN ROAD
 SMITHTON, IL 62285
 63.2 ACRE

DATUM USED FOR SURVEY IS FROM N.G.S.
 PROFILE GRADE LINE ELEVATIONS SHOWN
 REFER TO THE CROWN ELEVATION OF THE
 FINISHED SURFACE.

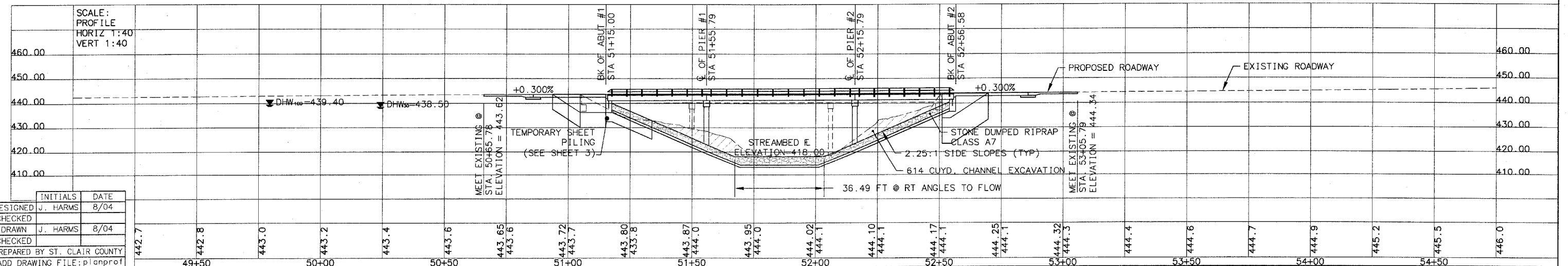


BENCHMARK: FOUND CHISELED SQUARE
 TOP OF S.W. WINGWALL ELEVATION = 443.52 FT.

PERIMETER EROSION BARRIER			
STA. 50+07.50 - STA. 51+17.50	LT	120	FT
STA. 49+95.40 - STA. 51+15.30	RT	127	FT
STA. 52+56.60 - STA. 53+49.10	LT	108	FT
STA. 52+56.50 - STA. 53+62.40	RT	120	FT
TOTAL		475	FT

PERMANENT SURVEY MARKERS, TYPE 1,
 SHALL BE PLACED AT THE FOLLOWING
 LOCATIONS: STA 51+15.42
 STA 52+56.17

PAVEMENT REMOVAL		
STA. 50+65.78 - STA. 51+04.80	95.4	SQ YD
STA. 52+51.10 - STA. 53+05.78	133.7	SQ YD
TOTAL	229	SQ YD



INITIALS	DATE
DESIGNED J. HARMS	8/04
CHECKED J. HARMS	8/04
DRAWN J. HARMS	8/04
CHECKED	
PREPARED BY ST. CLAIR COUNTY	
CADD DRAWING FILE: planprof	