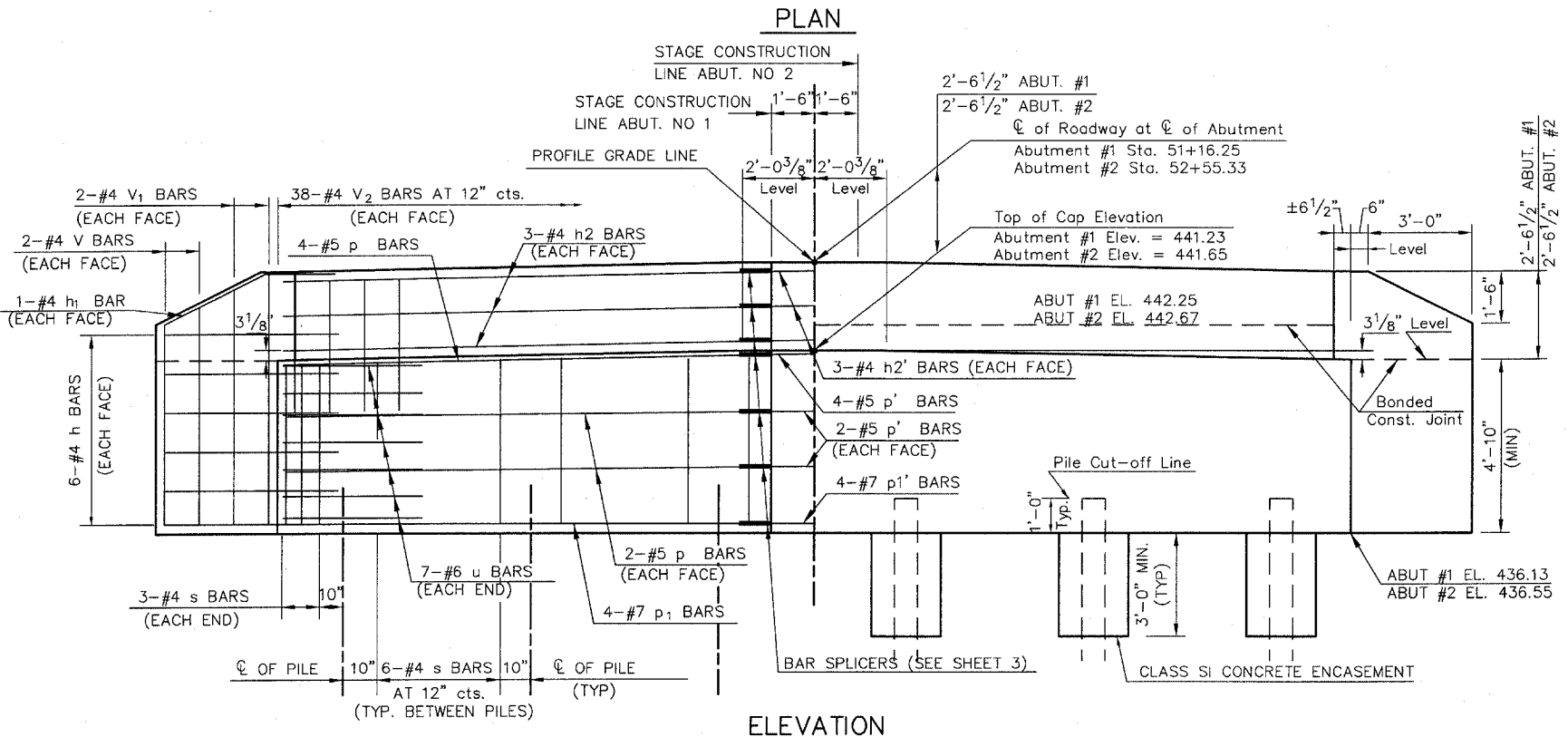
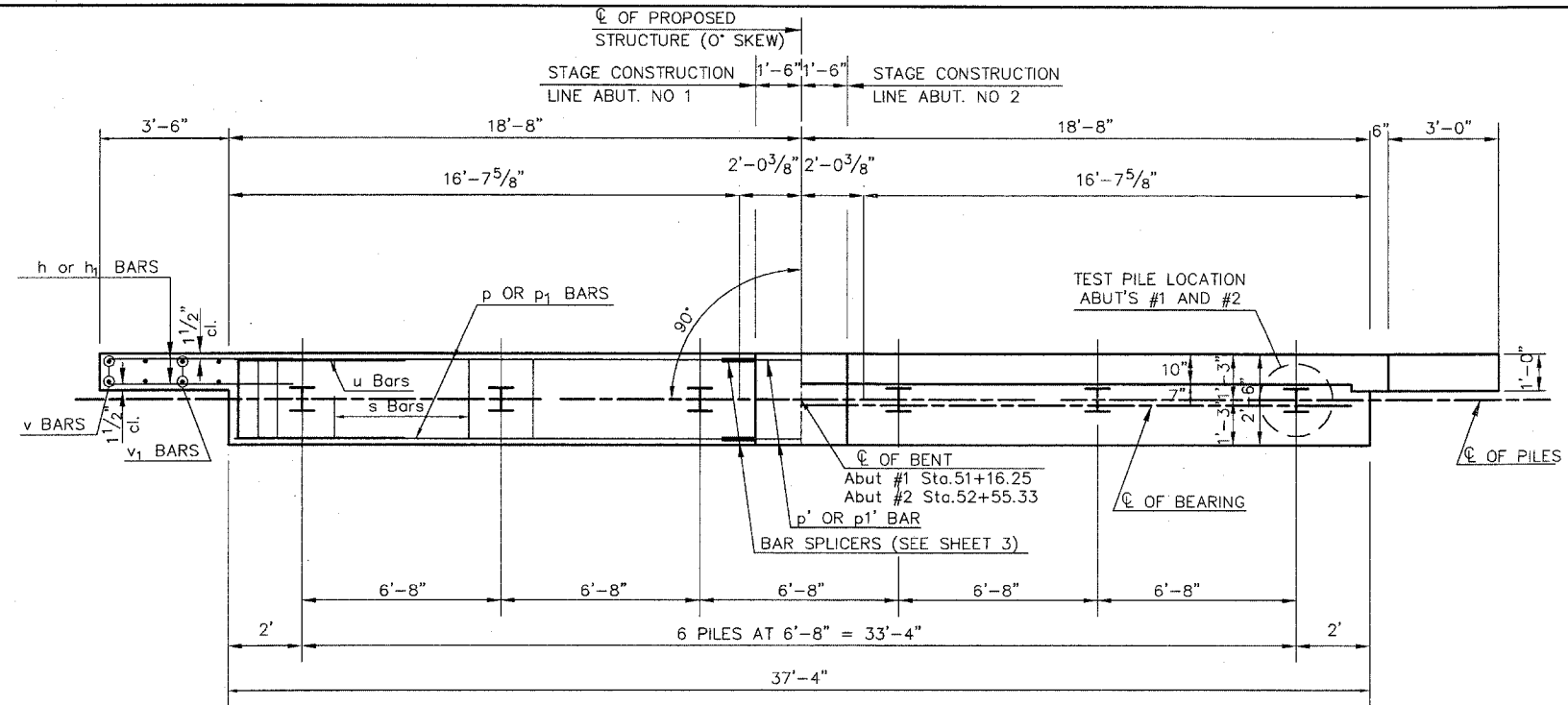


SECTION NO.	COUNTY HIGHWAY	COUNTY	SHEET OF SHEETS
00-00196-08-BR	47	ST. CLAIR	12 OF 18
FHWA REG.NO.7	ILLINOIS	FEDERAL AID PROJECT	
CONTRACT 97257			



NOTES

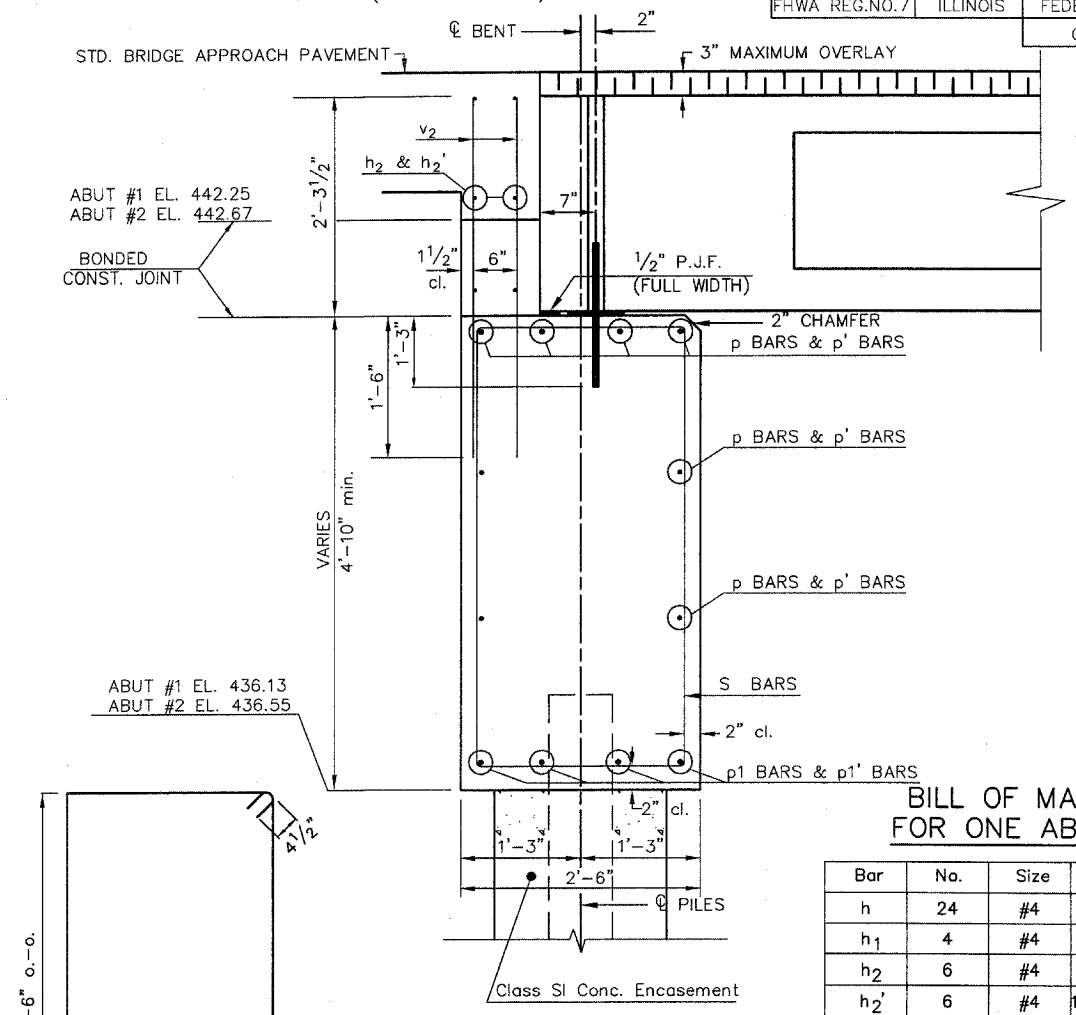
1. THE BACKWALL AND THE PORTION OF THE WINGWALLS ABOVE THE BONDED CONSTRUCTION JOINT SHALL BE CAST AGAINST THE IN-PLACE BEAM.
2. REINFORCEMENT BARS SHALL CONFORM TO A.A.S.H.T.O. M-31, M-42 or M-53. GRADE 60.
3. ALL REINFORCEMENT BARS SHOWN SHALL BE EPOXY COATED
3. SEE SHEETS 5 & 6 FOR STAGE CONSTRUCTION DETAILS.

PILE DATA (2-ABUTMENTS)

TYPE: HP 12x53 (W/ METAL SHOES)
 CAPACITY: DRIVEN TO REFUSAL
 ESTIMATED LENGTH: 104 FT (ABUTMENT #1)
 107 FT (ABUTMENT #2)
 NUMBER REQUIRED: 18 (INCLUDES TWO TEST PILES TO BE DRIVEN AT THE LOCATION SHOWN ON THE PLANS)

SECTION THRU ABUTMENT

(AT RIGHT ANGLES)



BILL OF MATERIAL FOR ONE ABUTMENT

Bar	No.	Size	Length	Shape
h	24	#4	5'-0"	—
h1	4	#4	5'-3"	—
h2	6	#4	16'-9 1/2"	—
h2'	6	#4	19'-10 1/2"	—
p	8	#5	16'-9 1/2"	—
p'	8	#5	19'-10 1/2"	—
p1	4	#7	16'-9 1/2"	—
p1'	4	#7	19'-10 1/2"	—
s	36	#4	14'-1"	□
u	14	#6	11'-1"	□
v	8	#4	3'-2"	—
v1	8	#4	4'-2"	—
v2	76	#4	3'-11"	—

QUANTITIES FOR ONE ABUTMENT

CONCRETE STRUCTURES	20.2 CU YD
REINFORCEMENT BARS,EPOXY COATED	1657 LBS
CONCRETE ENCASUREMENT	2.0 CU YD
METAL SHOES	5 EACH
BAR SPLICERS	18 EACH

**P.P.C. DECK BEAMS
 PILE BENT ABUTMENT**
 36' RDWY. 27" BMS.
 0° SKEW

	INITIALS	DATE
DESIGNED	JLH	10/04
CHECKED	-	-
DRAWN	JLH	10/04
CHECKED	-	-

DESIGN STRESS
 f'c = 3500 psi
 fy = 60000 psi

MAXIMUM PILE LOAD
 40' SPAN = 29 TONS
 60' SPAN = 42 TONS

PREPARED BY ST. CLAIR COUNTY
 CADD DRAWING FILE: ABUTMENT