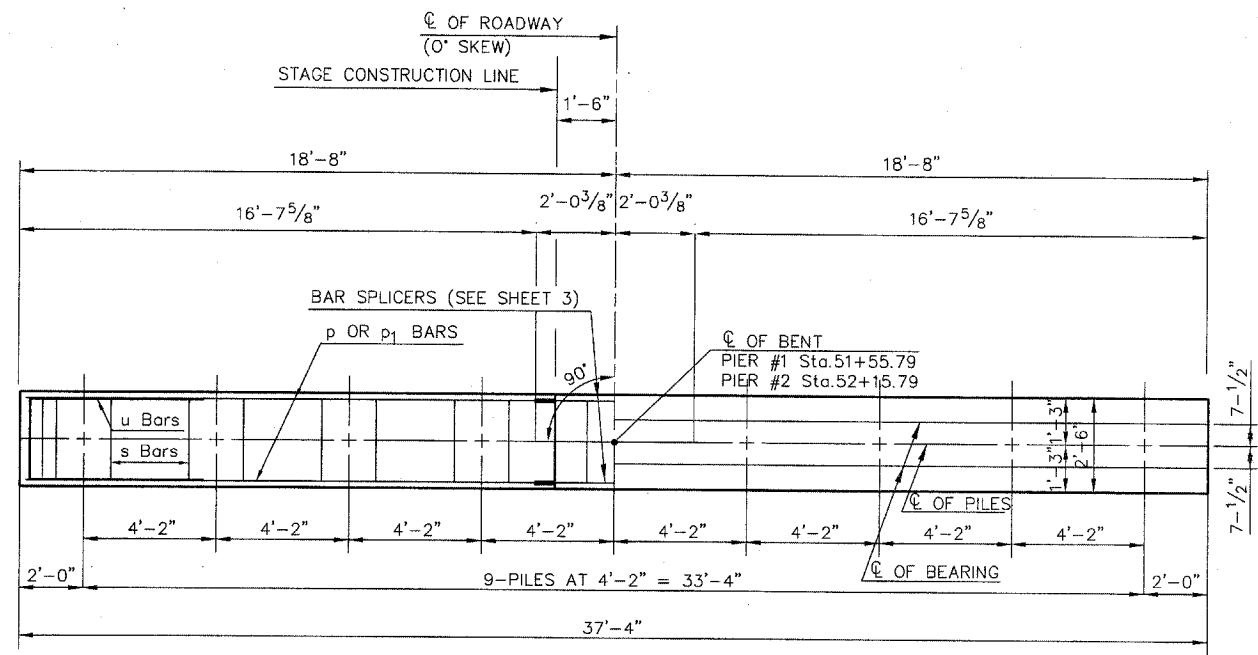
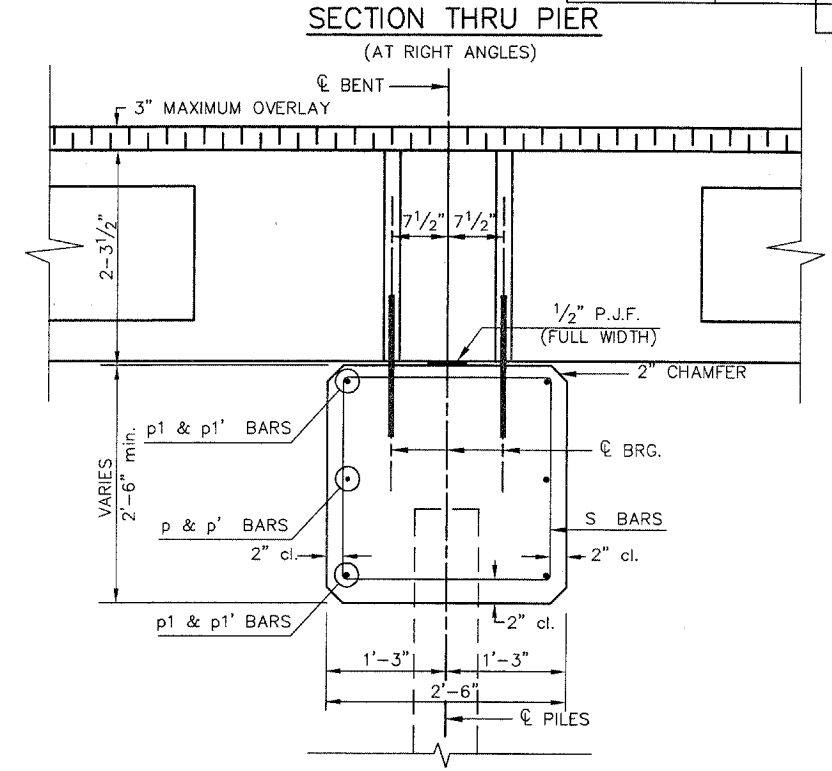


SECTION NO.	COUNTY HIGHWAY	COUNTY	SHEET OF SHEETS
00-00196-08-BR	47	ST. CLAIR	13 OF 18
FHWA REG.NO.7	ILLINOIS	FEDERAL AID PROJECT	
CONTRACT 97257			

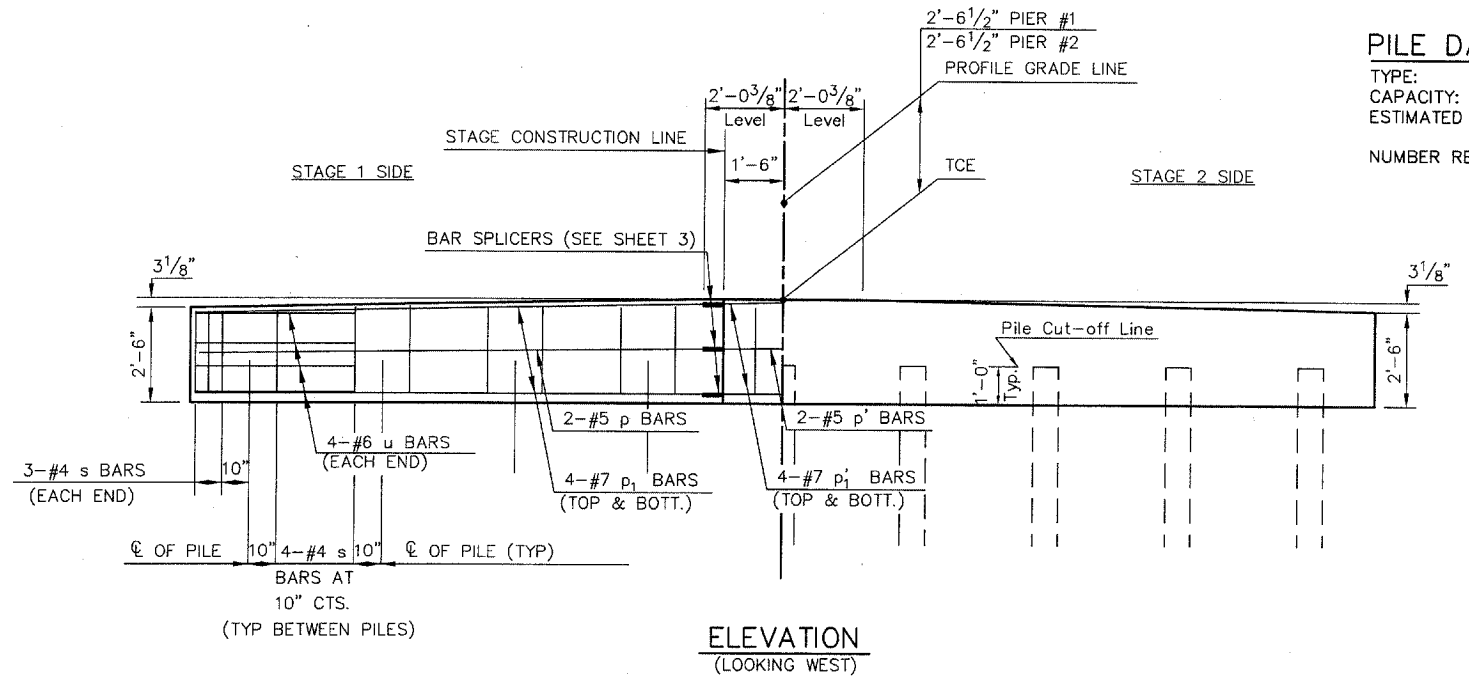


PLAN  
(0° SKEW)

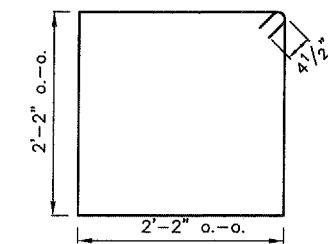


PILE DATA (2-PIERS)

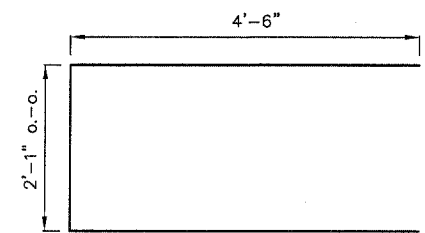
TYPE: HP 12x53 (W/ METAL SHOES)  
 CAPACITY: DRIVEN TO REFUSAL  
 ESTIMATED LENGTH: 108 FT (PIER #1)  
 108 FT (PIER #2)  
 NUMBER REQUIRED: 18 EACH



ELEVATION  
(LOOKING WEST)



BAR s



BAR u

BILL OF MATERIAL FOR ONE PIER

Bar	No.	Size	Length	Shape
p	2	#5	16'-9 1/2"	—
p'	2	#5	19'-10 1/2"	—
p <sub>1</sub>	4	#7	16'-9 1/2"	—
p' <sub>1</sub>	4	#7	19'-10 1/2"	—
s	38	#4	9'-5"	□
u	8	#6	11'-1"	▭
CONCRETE STRUCTURES			9.1 CU YDS	
REINFORCEMENT BARS			748 LBS	
BAR SPLICERS			6 EACH	

MAXIMUM PILE LOADS

SPAN	TONS
40'	32
50'	37
60'	42

DESIGN STRESS  
 f'<sub>c</sub> = 3500 psi  
 f<sub>y</sub> = 60000 psi

NOTE  
 REINFORCEMENT BARS SHALL CONFORM TO  
 A.A.S.H.T.O. M-31, M-42 OR M-53. GRADE 60.

	INITIALS	DATE
DESIGNED	JLH	10/04
CHECKED	-	-
DRAWN	JLH	10/04
CHECKED	-	-
PREPARED BY ST. CLAIR COUNTY		
CADD DRAWING FILE: PIER		

P.P.C. DECK BEAMS  
 PILE BENT PIER  
 36' RDWY. 27" BMS.  
 0° SKEW